

The background of the entire image is a vibrant sunburst pattern with numerous rays in various colors including red, orange, yellow, green, and purple, radiating from the center. Overlaid on this is a large, black, cloud-like shape with a thick yellow dashed border. Inside this shape, the text 'SOUTHEND' is written in a bold, yellow, sans-serif font, and 'FESTIVAL' is written below it in a bold, white, sans-serif font. Below the main title, the words 'Media and Creative Arts' are written in a smaller, white, sans-serif font, positioned above a white horizontal bar that is slightly angled upwards from left to right. To the right of the text, there is a white circle and a white crosshair symbol.

# **SOUTHEND FESTIVAL**

Media and Creative Arts

**facebook/southendfestival**  
**twitter/@SouthendFest**

Saturday 31 May

# Southend Festival

to Monday 30 June 2014

**Southend is a hub for talent in the media and creative arts and Southend Festival has worked with the community and South Essex College for 12 years to provide a platform on which the talent can perform and exhibit.**

Southend Festival runs for the month of June and this year kicks off with an event showcasing a taste of things to come throughout June. (See page 10)

Photography-on-Sea competition has already been extremely popular and an exhibition can be seen at the Royals Shopping Centre from mid May. Look out for postcards around town featuring the winning photography. Also be inspired by Poetry of Southend and get involved yourself by penning your own poem, they could feature on our poet-trees at Vintage-on-Sea and other events. Pick up one of the poetry cards around Southend.

Take a look through this brochure to find music, arts, comedy, media, performance, exhibitions brought to you by fresh new talent and more experienced artist/performers. Southend Festival has also supported two events with grants this year helping them to create an event especially for you.

**Details and updates can be found on our Facebook page**  
**facebook/southendfestival**

Partners of Southend Festival 2014



Art

April

**David Mabb's solo exhibition 'Announcer'**

to July

Focal Point Gallery,  
The Forum,  
Southend-on-Sea, SS1 1NB

**Mon to Fri 8am to 10pm**

**Sat 8am to 6pm**

**Sun 11am to 5pm**

**FREE**

'Announcer' will be launched with a opening event in the gallery on Saturday 12 April, 6pm to 8pm.

Art

Throughout June

**PHAB Bird Boxes**

Various

**FREE**

PHAB are one of the winners of the Southend Festival Community Grant Awards. This has allowed PHAB to work with children to create beautifully decorated bird boxes and bug houses which will be displayed at the Southend Festival Vintage-on-Sea Festival, Sat 21 June, Warrior Square.

Art

Sat 31 May

**Focal Point Gallery Family Workshops**

Focal Point Gallery, The Forum,  
Southend-on-Sea, SS1 1NB

**Morning Sessions**

10.30am to 11.30am & 11.30am to 12.30pm

**Afternoon Sessions**

1.30pm to 2.30pm & 2.30pm to 3.30pm

**FREE**

**Booking Details:**

These are drop-in workshops – book your activities on the day in person, Focal Point Gallery will be open from 10am.

**Jess White, Useless Objects.**

*Focal Point Gallery Foyer, The Forum, Secondary Entrance.*

Artist Jess White will help you make tools from cardboard, considering the function and non-function of objects. Decorate your constructions resulting from explorations made in reference to Simon Martin's offsite project, Hammer House.

**Alan Hockett, Pattern and Print.**

*Focal Point Gallery, Foyer.*

Artist Alan Hockett will lead a workshop that will explore the graphic and illustrative themes in David Mabb's exhibition 'Announcer'. Using linoblock and other printmaking methods, you will create a family artwork with a contemporary take on William Morris designs to take home with you.

**Damien Robinson, Print and Dispatch.**

*Focal Point Gallery Project Space and Atrium, The Forum.*

Digital artist and printmaker Damien Robinson will refer to David Mabb's exhibition 'Announcer', as well as the two offsite commissions to introduce you to the exciting and versatile skills of printing, using screens and other methods.

**Southend Junior PHAB**

**facebook.com/southendjuniorphab**

A unique youth club for kids with and without disabilities to come together on equal terms.



## Art & Design

Tue 10 June

### Twelve PART 1 BA Graphic Design Year 3 End of Year Show

to Mon 16 June

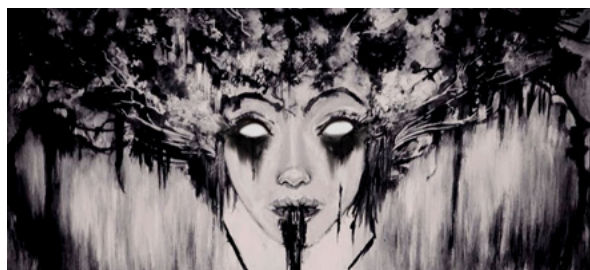
South Essex College,  
Southend Campus,  
Campus Gallery, Floor 1

Fri 8am to 6pm  
Tue to Thu 8am to 9.30pm

**FREE**

This is the show of South Essex College's 2014 graduating class of BA (Hons) Graphic Design. Twelve showcases the final major projects of our twelve students and shows an insight into their interpretation of the varied world of Graphic Design.

THE GRADUATE SHOW  
**TWELVE**



## Art & Design

Fri 13 June

### Art and Design end of year show levels 1 - 3

to Wed 18 June

South Essex College,  
Southend Campus,  
Atrium Café,  
Campus Gallery, Floor 1,  
Art and Design Studios  
levels 5 and 6

10am to 4pm  
**Closed Sun 15th**

**FREE**

**Booking Details:**  
For information please contact the team  
administrators on 01702 220619

The studios of Art and Design will transform into a vibrant environment where students across levels 1 - 3 will be presenting their Final Major Project work. The Following courses will be represented; L1 Art and Design, L2 Art and Design, L3 Fine Art, Photography, General Art and Design, 3D design, Graphic Design, Fashion Promotion and Access to Higher Education.

## Art & Design

Sat 14 June

### Foundation Diploma in Art and Design end of year show

to Wed 18 June

Royals Shopping Centre,  
Southend-on-Sea

10am to 4pm

**FREE**

**Booking Details:**  
For information please contact the team  
administrators on 01702 220619

Foundation Art and Design (L4) presents: 'Demarcation', an eclectic, dynamic and experimental showcase exploring the infinite possibilities of the creative process.



# Degree Courses...

## Opening the Doors of Opportunity

**Tuition fees amongst  
the lowest in the country**

**Less than one hour away  
from London**

**Access to the Forum  
Southend-on-Sea, an  
ultra-modern library and  
learning zone**

**Degree programmes validated  
by the University of Essex**

[www.southessex.ac.uk](http://www.southessex.ac.uk)  
**0845 52 12345**



### Music Performance, Production & Composition BA (Hons)

"This is by far the best vocational degree that I have ever come across. The course prepares students for successful careers in the industry because it's not just about performance and not just about production - it's an excellent balance of them both."



## Art & Design

Mon 16 June

### Level 3 Fashion Show

South Essex College,  
Studio Theatre,  
Luker Road,  
Southend-on-Sea, Essex

7.45pm

**FREE**

For further details:  
contact the team administrators on  
01702 220619

L3 Fashion students will be  
exhibiting their FMP responses  
in the form of a Fashion Show  
held on site at the College.  
Please note this is a ticketed  
event.



## Art & Design

Wed 2 July

### Twelve PART 2 BA Graphic Design Year 3 End of Year Show

to Sat 5 July

New Designers,  
The Exhibition for  
Emerging Design,  
Business Design Centre,  
London N1 0QH

10am to 8pm

**£10.50**

Prices vary, cheapest advance  
booking £10.50 for standard  
day ticket.

**Booking Details:**  
For details of visiting please see:  
[www.newdesigners.com/page.cfm](http://www.newdesigners.com/page.cfm)

New Designers is arguably the  
most important design event  
in the UK for ensuring the life  
cycle of the design industry  
continues and thrives. The  
careers and fresh thinking it  
generates and delivers year  
on year is hard matched  
elsewhere, and the breadth,  
diversity and calibre of visitors  
out ranks any other emerging  
design event.

## Art & Design

Wed 2 July

### New Designers 2014 BA (Hons) Interior Design Year 3

to Sat 5 July

Business Design Centre  
Islington

10am to 4pm

**£14.50**

**Booking Details:**  
contact the team administrators on  
01702 220619

New Designers is the UK's  
most important graduate  
design exhibition, full of  
innovation and fresh thinking.  
It takes place over two weeks,  
with each part focusing on  
a different set of design  
disciplines and featuring its  
own Awards Programme.  
The show sees over 3,000  
of the most talented, newly  
graduated designers from  
the UK's leading universities  
come together to exhibit in  
one spectacular venue - the  
Business Design Centre,  
London.



## Art & Design

Wed 2 July

### New Designers 2014 BA (Hons) Graphic Design Year 3

to Sat 5 July

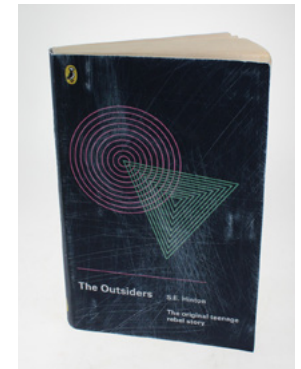
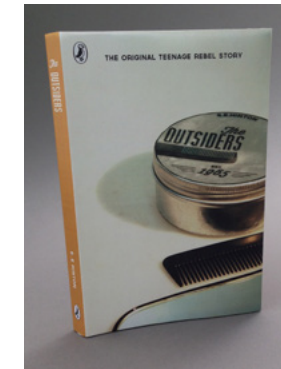
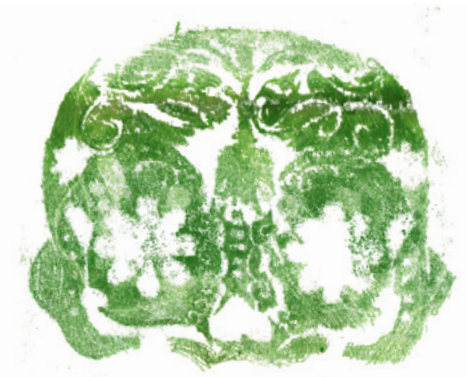
Business Design Centre  
Islington

10am to 4pm

**£14.50**

**Booking Details:**  
contact the team administrators on  
01702 220619

New Designers is the UK's  
most important graduate  
design exhibition, full of  
innovation and fresh thinking.  
It takes place over two weeks,  
with each Part focusing on  
a different set of design  
disciplines and featuring its  
own Awards Programme.  
The show sees over 3,000  
of the most talented, newly  
graduated designers from  
the UK's leading universities  
come together to exhibit in  
one spectacular venue - the  
Business Design Centre,  
London.



## Comedy

Mon 2 June

### Edinburgh Fringe Previews

to Sat 7 June

Dixon Studio,  
Palace Theatre,  
London Road,  
Westcliff-on-Sea

8pm

**£6.00\***

\*£1.50 per ticket booking fee applies, capped at 4 tickets

**Booking Details:**  
[www.southendtheatres.org.uk](http://www.southendtheatres.org.uk)

Enjoy an evening of experimental comedy as these hilarious comedians hone their acts in preparation of the Edinburgh Festival. Visit [palacetheatresouthend.co.uk](http://palacetheatresouthend.co.uk) for line-up.



## Comedy

Tue 3 June

### Grumpy Old Women 'Fifty Shades of Beige'

Palace Theatre,  
London Road,  
Westcliff-on-Sea

8pm

**£21.00\***

\*£1.50 per ticket booking fee applies, capped at 4 tickets

**Booking Details:**  
[www.southendtheatres.org.uk](http://www.southendtheatres.org.uk)

The Grumpies are back to knock some sense into the nation. Comedian, writer and original star of Grumpy Old Women Jenny Éclair will be joined by fellow recruits Susie Blake (Mrs Brown's Boys, Coronation Street) and actress and singer Kate Robbins (Where The Heart Is, Casualty) in this brand-spanking new show. This jam-packed evening includes learning the art of 'Grumpy Grooming', the joy of large pants, a free nagging master class, beards for women, which style will suit you? All this and more!

## Comedy

Sun 8 June

### Edinburgh Preview show with James Acaster and Stu Goldsmith

over 18's only

The Alex Public House,  
Alexander Road,  
Southend-on-Sea

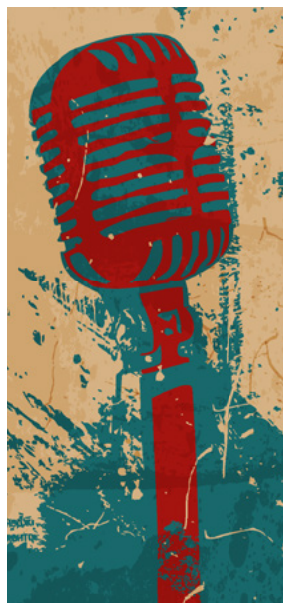
8pm

**£6\***

\*plus 60p booking fee

**Booking Details:**  
[www.wegotickets.com](http://www.wegotickets.com)  
more details on  
[www.jokeclub.co.uk](http://www.jokeclub.co.uk)

The Joker club presents James Acaster and Stu Goldsmith as they warm up before the Edinburgh Comedy Festival.



## Comedy

Sun 22 June

### Edinburgh Preview show with Carl Donnelly and Angela Barnes

over 18's only

The Alex Public House,  
Alexander Road,  
Southend-on-Sea

8pm

**£6\***

\*plus 60p booking fee

**Booking Details:**  
[www.wegotickets.com](http://www.wegotickets.com)  
more details on  
[www.jokeclub.co.uk](http://www.jokeclub.co.uk)

The Joker club presents Carl Donnelly and Angela Barnes as they warm up before the Edinburgh Comedy Festival.



## Comedy

Thu 26 June

### Edinburgh preview show with Joel Dommett and Chris Martin

over 18's only

The Alex Public House,  
Alexander Road,  
Southend-on-Sea

8pm

**£5\***

\*plus 50p booking fee

**Booking Details:**  
[www.wegotickets.com](http://www.wegotickets.com)  
more details on  
[www.jokeclub.co.uk](http://www.jokeclub.co.uk)

The Joker club presents Joel Dommett and Chris Martin as they warm up before the Edinburgh Comedy Festival.

## Comedy

Sun 29 June

### Edinburgh preview show with Zoe Lyons and Gordon Southern

over 18's only

The Alex Public House,  
Alexander Road,  
Southend-on-Sea

8pm

**£5\***

\*plus 50p booking fee

**Booking Details:**  
[www.wegotickets.com](http://www.wegotickets.com)  
more details on  
[www.jokeclub.co.uk](http://www.jokeclub.co.uk)

The Joker club presents Zoe Lyons and Gordon Southern as they warm up before the Edinburgh Comedy Festival.





Sat 31 May

## Southend Festival Opening Event

High Street/The Forum, Southend-on-Sea, 12pm to 4pm

**FREE**

A fun event for all of the family, come and see what Southend Festival can offer you. Interact with the characters and have your picture taken at the Mad Hatters Tea Party. Meet Bandersnatch, bird and pig puppets. Enjoy acoustic performances, take part in a costume workshop, art wall, storytelling, drop-in to The Focal Point Gallery for a Family Workshop. And if that is not enough, get in character and have your face painted by South Essex College Media Make-up students.

Meet the Bandersnatch and friends at the Festival Opening Event...



Sat 31 May

## Southend Festival Afternoon Tea

Park Inn Palace Hotel, Southend-on-Sea, 12pm to 3pm

**£35 for 2**

Booking Details:

Call the events office on **01702 455 155** or email [meetings.southend-on-sea@rezidorparkinn.com](mailto:meetings.southend-on-sea@rezidorparkinn.com)

Enjoy a traditional afternoon tea as part of the Southend Festival Mad Hatters Tea Party Opening Event at the Park Inn Palace Hotel, it's worth a treat.

...Or join us for tea, but don't be late!



photography by Nick Halling





## Community

Thu 15th May

### Photography-on-Sea

to Fri 30 May

The Royals Shopping Centre  
Southend-on-Sea

**FREE**

This competition has been running since February and we've been overwhelmed with the number of entries and the quality of the images, all which have been featured on our Facebook page. This exhibition will showcase the winners and some of the entries that have really captured photography-on-sea. Postcards featuring the winners can be found at venues around town.



## Community

Sat 7 June

### Southend Festival Poetry Workshops

The Royals Shopping Centre

10am to 12.30pm and 1.30pm to 3pm

**FREE**

Booking Details:

To book email [events@southessex.ac.uk](mailto:events@southessex.ac.uk) or call: 0854 52 12345 and quote: Southend Festival Poetry Workshop

**These workshops will run with a maximum of 15 people.**

Pick up a poetry card from around town and be inspired by Southend Poetry Group to create your own poem. Share it with Southend Festival fans by returning your card to:

Southend Festival, Marketing Dept. South Essex College, Luker Rd, Southend, SS11ND  
or scan and email it to [southendfestival@southessex.ac.uk](mailto:southendfestival@southessex.ac.uk).

Visit [facebook/southendfestival](https://facebook.com/southendfestival) for full details.

If you are not sure where to start with your poetry come along to the Southend Festival Poetry Workshop and have a helping hand from the Southend Poetry Group. Leave having written your own poem and with the knowledge to keep writing.

## Poetry of Southend



## Vintage-on-Sea

in partnership with  
**Bobby's Girl Vintage**

Vintage, retro and handmade craft fair, live entertainment and workshops

## Community

Sat 21 June

### Vintage-on-Sea

Warrior Square Park, Southend-on-Sea

10.30am to 4.00pm

**FREE**

Bobbys Girl Vintage has been invited to host the Vintage and Retro Market at Southend Festival Community event 'Vintage-on-Sea'. Perfect for Bobbys Girl Vintage followers to get a summer vintage day out and the community of Southend and surrounding areas. You will find live music, dancing, make-overs and an outdoor vintage market on the doorstep of Southend High Street. Bringing you vintage delights from vintage & retro music, fashion, homeware, furniture, accessories, bags and handmade items. There is ample parking very close to the event.

## Dance

Wed 11 June

### IMPULSE BTEC Level 2 Diploma Dance & BTEC Level 3 Dance and Musical Theatre

The Towngate Theatre,  
Basildon

7.30pm

**£12.00**

£10.00 concession (student's,  
children under 12 and OAP's)

**Booking Details:**  
The Towngate Theatre Box Office  
01268 465465

Dance and Musical Theatre students have come together to perform a range of dance styles such as; ballet, tap, contemporary, jazz, urban and musical theatre. The show is a culmination of the skills the students have developed during their course. Students have also choreographed their own routines which will also be showcased.



## Film

Tue 17 June

### All is Lost

Certificate '12'

Leigh Community Centre,  
Leigh-on-Sea, SS9 1SP

7.30pm

**£6.00**

**Booking Details:**  
Tickets are available in advance from  
Leigh Community Centre  
by calling 01702 477248  
or on the door.

Academy Award winner  
Robert Redford stars in this  
tense open-water thriller  
about one man's battle for  
survival against the elements.  
Written and directed by  
Academy Award nominee J.C.  
Chandler (Margin Call) the  
film is a gripping, visceral and  
powerfully moving tribute to  
ingenuity and resilience.



## Film

Sun 22 June

### Philomena

Certificate '12'

The Palace Theatre,  
London Road,  
Westcliff-on-Sea

7.30pm

**£6.00**

**Booking Details:**  
Tickets available in advance from  
[www.southendtheatres.org.uk](http://www.southendtheatres.org.uk)  
by calling 01702 351135  
or on the door.

Starring Judi Dench and Steve  
Coogan, this is a compelling  
narrative of human love and  
loss that ultimately celebrates  
life, showing that there is  
laughter even in the darkest  
places.

## Film & technology

Sat 14 June

### Southend and Essex from above

The POD,  
South Essex College,  
Southend Campus,  
Luker Road, Southend-on-Sea

3pm

**FREE**

David Black is a local Aerial  
Videographer who utilises  
remotely piloted multi-rotors  
to capture amazing videos  
of local sites. David will  
demonstrate the technology,  
filming and editing techniques  
as well as showcasing his  
extensive portfolio of aerial  
videos. Attendees will enter a  
free draw to win a hexacopter  
of their own.

## Media

Wed 11 June

### The Future of Media Production South Essex College Further Education End of Year Show

Thu 12 June

The Park Inn Palace Hotel, Southend-on-Sea

10am to 4pm

**FREE**





## Music

Fri 6 June

### Fisticuffs

The Sutton Arms  
Southchurch Road  
Southend-on-Sea, SS1 2NL

9.30pm

**FREE**

New Wave Revival Band.

## Music

Fri 6 June

### David Livings - Live

The Squeeze Café  
Leigh-on-Sea, SS9 2HB

8pm

**FREE**

## Music

Sat 7 June

### Junkyard Aliens

The Sutton Arms  
Southchurch Road  
Southend-on-Sea, SS1 2NL

9.30pm

**FREE**

Rock Covers Band.

## Music

Sun 8 June

### Chelmsford Silver Band

Southend Bandstand,  
Priory Park,  
Victoria Avenue,  
Southend-on-Sea, SS2 6NB

3pm to 5pm

**FREE**

**Booking Details:**  
From Visitors Information Centre or  
01702 215011

The excellent Chelmsford Silver Band will perform an afternoon of traditional brass music favourites.



## Music

Wed 11 June

### Lunchtime Recital

Civic Centre,  
Victoria Avenue,  
Southend-on-Sea, SS2 6ER

12.15pm to 1pm

**FREE**

**Booking Details:**  
From Visitors' Information Centre or  
01702 215011

A forty five minute programme of chamber music performed by an excellent Piano Quintet. Free admission with retiring collection.

## Music

Fri 13 June

### Beggar

The Sutton Arms  
Southchurch Road  
Southend-on-Sea, SS1 2NL

9.30pm

**FREE**

Rock Covers Band.



## Music

Sat 14 June

### The Beagles

The Sutton Arms,  
Southchurch Road,  
Southend-on-Sea, SS1 2NL

9.30pm

**FREE**

Rock Covers Band.

## Music

Sat 14 June

### Belfairs High School Wind Band

Southend Bandstand,  
Priory Park,  
Victoria Avenue,  
Southend-on-Sea, SS2 6NB

3pm to 5pm

**FREE**

**Booking Details:**  
From Visitors' Information Centre or  
01702 215011

An afternoon of music performed by the talented young musicians from Belfairs High School.



## Music

Sat 14 June

### Jazz Juice

The Squeeze Café,  
Leigh-on-Sea, SS9 2HB

8pm

**FREE**

## Music

Sun 15 June

### Saxology

Southend Bandstand,  
Priory Park,  
Victoria Avenue,  
Southend-on-Sea, SS2 6NB

3pm to 5pm

**FREE**

**Booking Details:**  
From Visitors' Information Centre or  
01702 215011

Well known favourite  
numbers performed by  
this excellent professional  
saxophone quartet.

## Music

Fri 20 June

### Southend Council Concert Series - "Red Priest" Baroque Quartet

Plaza Centre, Southchurch Road, Southend-on-Sea, SS1 2PT

8pm

**£10**

£9 concessions. Discounts for members of the Southend  
Council Concert Series

**Booking Details:**  
From Visitors' Information Centre or 01702 215011

A programme of music by Handel and his contemporaries  
performed by the unique and dynamic quartet of Red Priest.  
"Red Priest is like no other early music ensemble"  
- *Daily Telegraph*.



## Music

Fri 20 June

### EXPOSE

The Sutton Arms,  
Southchurch Road,  
Southend-on-Sea, SS1 2NL

9.30pm

**FREE**

Rock Covers Band.

## Music

Fri 20 June

### Matt Linen - Live

The Squeeze Café,  
Leigh-on-Sea, SS9 2HB

8pm

**FREE**

## Music

Sat 21 June

### Harmonie Concert Band

Southend Bandstand,  
Priory Park,  
Victoria Avenue,  
Southend-on-Sea, SS2 6NB

3pm to 5pm

**FREE**

**Booking Details:**  
From Visitors' Information Centre or  
01702 215011

Harmonie Concert band  
perform widely across Essex  
and the South East, and  
delight audiences with their  
wide and varied programme  
of music.

## Music

Sat 21 June

### Ben Procter D.J.

The Squeeze Café,  
Leigh-on-Sea, SS9 2HB

8pm

## Music

Sat 21 June

### The Lucky Strikes present... The Exile & The Sea, packed with very special guests. Grant Winner.

The Dixon Studio,  
The Palace Theatre.  
Westcliff-on-Sea

7.30pm

**£10**

**Booking Details:**  
[www.wegotickets.com](http://www.wegotickets.com)

The Lucky Strikes bring their latest album to the stage, 'The  
Exile & The Sea'. A performance of story-telling with lots of  
special guests.





## Music

Sun 22 June

### Southend Vox

Southend Bandstand,  
Priory Park,  
Victoria Avenue,  
Southend-on-Sea, SS2 6NB

3pm to 5pm

**FREE**

**Booking Details:**  
From Visitors' Information Centre or  
01702 215011

Southend Vox is an exciting and dynamic, adult choir. Their repertoire is wide and varied including show songs, pop classics and spirituals.

## Music

Thu 26 June

### Squeezebox Live Folk and Acoustic

The Squeeze Café  
Leigh-on-Sea, SS9 2HB

7.30pm

**£4.00**

## Music

Thu 26 June

### Leigh Folk Festival

to Sun 29 June

Library Gardens, Squeeze Café, St Clements Church, Leigh Community Centre, Old Leigh High Street, The Crooked Billet, The Clarendon Scout Hut and the Fisherman's Chapel

**FREE**

Mostly free apart from some ticketed events; see website for details

**Booking Details:** [www.leighfolkfestival.com](http://www.leighfolkfestival.com)

The Leigh Folk Festival launches its 23rd event with a 4-day programme of events; some ticketed, but mostly free. Saturday: Library Gardens is taken over with music stages, children's entertainment, beer tents and stalls. Sunday: Leigh Old Town has music stages featuring folk, Americana, spoken word, traditional dances and more!



## Music

Fri 27 June

### Baroness Shirley Williams: Politics and Music in the 20th Century

The Forum,  
Southend-on-Sea

7.30pm to 10.30pm

**£12.00**

**Booking Details:**  
Tickets available from  
[www.theforumsouthend.co.uk/events](http://www.theforumsouthend.co.uk/events)

Baroness Williams, respected politician and academic associate of Harvard university for many years, reflects on how composers in the 20th century refused to hide their political and social convictions.



## Music

Fri 27 June

### Mischief

The Sutton Arms  
Southchurch Road  
Southend-on-Sea, SS1 2NL

9.30pm

**FREE**

Rock Covers Band.

## Music

Sat 28 June

### OUTTASIGHT!

The Squeeze Café  
Leigh-on-Sea, SS9 2HB

8pm

**FREE**

## Music

Sat 28 June

### Riot

The Sutton Arms  
Southchurch Road,  
Southend-on-Sea

9.30pm

**FREE**

Rock Covers Band.

## Performance

Thu 29 May

### The Hunchback of Notre Dame

to Sat 31 May

Clifftown Theatre,  
Nelson Street,  
Southend-on-Sea,  
Essex SS1 1EF

7.30pm

Sat Matinee 2.30pm

**£10.00**

£6.00 concession

**Booking Details:**  
Clifftown Theatre Box Office:  
01702 328335  
www.clifftowntheatre.co.uk

The classic gothic tale of Esmeralda gives the Physical Theatre actors the opportunity to explore all their skills. With the acclaimed director, Gary Sefton, at the helm, returning after the success of last year's 'Gormenghast', this is sure to be a show not to miss!



## Performance

Thu 5 June

### Act Locally

to Sat 7 June

Clifftown Theatre,  
Nelson Street,  
Southend-on-Sea,  
Essex SS1 1EF

Thu 6.30pm

Fri 7.30pm

Sat 2.30pm

**£10.00**

£6.00 concession

**Booking Details:**  
Clifftown Theatre Box Office:  
01702 328335  
www.clifftowntheatre.co.uk

A season of four community plays created with local families, residents of York Rd, and St Christopher's, Westborough and Cecil Jones Schools. Exploring perceptions of routine, of expectations, of family...and tigers!

## Performance

Sat 14 June

### Burlesque Evening

over 18's only

Park Inn Palace Hotel  
Southend-on-Sea

7.00pm

**£50**

**Booking Details:**  
Call the events office on  
01702 455 155  
or email  
meetings.Southend-on-Sea@  
rezidorparkinn.com

Burlesque in the Ballroom, an evening dinner and soiree. Take in the art of Burlesque with dinner at the Park Inn Palace Hotel. The true spirit of the time-honoured art form is revived. . . and given a playful, modern-day tweak for good measure!

## Performance

Sat 14 June

### Nonsuch Theatre: Physical Theatre

Movement Space, Southend Campus, South Essex College,  
Luker Road, Southend-on-Sea, SS1 1ND

10am to 3pm

**£10**

**Booking Details:**  
Please book your place through Nonsuch Theatre's online booking system  
nonsuchtheatre.tictail.com or email them at hello@nonsuchtheatre.com

An introductory session to physical theatre led by Nonsuch Theatre's artistic director Edward Boott. Participants will be lead through a diverse range of International theatre practices that aim to challenge and develop the role of the body as part of the actor's toolkit.



## Performance

Sun 22 June

### FlashmobTM 'Where Dance World's Collide'

to Mon 23 June

Cliffs Pavilion, Station Road,  
Southend-on-Sea

**£26.00\***

\*Under 16's £16.50

Group discounts available  
£1.50 per ticket booking fee  
applies, capped at 4 tickets

**Booking Details:**  
www.thecliffspavilion.co.uk

See the stars of TV dance shows headlined by the spectacular Kevin Clifton (Kevin from Grimsby) and Karen Hauer, from BBC's Strictly Come Dancing, World Street Dance champions Flawless from Britain's Got Talent, as well as Olivier-nominated Tommy Franzen (BBC1 So You Think You Can Dance), contemporary duo Alleviate and Irish fusion duo Brosena from Sky 1's Got To Dance, in a show that offers Latin to Locking, Celtic to contemporary and jazz to jump jive.



The poster features a vibrant background of multi-colored, hand-painted diagonal stripes in shades of red, orange, yellow, green, and purple. In the center, a black, cloud-like shape with a yellow dashed border contains the year '2014' in large, bold, yellow sans-serif font. Below the year, the festival's categories are listed in a smaller, yellow, sans-serif font.

# 2014

Art Comedy Community Dance Design Film Media Music Performance

**facebook/southendfestival**  
**twitter/@SouthendFest**