



# Our qualifications explained

## **HNC – Level 4 and HND – Level 5**

Higher National Certificates (HNC) and Higher National Diplomas (HND) are job-related qualifications. HNCs and HNDs reflect the requirements of professional organisations and meet the National Occupational Standards for each sector or industry. They are an ideal choice for students seeking a cost-effective, vocational pathway to higher education.

## **CertEd – Level 5**

The Certificate in Education (Further Education and Skills Sector) is a Level 5 teaching qualification which has a teaching/training practice requirement.

## **PgCE – Level 6**

The Professional graduate Certificate in Education is a teacher training programme that will gain you a teacher training certificate in the post compulsory sector.

## **BA (Hons) – Level 6**

A Bachelor of Arts, BA (Hons), is a bachelor's degree awarded for an undergraduate course or programme that follows a humanities curriculum.

## **BSc (Hons) – Level 6**

A Bachelor of Science, BSc (Hons), is a bachelor's degree awarded for an undergraduate course or programme in science-based or technical studies.



# Welcome

By choosing to study at this vibrant, modern College you can be assured of receiving a high quality education and an excellent student experience.

Our degrees and higher education qualifications are awarded by leading institutions, including the University of East Anglia, the University of Arts London, The Open University and Pearson.

Our ambition is to provide you with a qualification that equips you with the knowledge and transferable skills to successfully embark on your chosen career path or to continue with further study.

We hope that you enjoy discovering more about South Essex College University Centre and the benefits of studying here, and look forward to seeing you at one of our Higher Education open events in the near future.

Colin Bladen-Kopacz  
**Dean (Higher Education)**



# 10 reasons to study

## at South Essex College University Centre



### 1. Career-focused degrees

Our programmes are designed in partnership with businesses to ensure you're fully prepared for employment. Our tutors have a wealth of industry experience and our College and staff maintain close links with companies in Britain and abroad.



### 2. Quality partnerships mean quality outcomes for our students

Our programmes are accredited by top class institutions giving you the opportunity to study for a qualification that will steer you into the career of your dreams or smooth your progress to further studies.



### 3. More time with your tutor

Our classes are small so you get more personal attention and a more personalised learning experience which maximises your opportunity to achieve great things.



### 4. Flexibility and convenience

Some of our students come straight from sixth form while others have taken a break or spent time in work prior to starting their degree. This means you'll always find people at College just like you and mix with a diversity of people who will enrich your life.



### 5. Technology and resources

Our campuses are full of industry-specific equipment, labs, studios and study areas. You will also benefit from The Forum Southend-on-Sea and the East Wing at Thurrock, each of which has spectacular modern facilities.



## 6. Great opportunities for mature students

Getting back into education when you have a few more years on the clock can be a challenge, but here at South Essex College University Centre we can offer you top class, affordable study near to your home. Previous experience can often be taken into account when applying for higher education courses.



## 7. Saves you money

Our programmes are very competitively priced and you can save up to £10,000 by choosing to study with us.



## 8. Accessibility

Transport links are excellent with all our campuses being very close to bus and railway stations that have direct links to London. At Southend the railway station is less than a minute away from our main reception and the expanding Southend airport, with its international links, is less than three miles away. Thurrock campus is situated a two minute walk from the train station and town centre.



## 9. Earning potential

Undertaking a higher education course with us is an investment in your future. Graduates earn a higher starting salary than non-graduates and can expect their salary to rise at a faster rate. Ten years later, on average, degree-qualified men earn 30% more and women 46% more than non-graduates. (National Careers Service)



## 10. Personal development

Student life is not all about studying, it's also about meeting new people, forming new friendships and making the most of the opportunities that higher education can provide. Studying with us will increase your life experiences by learning new skills and developing new interests, helping you become a more confident and well-rounded adult.

# Our campuses

South Essex College University Centre is proud to offer a wide range of full Honours Degrees, Higher National Certificates & Diplomas (HNCs and HNDs) and teaching qualifications at our centres in Southend and Thurrock.



## **The Forum, Southend-on-Sea**

The Forum Southend-on-Sea is a £27 million ultra-modern library and learning zone located opposite our Southend Campus. It boasts a superbly stocked integrated municipal and academic public library, a modern teaching facility for South Essex College University Centre which supports the delivery of our Higher Education courses, a learning space for the University of Essex, the Focal Point Art Gallery, a 200-seat lecture theatre and refreshment facilities.



## **The Bob and Tamar Manoukian Costume Centre**

Our Costume Construction degree has been set-up in partnership with the Royal Opera House (ROH), and is based at High House Production Park in the Bob and Tamar Manoukian Costume Centre, which is home to ROH's collection of 20,000 costumes and wigs.



## **Thurrock campus**

Our £45 million campus offers you cutting edge services including specialist workshop spaces in the campus' East Building linked to our Construction and Engineering programmes and state-of-the-art studio spaces for our Costume Construction degree.



# Essex

- a great place to study

All of our campuses are close to London, a city that has everything. Fantastic food, unrivalled entertainment with its clubs, theatres, cinemas, pubs, cafes, live music and comedy clubs not forgetting the many museums, galleries and exhibitions.

Essex has an international reputation for its entertainment. With loads of festivals, concerts and events going on throughout the year.



# Southend-on-Sea

Southend is a buzzing seaside town offering an eclectic mix of on-trend entertainment with great pubs, clubs and live music. We have great beaches and green spaces to relax in. The town has recently been awarded a Purple Flag which is a national accreditation that recognises excellence in the management of town and city centres at night. It is the 'gold standard' for night time destinations and entertainment areas. So, we have Blue Flag award-winning beaches, Green Flags for our parks and now a Purple Flag for our night time economy.



## **A convenient place to live**

The Southend campus is located in the heart of Southend High Street, with shops, restaurants and bars barely a stone's throw away. The transport links are excellent with a comprehensive bus network and two major London-bound train lines (including nine rail stations in the borough).

## **Arts and festivals**

There's a strong community of artists in the town with regular shows and exhibitions at galleries such as the Old Waterworks, the Beecroft and the Focal Point Gallery in The Forum Southend-on-Sea which feature visits from international artists.

Southend's theatres, the Cliffs Pavilion and the Palace Theatre, attract major West End touring productions, as well as concerts, ballet, opera and comedy.



There are also various festivals throughout the year including the Southend Film Festival (April), Village Green Festival (July), Leigh Folk Festival (June), and Village Beach Festival (July).





### **Sport and leisure**

Windsurfing, sailing and kite surfing are all on your doorstep, with speedboat racing and a sailing regatta also taking place every year. If hiking along the estuary appeals to you, you will enjoy picturesque Hadleigh Country Park and a range of coastal walks.

For mountain bike fans the track created for the 2012 Olympics offers a challenging off-road course for both cyclists and runners.



### **Parks, gardens and history**

Southend has a number of lavish parks, public gardens and woodland.

It is a town steeped in history with an 11th century castle, an ancient priory and churches mentioned in the Domesday Book as well as several local museums.



## **Thurrock**



### **Food and drink**

With over 300 places to eat in the borough, from large chains and independent family-run restaurants to our own Waves restaurant, Southend offers a choice of global cuisine.

At our University Centre Thurrock you will discover that the area is rich in history and culture, with no shortage of stimulating activities from days spent visiting stately homes to heady weekends at music festivals.

**“By choosing to study  
at this vibrant, modern  
College you can be  
assured of receiving a  
high quality education  
and an excellent  
student experience.”**

Colin Bladen-Kopacz  
**Dean (Higher Education)**

# Our partners

## University of the Arts London (UAL)

The University of the Arts London offers an extensive range of courses in art, design, fashion, communication and performing arts. Its graduates go on to work in and shape creative industries worldwide. The university draws together six renowned colleges, each with its own world-class reputation, including Central Saint Martins. Each has a long established, global reputation for producing outstanding work. The university is ranked the world's sixth best for art and design. (World university rankings 2018).

## University of East Anglia (UEA)

UEA is world-renowned for excellence both in learning and research. With alumni including Booker Prize-winning authors Ian McEwan, Kazuo Ishiguro and Anne Enright. The university ranks in the top 15 according to the Times and Sunday Times Good University Guide 2019 for the third year running and was also rated 14th in the Complete University Guide league table in 2019.

## Pearson

Building on their extensive body of applied research, Pearson's experts design, and our tutors deliver programmes that empower learning. This year over 100,000 students in the UK and worldwide will choose an HNC or HND to help them progress in their career. A Pearson's-accredited qualification is recognised by employers globally.

## The Open University

The Open University has provided learning programmes for over two million students. Its programmes are respected and recognised by employers and educational institutions world-wide. The CertEd and PgCE programmes offer practice-focused qualifications suitable for people working, volunteering or seeking to further their career in the education sector.

# How to find us

## **The Forum**

Elmer Square  
Southend-on-Sea  
Essex  
SS1 1NE

## **Telephone**

01702 215 011

## **Email**

[forumsec@essex.ac.uk](mailto:forumsec@essex.ac.uk)



## **Thurrock campus**

High Street  
Grays  
Essex  
RM17 6TF

## **Telephone**

01702 220400

(+44 for international calls)

## **Email**

[learning@southessex.ac.uk](mailto:learning@southessex.ac.uk)



## **The Bob and Tamar Manoukian Costume Centre**

High House Production Park  
Vellacott Close  
(off London Road)  
Purfleet  
RM19 1RJ

## **Telephone**

01708 892621



© OpenStreetMap contributors

# Contents

---

BSc (Hons) <b>Accounting &amp; Finance</b>	<b>14</b>
BA (Hons) <b>Business &amp; Entrepreneurship</b>	<b>18</b>
(CertEd) <b>Certificate in Education</b>	<b>20</b>
BSc (Hons) <b>Computer Games Design</b>	<b>24</b>
HNC <b>Construction &amp; the Built Environment</b>	<b>28</b>
BA(Hons) <b>Costume Construction</b>	<b>32</b>
BA (Hons) <b>Counselling</b>	<b>36</b>
BSc (Hons) <b>Criminology &amp; Forensic Investigation</b>	<b>40</b>
BA (Hons) <b>Digital Animation</b>	<b>44</b>
BA(Hons) <b>Early Years Education</b>	<b>48</b>
Level 5 Diploma <b>Education &amp; Training</b>	<b>52</b>
BSc (Hons) <b>Exercise, Health &amp; Sports Performance</b>	<b>56</b>
BA (Hons) <b>Fashion Communication</b>	<b>60</b>
BA (Hons) <b>Fashion Design</b>	<b>64</b>
BA (Hons) <b>Film &amp; Television Production</b>	<b>68</b>
BA (Hons) <b>Fine Art</b>	<b>72</b>
HNC <b>General Engineering</b>	<b>76</b>
BA (Hons) <b>Graphic Design</b>	<b>80</b>
BA (Hons) <b>Interior Design</b>	<b>84</b>
HND <b>Performing Arts (Acting Pathway)</b>	<b>88</b>
HND <b>Performing Arts (Dance Pathway)</b>	<b>92</b>
BA (Hons) <b>Photography</b>	<b>96</b>
PgCE <b>Professional graduate Certificate in Education</b> (FE and Skills Sector)	<b>100</b>
BSc (Hons) <b>Psychology &amp; Sociology</b>	<b>104</b>
BA (Hons) <b>Special Educational Needs &amp; Disability Studies</b>	<b>108</b>
<b>Access courses</b>	<b>112</b>



# BSc (Hons) Accounting & Finance

**Campus:** Southend

**UCAS Code:** N400

**Cost per year:** £9,000



## Introduction

This course will develop knowledge, skills and understanding in the key accounting disciplines of financial reporting, management accounting, finance, taxation and audit. It will provide a conceptual foundation

for professional careers in management or business, developing commercial awareness, critical and analytical thinking. You will acquire the problem-solving skills required in a rapidly changing business environment. The core modules will offer scope

for exemption from the ACCA for papers F1 to F9 and accreditation for this will be sought on completion of the validation. The course programme also allows for potential exemptions from CIMA, ICAEW and CIPFA.

# What's covered?

## Year one

- Introduction to management accounting
- Introduction to financial accounting
- Quantitative methods for accounting
- Business and economic environment
- Professional skills for accountants

## Year two

- Management accounting for decision making and control
- Financial reporting
- Financial markets and investment
- Taxation
- Principles of auditing
- Company law and governance

## Year three

- Strategic management accounting
- Advanced financial reporting
- Corporate financial management
- Audit practice
- Dissertation/project



**“This course will develop knowledge, skills and understanding in the key accounting disciplines of financial reporting, management accounting, finance, taxation and audit.”**

## Graduate destinations

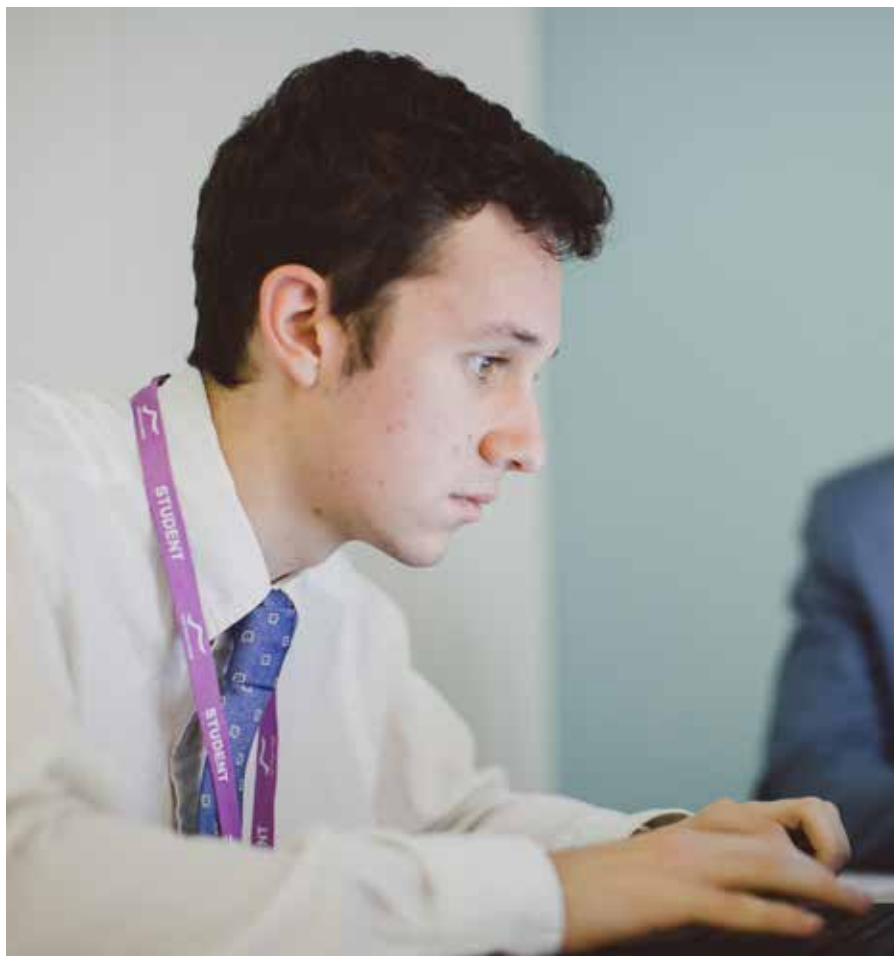
There is a good supply of accounting and finance employment opportunities for graduates in the Essex area and nationally. Many graduates pursue professional training to obtain further professional qualifications leading to careers in finance, management, public sector, forensic accountants, actuaries and

actuarial analysts, business advisers or stockbrokers. Other career paths within related professions include data analysts, data scientists, economists, licensed conveyancers, management consultants, purchasing managers, retail bankers and tax advisers.



## Key features

- Free Surface pro for every student\*
- Designed specifically for students who want to make money



---

### **Entry Requirements**

A minimum of 88 UCAS points from one or more of the following

- At least two A-levels
- BTEC Level 3 Extended Diploma Diploma/Subsidiary Diploma/Certificate [QCF]
- BTEC National Award/Certificate
- Diploma [NQF] International Baccalaureate
- International Baccalaureate
- Access to Higher Education Diploma 30 credits at Merit/Distinction
- GCSE English and Maths at grade C (old specification) or Grade 4 (new specification) or above OR a Level 2 equivalent such as functional skills

**“You will acquire the  
problem-solving skills  
required in a rapidly  
changing business  
environment.”**



# BA (Hons) **Business & Entrepreneurship**

**Campus:** Southend

**UCAS Code:** N200

**Cost per year:** £9,000



\*Please note: This course will run subject to approval by the University of East Anglia (UEA). This means the course is currently going through UEA's process to confirm the course will lead to a UEA award.

## **Introduction**

The course is designed to provide you with both a theoretical and practical knowledge of business engagement alongside developing your creative and strategic skill set to enable and enrich your entrepreneurial

and enterprise talents.

It also accommodates and acknowledges the importance of the creative industries as the fastest growing part of the UK economy and recognises the opportunities this sector now provides for

future employment. It is an area that would benefit from an injection of entrants who are able to bridge the business-creatives divide. This course aims to arm you with the skills to bridge the gap by unifying business and creative orientations.



# What's covered?

## Year one

- Business and economic environment
- Introduction to marketing and branding
- Business accounting
- Essentials of entrepreneurship and enterprise
- Business analysis and decision-making
- Business law and ethics

## Year two

- Managing product development
- Business finance
- Understanding markets and consumers
- Business planning to execution
- Business games simulation
- Human resource management and employment law

## Year three

- Strategic and entrepreneurial management
- Effective marketing and business intelligence
- Contemporary challenges in entrepreneurship
- Business project/ consultancy report/ start-up incubation



**“This course will develop your creative and strategic skill set to enable and enrich your entrepreneurial and enterprise talents”**

## Graduate destinations

You can progress to post-graduate education, pursue a career in an entrepreneurial and/ or creative environment or establish your own business.

## Entry Requirements

A minimum of 80 UCAS points from one or more of the following

- At least two A-levels
- BTEC/UAL Level 3 Extended Diploma/Diploma/ Subsidiary Diploma/ Certificate [RQF]

- BTEC National Award/Certificate/ Diploma [NQF]
- Access to Higher Education Diploma (minimum 15 credits at merit or above)
- International Baccalaureate
- AQA Baccalaureate
- Progression Diploma
- Advanced Diploma

## Key features

- Free Surface pro for every student\*\*
- Prepares you for a career in an entrepreneurial or creative environment

# (CertEd) Certificate in Education

---

**Campus:** Southend

**Course Code:**

Part time: 5616

Full time: 80065

**Cost per year:**

Part time: £2,250

Full time: £7,750



This degree is validated by the  
**Open University**



**To apply visit:** [www.southessex.ac.uk/course/certificate-education-certed](http://www.southessex.ac.uk/course/certificate-education-certed)

---

## Introduction

The Certificate in Education is a Level 5 teaching qualification which has a teaching/training practice requirement.

If you wish to gain a nationally-recognised

Level 5 teaching certificate in the post compulsory sector this course will meet your requirements.

This course is ideal if you work, or want to work as a teacher or trainer in the further education and skills sector. It is also suitable if

you are in or want to start a career in a teaching or training role or if you are a teacher or trainer who is seeking career progression in your area of work.

# What's covered?

A variety of teaching strategies are used, such as group interaction, paired and individual work, one-to-one seminars, guest speakers, support from subject specialist mentors and regular tutorial input. A range of interactive technologies are taught and are available for use by trainees.

## Part-time programme

- Study four modules per year, eight modules across the two year programme
- One evening per week in college

## Full-time programme

- Study eight modules in one year
- Two days in college, two on placement

## Modules

- Principles of teaching and learning
- Developing teaching and learning
- Behaviour management
- Enabling learning by assessment
- Theories and principles in pedagogy
- Developing resources for inclusive practice
- Wider professional practice
- Action research project



**“This course is ideal if you work, or want to work as a teacher or trainer in the further education and skills sector”**

## What can I do after this?

After completion of the course you will be able to apply for Qualified Teacher: Learning and Skills status (QTLS). QTLS is equivalent to but distinct from QTS (Qualified Teacher Status for ages 5-11 or 11-18 in schools).



- Key features**
- One-to-one seminars
  - Option to study full or part-time

## Entry Requirements

- Hold a Level 3 qualification in their chosen subject specialism
- Hold GCSE maths and English at C / 4 grade or above, or equivalent (numeracy or literacy at Level 2, such as Functional Skills, Learn direct etc – Evidence of this will be required during the application cycle
- We will consider applicants holding overseas qualifications that are equivalent to those described above. For an assessment of overseas qualifications contact National Academic Recognition Information Centre for the United Kingdom (NARIC). If NARIC deem your English language qualification not to be equivalent to a GCSE grade C or above, you must hold an IELTS qualification with a minimum score of 7 in each element.

**N.B.** Applicants must hold these qualifications before applying for the course

- A minimum of 100 hours of teaching across the duration of the course (50 hours across each year of study for part-time) during which you have full responsibility for planning, delivering and assessing specific area/s of the institution's provision. The placement should be within a local school teaching 14-plus students, a local sixth-form teaching post-16 learners or a local college teaching post-16 or adult learners
- A mentor in the workplace who is a qualified teacher/lecturer (i.e. PgCE or Cert Ed) and where possible is a subject specialist in the same area as the trainee teacher. Where the mentor is not a subject specialist the trainee teacher will require the support of a named subject coach

- A completed Teaching and Mentor Hours form from your workplace which you will be provided with prior to our diagnostic event to confirm both of the above
- A 500-word written piece, prescribed following application and returned to the ITE team prior to or at interview (for details please contact [ITETeam@southessex.ac.uk](mailto:ITETeam@southessex.ac.uk))

### Additional Entry requirements – Part-time

You must be working in a paid educational position.

### Additional Entry requirements – Full-time

You must secure a suitable teaching placement. Whilst the ITE team will give advice on how to apply for positions we do not provide you with a teaching placement. It is the responsibility of the prospective trainee to arrange their own placement.







# BSc (Hons) Computer Games Design

Campus: Southend

UCAS Code: WG24

Cost per year: £8,000

This degree is validated by the  
University of the Arts London

ual:



## Introduction

If you have commitment and an awareness and enthusiasm for original ideas, along with the desire to become a member of the future generation of computer games developers, this is the perfect programme for you.



**“Become a member of the future generation of computer games developers”**

# What's covered?

## Year one

- Contextual studies
- Visual storytelling
- Programming
- 3D modelling and texturing



## Year two

- Game level design
- Games animations
- Professional and cultural development
- Mobile game development techniques

### Additional feature

- Business workshops (optional with no additional cost).

## Year three

- Dissertation project
- Final major project development
- Final major project
- Computer games management

### Additional features

- AET Level 3 Award in Education and Training (optional with no additional cost).

## Guest speakers

Students benefit from several guest speakers from industry, including professionals from TT Games, Creative Assembly, ILM, Framestore and ifour.

## Field trips

Students have recently had the opportunity to visit games studios in France and Germany.

## Live briefs

Every two to three months you will undertake a 'one hour challenge', where you will need to model or develop something.



- Key features**
- Mixture of creative & technical skills
  - Course covers virtual reality and augmented reality

### What can I do after this?

As a BSc (Hons) Computer Games Design graduate you will be prepared for employment in the creative industries such as the computers games, film and TV, visual effects and broadcast industries. In addition to this you could pursue software development opportunities. You may

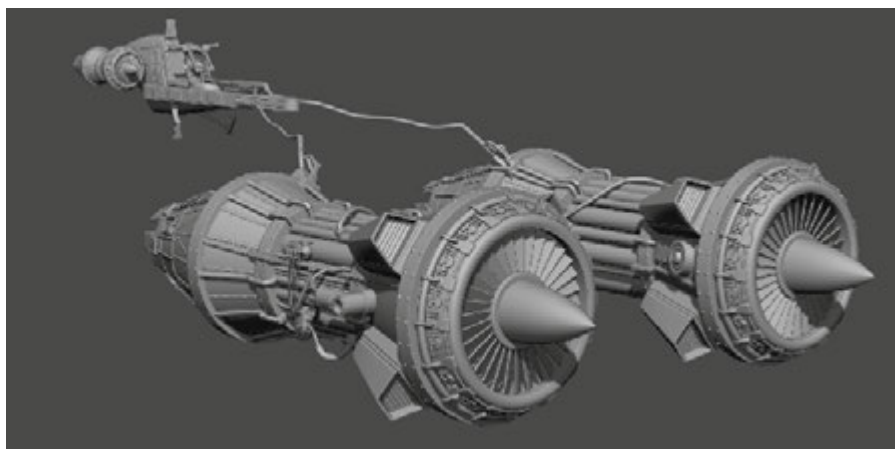
also wish to continue your studies at Masters level, to specialist postgraduate design programmes, or alternatively to professional teacher training courses.

### Graduate destinations

Students have progressed to a range of companies, not just in computer games development. Graduates progress into games and

effects studios, but also animation, rigging TDs and motion capture. Typical graduate jobs include:

- FX artist
- Concept artist
- Environment artist
- Visual designer
- Level designer
- Animation programmer



### Entry Requirements

You will need a minimum of 64 UCAS points from one or more of the following:

- GCE A level
- BTEC Diploma or Extended Diploma or Access to HE Diploma
- It is expected that Students should have: GCSE English and Maths grade 4 (C), or if English is not the student's first language, IELTS (Academic) 6.0 or equivalent
- Other qualifications will be considered on an individual basis

Appropriate experience/ skills may also be taken into consideration and mature students who do not meet minimum academic standards will need to demonstrate equivalent work experience. In these cases candidates may be required to attend an interview and/or provide a portfolio of academic and creative work, in order to determine their suitability to the course.



# HNC Construction & the Built Environment

**Campus:** Thurrock

**UCAS Code:** 40079

**Cost per year:** £3,250



This degree is validated by  
**Pearson**



## Introduction

Our Higher National Certificate course offers a good balance of academic theory and practical industry knowledge which is firmly aligned to your job requirements from day one.

Through high quality lectures, case study research and employer-based projects you will gain a unique blend of general skills along with specific industry knowledge in sustainable construction management. Content on the course

centres around current UK and International Building Projects.

Developed in consultation with employers by Pearson, this course is suited for those pursuing a career in construction & the built environment.



# What's covered?

This two-year course is assessed through coursework. You will complete assignments that focus on the practical application of the assessment criteria, providing a realistic scenario for you to adopt, making maximum use of work-related practical experience and reflecting typical practice in the construction and built environment. The HNC is graded pass, merit or distinction.

## Contact hours

- One day a week
- Six hours contact time comprising lectures and study sessions
- One hour tutorial

The HNC Construction and the Built Environment has mandatory units including construction information (drawing, detailing, specification), science and materials, individual project, legal and statutory responsibilities in

construction. Other units will include surveying, measuring & setting out and construction practice & management.

There is strong emphasis on analysis and evaluation of subject-specialist concepts and procedures. By the end of the programme you will have gained significant sector skills knowledge and competence to undertake middle to senior management responsibilities.



**“Theory and practical industry knowledge which is firmly aligned to your job requirements from day one”**

## Guest speakers

You will also have the opportunity to attend guest speaker lectures delivered by industry experts from the Chartered Institute of Building and the Royal Institute of Chartered Surveyors (RICS).

## Field trips

You will benefit from educational trips to key UK construction projects, such as The National

Self Build & Renovation Centre and the Othona zero carbon project.

## Graduate destinations

Students progressing from the course have gone to work for:

- Gilles-Surveyors
- Skanska
- Bradford Watts
- Sharkey



## Key features

- Industry-trained tutors
- A good balance of academic theory and practical industry knowledge



---

### Entry Requirements

You will need a minimum of 64 UCAS points from one or more of the following:

- BTEC Level 3 Construction
- AVCE/GNVQ in a related vocational area (Level 3)
- An A-level with strong performance in relevant subjects
- A related Access to Higher Education Certificate or other related Level 3 qualifications
- Related work experience supported by GCSEs at grades A\*-C or equivalent
- You will also need GCSE English and Maths at grade C (old specification) or Grade 4 (new specification) or above OR a Level 2 equivalent such as functional skills
- All candidates will be required to attend an interview



# BA(Hons) Costume Construction

Campus: Thurrock

UCAS Code: B5L2

Cost per year: £9,000

This degree is validated\* by the  
University of the Arts London

ual:



\*This course is subject to revalidation. Revalidation is a process that makes sure students get a high quality academic experience. During revalidation there may be some changes to course content. Please contact us if you have any questions about this course.

## Introduction

The BA (Hons) Costume Construction programme places an emphasis on the knowledge and use of both historical and contemporary pattern cutting, construction, textiles and finishing techniques. Areas of study may include opera,

dance, theatre, musical theatre, performance art, film and television.

This programme is delivered across two locations, the first at our Grays Campus, where our newly updated costume and print studios are based. The second at the ROH Costume Centre

at Purfleet, this centre has been purpose built for the ROH and houses their archive collections, costume store and one of their workroom departments. Both campuses provide students the opportunity to utilise industry standard machinery and resources.

# What's covered?

## Year one

The first year of the programme will introduce you to concepts of design, pattern cutting and garment production techniques.

### Units

- Costume in context
- Textiles for costume construction
- Costume construction I
- Costume construction II
- Technical and skills portfolio

## Year two

Expanding on your learning in the first year, year two offers opportunities to work with live briefs and undertake work placements.

### Units

- Costume construction III
- Costume for performance
- Costume conservation
- Work placement
- Costume design and realisation

Students successfully completing year two may progress to year three or will be eligible for the award of a Diploma of Higher Education.

## Year three

You will undertake a number of final extended projects of your own personal focus which is supported by written elements and a visual portfolio of work.

### Units

- Cultural and historical study
- Personal project
- Professional portfolio
- Live exhibition



**"The programme is unique as it has been developed in collaboration with the Royal Opera House (ROH)."**



### Key features

- Live projects
- Students have access to the Royal Opera House store and archives



## What can I do after this?

You can progress to a career in a variety of roles including costume construction, costume design, touring theatre, textiles, dying and breaking down, women's wear, menswear, tailoring, prop costume, running wardrobe, costume conservation and restoration.

---



## Entry Requirements

You will need a minimum of 64 UCAS points from one or more of the following:

- At least two A-levels
- BTEC Level 3 Extended Diploma/Diploma/Subsidiary Diploma/Certificate [RQF]
- BTEC National Award/Certificate/Diploma [NQF]
- International Baccalaureate
- AQA Baccalaureate
- Progression Diploma
- Advanced Diploma
- You will also need GCSE English at grade C (old specification) or Grade 4 (new specification) or above OR a Level 2 equivalent such as functional skills
- Portfolio-based interview



Image credits: Carrie-Ann Stein | Jacqui Cox | Eleanor Wilkinson | Gillian Marais | Lisa Dear  
Year one group project, National Trust, Southwell Workhouse



**"The programme places an emphasis on the knowledge and use of both historical and contemporary pattern cutting, construction, textiles and finishing techniques."**



# BA (Hons) Counselling

**Campus:** Southend

**UCAS Code:** B940

**Cost per year:** £8,500



## Introduction

This course will develop your personal and professional integrity whilst promoting sound ethical practice.

We aim to train you from a person-centred and existential base whilst integrating methodologies

that develop theoretical knowledge and practical counselling skills.

You will develop effective working practices through working with clients, developing your personal and professional skills base, and applying theory

and philosophy to self and to practice. You will also develop a critical and analytical understanding of the diversity of the therapeutic community, broad counselling theory, methodologies of practice and the role of counselling in wider society.

# What's covered?

The specific aim of this programme is to offer you a rigorous theoretical and practical training as a baseline for your professional counselling practice.

## Work placements

In the last two years of your programme you will be required to undertake a work placement

totalling 100 clinically supervised, voluntary counselling hours. We will offer ideas in the first year, and provide leads for potential placements you can apply to.

## Personal therapy

You are required to undertake 30 hours of personal therapy in the first two years of the

programme to enhance your personal development and self-awareness. You will be required to become student members of an appropriate professional, regulatory body, such as the BACP (British Association of Counselling & Psychotherapy) and to maintain personal indemnity insurance in line with industry requirements.



**“Develop your personal and professional integrity as a counsellor whilst promoting sound ethical practice”**

## Guest speakers

You will benefit from several guest speakers working at organisations including, for example: Cruse Bereavement Care; Chelmsford Prison; Basildon Women's Refuge Centre; Southend Young People's Drug and Alcohol Team; and Transpire

## What can I do after this?

You can progress onto postgraduate programmes including:

- Counselling
- Psychotherapy and counselling
- Therapeutic counselling
- Counselling children and young people
- Psychology
- Psychological research

## Graduate destinations

When you have graduated you will be able to pursue a number of different career options including:

Counsellors in a variety of settings including schools, counselling agencies, charitable organisations, corporate entities and wellbeing organisations.

Other settings that require good communication skills in the fields of mental health and social services.

- Key features**
- 100 face-to-face counselling hours
  - No exams, work assessed by coursework and dissertations

## Course includes

- 30 hours of Personal Therapy
- A minimum of 25 hours Clinical Supervision
- BACP Membership (student)
- Personal Indemnity Insurance in years 2 and 3



---

## Entry Requirements

You will need a minimum of 64 UCAS points from one or more of the following:

- At least two A-levels
- BTEC Level 3 Extended Diploma/Diploma/Subsidiary Diploma/Certificate [QCF]
- BTEC National Award/Certificate/Diploma [NQF] International Baccalaureate
- Access to Higher Education Diploma (minimum 15 credits at Merit or above)
- You will also need GCSE English and Maths at grade C
- (old specification) or Grade 4 (new specification) or above OR a Level 2 equivalent such as functional skills
- Interviewed
- DBS (Disclosure and Barring Service)







# BSc (Hons) Criminology & Forensic Investigation

**Campus:** Southend

**UCAS Code:** LF64

**Cost per year:** £8,000



## Introduction

This programme allows you to progress to a career in criminology, forensic investigation or investigative policing. Society needs to deal with crime more effectively, which requires an understanding of the underlying causes of

criminal behaviour and the principles of crime scene investigation.

You will have access to extensive study resources including our automotive workshop, digital forensic computer software and a crime scene room for you

to learn how to collect and process evidence from mock scenarios. You will develop your understanding of the types of crime committed and theories behind these crimes whilst looking at elements of offender profiling and rehabilitation.



# What's covered?

## Year one

- Introduction to criminology
- Crime scene investigation
- Introduction to policing
- Introduction to forensic science
- Academic skills and applied practice

## Year two

- Criminological research methods
- Criminal investigation and the justice system
- Cybercrime and society
- Serious offenders and imprisonment
- Role of the expert witness
- Forensic taphonomy and entomology

## Year three

- Dissertation
- Professional development
- Terrorism, security and political violence
- Critical issues in fatality management

## Guest speakers

There are several guest speakers during the programme, for example: Crime scene investigators from Essex Police; senior ranking police officers and a forensic psychologist.

## Visits

The programme includes a number of visits, these include The British Library, The Central Criminal Court and The Clink Museum.



**“Progress to a career in criminology, forensic investigation or investigative policing.”**

## What can I do after this?

Potential career routes include working in main stream policing (possibly as an officer or crime scene technician), the criminal justice and prisons system

or in businesses that may be at risk from financial fraud or cyber-crime. Graduates from this degree programme may also seek employment in related areas such as teaching or probation after a period of further study.

- Key features**
- 40 hour work placement
  - Course leader has 35 years industry experience

## Graduate destinations

Employment from previous graduating cohorts have included roles within Essex and Metropolitan Police, disaster victim identification, counter terrorism within financing, teaching, domestic abuse co-ordinators, laboratory testing, prison workers, crime scene investigators and within human rights groups such as Amicus. Students have also progressed on to higher level training and have entered Masters Qualifications in Criminology, Terrorism Studies, Digital Forensics, Anthropology and Research. In addition, graduates of the programme have also undertaken teacher training and have achieved

either QTS or QTLS, enabling them to take up roles in mainstream schools across the primary, secondary and further education sectors.



---

## Entry Requirements

You will need a minimum of 64 UCAS points from one or more of the following:

- At least two A-levels
- BTEC Level 3 Extended Diploma/Diploma/Subsidiary Diploma/Certificate [QCF]
- BTEC National Award/Certificate/Diploma [NQF]International Baccalaureate
- International Baccalaureate

- Access to Higher Education Diploma 30 credits at Merit/Distinction
- For any qualification not identified above the HE Admission Team will determine equivalences through UKNARIC
- You will also need GCSE English and Maths at grade C (old specification) or Grade 4 (new specification) or above OR a Level 2 equivalent such as functional skills





# BA (Hons) Digital Animation

**Campus:** Southend

**UCAS Code:** W615

**Cost per year:** £8,500



Image credit: Nzoputachi Chintua-Chigbu

This degree is validated by the  
University of the Arts London

ual:

## Introduction

Digital animation is a growing field used in a range of industries with applications in everything from Hollywood movies to advertising and video games. This programme introduces you to the technology and skills

needed for employment in these and other industries.

The degree focuses on building essential knowledge and skills in digital animation, meeting the demands for a diverse range of realistic commercial scenarios

across a range of media platforms and contexts.

# What's covered?

## Year one

- Historical and contextual studies
- Ideas factory
- Principles of animation
- Animation production

## Year two

- Art fundamentals for animation
- Concept development
- Narrative animation
- Character performance

## Year three

- Dissertation
- Final major project development
- Final major project
- Professional development



**"A diverse range of realistic commercial scenarios across a range of media platforms and contexts"**



Image credit: Sophie Newman

## Guest speakers

A series of guest speakers including Andy Wyatt, Frazer Maclean, Bobby Chiu and Michaela Freeman.

## Field trips

Students benefit from several field trips including a residential trip to Los Angeles and the VFX Festival in London.

## Live briefs

You will have the opportunity to build your portfolio through live briefs.

- Key features**
- FREE local limitless cinema tickets
  - Trips to London, LA or Tokyo

## Graduate destinations

The majority of our graduates find employment in film and TV production studios, advertising companies, publishing houses and web design firms. Studio start-ups also occur among our graduates as a direct result of the positive collaborative atmosphere on the programme.

Graduates have progressed to animation studios including:

- Fox International Channels
- Blue-Zoo Studios
- Nerve Studios

You can progress to postgraduate study including:

- MA Animation
- MA Character Animation
- MA Illustration and Visual Media
- MA Interaction Design Communication

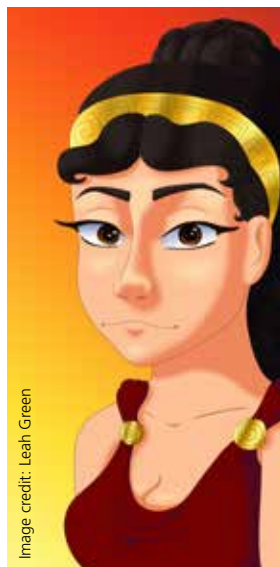


Image credit: Leah Green

## Entry Requirements

You will need a minimum of 64 UCAS points from one or more of the following:

- At least two A-levels
  - BTEC/UAL Level 3 Extended Diploma/Diploma/Subsidiary Diploma/Certificate [RQF]
  - BTEC National Award/Certificate/Diploma [NQF]
  - Access to Higher Education Diploma
  - International Baccalaureate
  - AQA Baccalaureate
  - Progression Diploma
  - Advanced Diploma
- You will also need GCSE English at grade C (old specification) or Grade 4 (new specification) or above OR a Level 2 equivalent such as functional skills qualification
  - You will also be required to undertake a portfolio-based interview



Image credit: Nzoputachi Chintua-Chigbu



Image credit: Harry Green





# BA(Hons) Early Years Education

Campus: Southend

UCAS Code: X310

Cost per year: £8,000



## Introduction

As an early years professional you can help to transform children's lives and play an instrumental role in helping to prepare them for learning and later life.

Increasingly research shows

the importance of children's earliest educational experiences. High quality experiences with trained and committed staff will prepare children most effectively for later learning.

By choosing to study for the BA (Hons) Early

Years Education, you will learn this underpinning theory and research, enhance your critical thinking, learn to become a reflective practitioner and discover the skills needed to facilitate children's development.

# What's covered?

## Year one

- Play and learning
- The early years professional
- Curriculum studies
- Social constructs of childhood: the changing nature of children and childhood
- Introduction to research
- Perspectives on children's development



## Year two

- Social constructs of childhood: families, inequalities and social justice
- Transitions and the role of the professional
- Pedagogy and early learning
- Exploring and investigating mathematics and science in the early years curriculum
- Language, literacy and communication
- Research methods and proposal

## Year three

- Dissertation
- Professional practice
- Childhood in context: where are we heading?
- Creativity in the curriculum: a holistic approach
- Psychological perspectives on children's behaviour

---

**"As an early years professional you can help to transform children's lives"**

---

## Work placements

There is a requirement to undertake a minimum work placement of one day per week for 24 weeks across all 3 years of the programme. Two thirds of students placement activity must be carried out within an EYFS setting.

## Guest speakers

You will benefit from several guest speakers as part of the programme, including: special education teaching practitioners, a speech and language therapist, a counselling specialist.

Third year students from the programme also deliver to levels 4 and 5 in areas of special academic interest.



- 
- Key features**
- 70% of graduates go on to teach
  - Various pathways into other careers other than children's education

## What can I do after this?

### Graduate destinations

Students who successfully complete the BA (Hons) Early Years Education degree are typically very successful at finding employment in professional roles within the early years and wider education sectors.

Our students progress into an outstanding range of jobs, including:

- Working in an early years setting overseas, including Japan
- Nursery management
- Sure Start centres
- Portage services within social services
- Police family liaison worker

Some graduates also decide to work for a year as a Teaching Assistant before progressing to a PgCE

---

### Entry Requirements

You will need a minimum of 64 UCAS points from one or more of the following:

- At least two A-levels
- BTEC Level 3 Extended Diploma/Diploma/Subsidiary Diploma/Certificate [QCF]
- BTEC National Award/Certificate/Diploma [NQF]
- International Baccalaureate
- International Baccalaureate
- Access to Higher Education Diploma 30 credits at Merit/Distinction
- For any qualification not identified above the HE Admission Team will determine equivalents through UKNARIC.
- You will also need GCSE English and maths at grade C (old specification) or Grade 4 (new specification) or above OR a Level 2 equivalent such as functional skills
- You will also need a GCSE in science at grade C (old specification) or Grade 4 (new specification) or above if you intend to go into teaching







# Level 5 Diploma **Education & Training**

**Campus:** Southend

**Course Code:** 5624

**Cost per year:** £1,750



**To apply visit:** [southessex.ac.uk/course/education-and-training-level-5-diploma](https://southessex.ac.uk/course/education-and-training-level-5-diploma)

## **Introduction**

The Level 5 Diploma in Education and Training is a teaching qualification which has a teaching/training practice requirement. It is an 'in service' qualification designed for those

working or wishing to work as teachers/trainers.

This course is ideal for you if you work, or want to work as a teacher/trainer in the further education and skills sector; if you are in or want to start a career in a teaching/training role;

if you are a teacher/trainer who is seeking career progression in your area of work; or if you have completed the City and Guilds Award in Education and Training, or Award in Preparing to Teach in the Lifelong Learning Sector and wish to progress.



# What's covered?

The qualification covers the knowledge and skills required by teachers/trainers in the further education and skills sector, such as:

- Teaching, learning and assessment in education and training
- Developing teaching, learning and assessment in education and training

- Theories, principles and models of education and training
- Wider professional practice and development in education and training

Trainees who successfully complete this qualification will take an analytical and practical approach to all aspects of planning, delivering and assessing inclusive teaching and

learning. Whilst doing this, trainees will embed theories and principles in education and training and demonstrate them in their practice. They will also carry out research into professionalism in education and training policies and consider their impact on their role and their accountability as a teacher/trainer.



**"This course is ideal for you if you work, or want to work as a teacher/trainer in the further education and skills sector"**

## What can I do after this?

After completion of the course you will be able to apply for Qualified Teacher: Learning and Skills status (QTLS). QTLS is equivalent to but distinct from QTS (Qualified Teacher Status for ages 5-11 or 11-18 in schools).



### Key features

- Wider professional practice
- Designed for those working or wishing to work as teachers/trainers

## Entry Requirements

- Must hold a Level 3 qualification in Subject Specialism
- A minimum of 50 hours of teaching during each year of study (total 100 hours across 2 years of study) during which you have full responsibility for planning, delivering and assessing specific area/s of the institution's provision. The placement should be within a local school teaching 14-plus students, a local sixth-form teaching post-16 learners or a local college teaching post-16 or adult learners
- Be a mentor in the workplace who is a qualified teacher/lecturer (i.e. PgCE or CertEd.) and where possible is a subject specialist in the same area as the trainee teacher. Where the mentor is not a subject specialist the trainee teacher will require the support of a named subject coach
- A completed Teaching and Mentor Hours form from your workplace which you will be provided with prior to the diagnostic event to confirm both of the above
- Satisfactory initial assessment in literacy. You will be invited to one of our diagnostic events where you will undertake a one hour online diagnostic assessment at L2 for English and a 30 minute hand written exercise. Applicants are expected to achieve a score of 50% in order to be made an offer onto the course. Therefore, we encourage you to do some revision prior to this session. You will find GCSE revision guides or functional skills books at level 2 suitable. Additionally, there are also variety of websites for practice materials, we recommend:
  - <http://www.bbc.co.uk/skillswise>
  - <http://www.bbc.co.uk/schools/gcsebitesize>
  - Work placements within an educational or community environment will require an enhanced DBS check





# BSc (Hons) Exercise, Health & Sports Performance

**Campus:** Southend

**UCAS Code:** C602

**Cost per year:** £8,500



\*This degree is awarded by the  
**University of East Anglia**

**UEA** University of  
East Anglia

\*Please note: This course will run subject to approval by the University of East Anglia (UEA). This means the course is currently going through UEA's process to confirm the course will lead to a UEA award.

## Introduction

This course offers you the chance to study the six main strands of sports science (health & wellbeing, nutrition, professional practice, human physiology and sports performance). This

combines theoretical, practical and industry work. The theoretical work will allow you to learn from the historical application of sports science and how to critique past work and apply contemporary principles for the

betterment of human conditioning within exercise, health and sports performance. In addition to developing awareness of sports ideologies within the six strands, you will demonstrate professional development.

# What's covered?

## Year one

- Health and wellbeing (children and adolescents)
- Foundations of anatomy & physiology
- Skill acquisition for sport & exercise
- Foundations of nutrition for health
- Sport & exercise psychology
- Introduction to exercise injuries

## Year two

- Health and wellbeing (adults and older people)
- Applied biomechanics
- Physical programming for sport & fitness
- Applied nutrition for sport & exercise
- Applied psychology for performance
- Research in sport, exercise & health

## Year three

- Exercise rehabilitation
- Analysis of physical performance
- Career progression & employability
- Research project
- Community project



**“This course offers you the chance to study the six main strands of sports science.”**

## Graduate destinations

You will have the opportunity to find employment across a variety of sectors. Probable job titles for a graduate from the programme include: exercise physiologist, health promotion specialist, sport science technician, sports development officer, performance analyst, personal trainer,

nutritional advisor, Behaviour Change, Research Assistant or Teacher. These roles are not an exhaustive list, and you may also progress into supporting or managerial roles within coaching, fitness, sports performance and education.



- Key features**
- Employment across a variety of sectors
  - International collaboration with other universities



---

### Entry Requirements

A Minimum of 64 UCAS Points from one or more of the following:

- At least two A-levels
- BTEC Level 3 Extended Diploma/Diploma/Subsidiary Diploma/Certificate [QCF]
- BTEC National Award/Certificate/Diploma [NQF]
- International Baccalaureate
- International Baccalaureate
- Access to Higher Education Diploma (including 15 credits at Merit or above)
- For any qualification not identified above the HE Admission Team will determine equivalences through UKNARIC.
- Applicants will also need GCSE English and Maths at grade C (old specification) or Grade 4 (new specification) or above.

### Additional requirements

- Credit transfer and accreditation of prior learning or experience
- If you have achieved a qualification such as a foundation degree or HND, or have gained credit from another higher education institution, you may be able to enter the course at level 5 or level 6.
- Other qualifications and relevant work experience may also count for academic credit. Further information is available at in the Higher Education Admissions Policy & APL Policy for students studying on the University of East Anglia Degree.





# BA (Hons) Fashion Communication

Campus: Southend

UCAS Code: W213

Cost per year: £8,000

This degree is validated\* by the  
University of the Arts London

ual:



\*This course is subject to revalidation. Revalidation is a process that makes sure students get a high quality academic experience. During revalidation there may be some changes to course content. Please contact us if you have any questions about this course.

## Introduction

This course embraces the changing technologies in fashion's visual communication and marketing sectors. You will develop an understanding of marketing and promotion. You will develop a

personal signature with art direction, photography and styling whilst expanding your skills with report writing to support your creative work.

This programme focuses on developing the most relevant skills and

knowledge to the fashion industry, specifically for careers in marketing, public relations, styling, fashion photography, visual merchandising, fashion buying, creative publishing, branding, trend forecasting and illustration.

# What's covered?

## Year one

- Visual communication
- Fashion styling and photography
- Trend prediction
- Brand promotion
- Fashion illustration
- Cultural context
- Live project briefs set by industry or national competitions, such as H&M, Animal, Hi-Tec

## Year two

- Digital image – film, video, web
- Work placement – one month
- Personal development project – previous projects include the creation of short films, designing a magazine, web design and creating promotional materials and products

## Year three

- Dissertation
- Self-directed Honours Project



Image credit: Faye Masterson



**“Develop a personal signature with art direction, photography and styling”**

## End of year show

- You and your fellow students will decide on the venue and design an end of year show.
- Professional promotion, including progression, portfolio development and degree show

## Industry links

Course leaders and tutors are current practitioners in fashion publishing, graphic design, marketing, photography and illustration.



Image credit: Deb Ellis

- Key features**
- Promotional image making and creative marketing skills
  - Covers the lifestyle market as well as fashion and clothing

## What can I do after this?

Following completion of the BA (Hons) degree, you can progress to postgraduate study including the following Masters programmes at University of the Arts London:

- Strategic fashion marketing
- Fashion retail management
- Fashion photography
- Fashion communication

## Graduate destinations

Students have progressed to gain excellent careers in many fields. The majority of graduates gain employment within the fashion or marketing industries, including:

- Public relations assistant for RewardStyle.com
- Marketing assistant for Marks & Spencer - Ladieswear
- Visual merchandiser for Next
- Digital marketing executive for Bulldog Digital Media Agency

- Senior trainer and professional make-up artist for MAC
- Buyer for luxury lingerie brand
- Masters in Education at Open University
- Freelance fashion photographer for newspapers/magazines

---

## Entry Requirements

You will need a minimum of 64 UCAS points from one or more of the following:

- A-levels, preferably in art and design
- BTEC National Diploma with a minimum of pass profile
- Access to Higher Education Diploma Level 3
- Higher National Diploma (for possible direct entry onto year two)
- Foundation Diploma in Art and Design Level 4

- You will also need GCSE English at grade C (old specification) or Grade 4 (new specification) or above OR a Level 2 equivalent such as functional skills
- Portfolio based interview
- Other qualifications will be considered on an individual basis



Image credit: Sophie Maile



Image credit: Terri Dixon



# BA (Hons) Fashion Design

**Campus:** Southend

**UCAS Code:** W220

**Cost per year:** £8,000

This degree is validated\* by the  
**University of the Arts London**

## ual:



Image credit: Charlotte Nichols

\*This course is subject to revalidation. Revalidation is a process that makes sure students get a high quality academic experience. During revalidation there may be some changes to course content. Please contact us if you have any questions about this course.

## Introduction

Employing over 800,000 people and worth over £26 billion per year, fashion is the third largest industry in the UK. This course has been designed to respond to industry requirements and provide the skills and technical

expertise required for a range of fashion-based careers from designer or pattern cutter to merchandiser or buyer.

This programme provides you with skills and knowledge of garment construction, pattern

cutting, computer aided design and textiles. Access to the many other resources of the art and design department will enable you to be experimental while pursuing your creative vision.



# What's covered?

## Year one

- Fabrics & applied textiles
- Historical & contextual studies
- Technical studies
- Design practice
- Fashion design exploration

## Year two

- Creative pattern cutting
- Atelier concept & form
- CAM
- Cultural contexts & dissertation proposal
- Work placement

## Year three

- Dissertation
- Research and sourcing
- Subject realisation
- Professional promotion

Your three years will culminate in an end of year show.



**“engaging opportunities to showcase work to a wider audience”**



## Work placements

A work placement unit in year two offers the chance to gain invaluable industry experience and transferable skills to strengthen your CV and skillset ahead of your future career.

## Live briefs/projects

Visits from industry professionals are an integral part of the programme. Competitions and links with industry personnel provide exciting, engaging opportunities to showcase work to a wider audience.

## Field trips

You will take part in organised trips to exhibitions, galleries and professional studios to provide exposure to industry practice. In year two international trips are available.

## Key features

- Creative pattern cutting
- Research fabrics and fibres considering the sustainability of fashion

## Graduate destinations

Our graduates have followed prestigious careers in design, pattern cutting, production, buying, merchandising, styling, retail management and garment technology, including:

- Junior designer DCK concessions
- Head of womenswear design Gymshark
- Design room manager Hand & Lock
- Digital media designer Make It British
- Designer Martinelli Fashion
- Trainee tailor MacAngus & Wainwright
- Senior designer Dot & Cross



## Entry Requirements

You will need a minimum of 64 UCAS points from one or more of the following:

- A-levels, preferably in art and design
- BTEC National Diploma with a minimum of pass profile
- Access to Higher Education Diploma Level 3
- Higher National Diploma (for possible direct entry onto year two)
- Foundation Diploma in Art and Design Level 4
- Other qualifications will be considered on an individual basis
- You will also need GCSE English at grade C (old specification) or Grade 4 (new specification) or above OR a Level 2 equivalent such as functional skills.
- Portfolio based interview



# BA (Hons) Film & Television Production

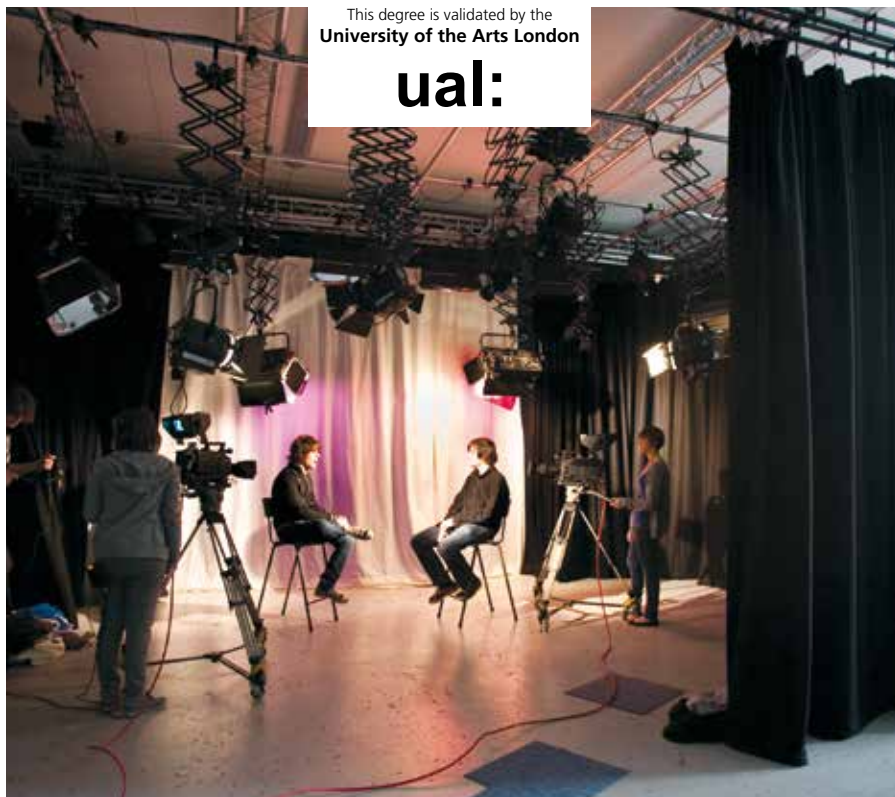
**Campus:** Southend

**UCAS Code:** P320

**Cost per year:** £8,500

This degree is validated by the  
University of the Arts London

ual:



## Introduction

This degree programme offers a combination of theory and practical work across all areas of film and TV production, focussing on practical units in the television studio, location filming, sound & vision,

scriptwriting and film production management.

It offers professional competence in film and television production within a nurturing environment that simulates a media industry workplace; equipping

students for professional digital film and television. You will be taught by lecturers who are industry practitioners alongside visiting professionals who will share their contemporary expertise through practice-based workshops.

# What's covered?

## Year one

- Introduction to creative production, writing and research techniques
- Ideas factory
- Historical and contextual studies
- Production
- Digital editing

## Year two

- Cinematography
- Creative portfolio
- Social media impact
- Film and television studies

### Additional feature

Business workshops (optional with no additional cost)

## Year three

- Production management
- Digital title sequencing
- Final project
- Dissertation project
- Additional features
- AET Level 3 Award in Education and Training (optional with no additional cost)
- Film project (optional)



**"A nurturing environment that simulates a media industry workplace"**



## Industry links

You will benefit from our outstanding links with industry, including James Esposito, recently of Underground Films, Lennox Brothers and ESG Media.

## End of year show

Your end of year show or film project will be screened as part of The Southend Film Festival. In the lead-up to this, you will also benefit from workshops, such as those offered at the BFI London Film Festival to learn how to set-up your own event.

## Field trips

You will benefit from the opportunity to take part in one or more field trips. Typical locations include: Los Angeles; New York; BFI London Film Festival; Visual Arts Festival; BVE at the ExCeL in London; and live TV productions including Pinewood and ITV.

### Key features

- FREE local limitless cinema tickets
- Third year film project earns you an IMDB credit



**Additional Features**

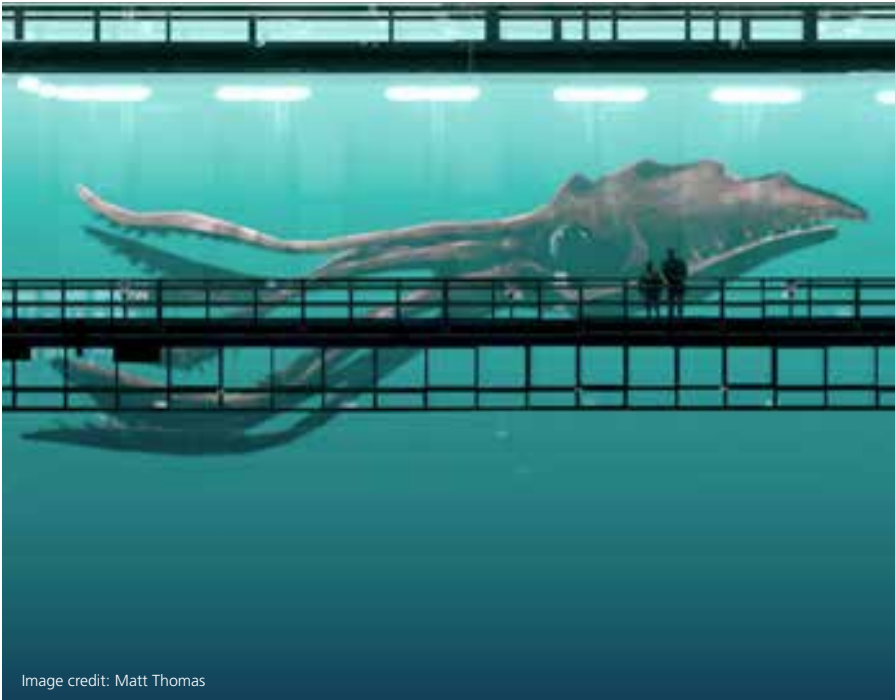
These are optional and offered free of fees.

A short teaching qualification, including

opportunities for teaching theory and practice.

There will be a film project designed to fulfill the assessment requirements for year 3 units. The final

film will be exhibited at The Southend Film Festival in May, which will entitle it to recognition from the Internet Movie Data Base.



**Entry Requirements**

You will need a minimum of 64 UCAS points from one or more of the following:

- At least two A-levels
- UAL Extended Diploma in Creative Media Production
- BTEC/UAL Level 3 Extended Diploma/Diploma/

Subsidiary Diploma/ Certificate [RQF]

- BTEC National Award/Certificate/ Diploma [NQF]
- Access to Higher Education Diploma (minimum 15 credits at merit or above)
- International Baccalaureate
- AQA Baccalaureate

- Progression Diploma
- Advanced Diploma
- You are expected to have a GCSE English and Maths at grade C (old specification) or Grade 4 (new specification) or above OR a Level 2 equivalent such as functional skills qualification





Directed by  
Si Andrews



THE GUARDIAN  
'IT'S A NICE FILM'



CONTENT PANDA FILMS PRESENTS SI ANDREWS' 'THE WOODWORKER'  
WITH DAN POWELL AND SI ANDREWS JAMES CARL READER AND HANNAH HARRISON  
MUSIC BY SI ANDREWS EDITOR SI ANDREWS



# BA (Hons) Fine Art

**Campus:** Southend

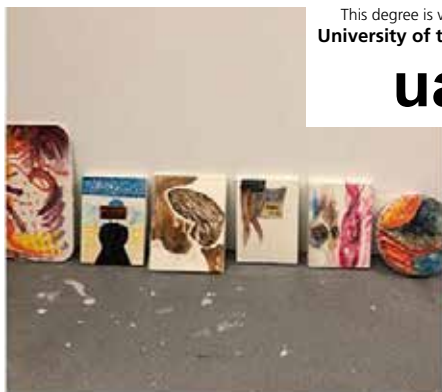
**UCAS Code:** W100

**Cost per year:** £8,000

This degree is validated\* by the  
**University of the Arts London**

## ual:

First year painting workshop



\*This course is subject to revalidation. Revalidation is a process that makes sure students get a high quality academic experience. During revalidation there may be some changes to course content. Please contact us if you have any questions about this course.

## Introduction

Fine artists continually challenge ideas, inviting society to broaden its attitudes and encourage a healthy level of debate and change. This programme provides you with a broad knowledge of fine art across a range

of mediums from painting, drawing, sculpture, and printmaking, to video, performance and photography.



# What's covered?

## Year one

- Introduction to fine art
- Historical and contextual studies
- Thematic, technical and conceptual development
- Introduction to studio practice

## Year two

- Professional practice
- Studio practice
- Site specific artwork
- Research methodologies
- Cultural contexts and dissertation proposal

## Year three

- Dissertation
- Subject realisation
- Professional practice



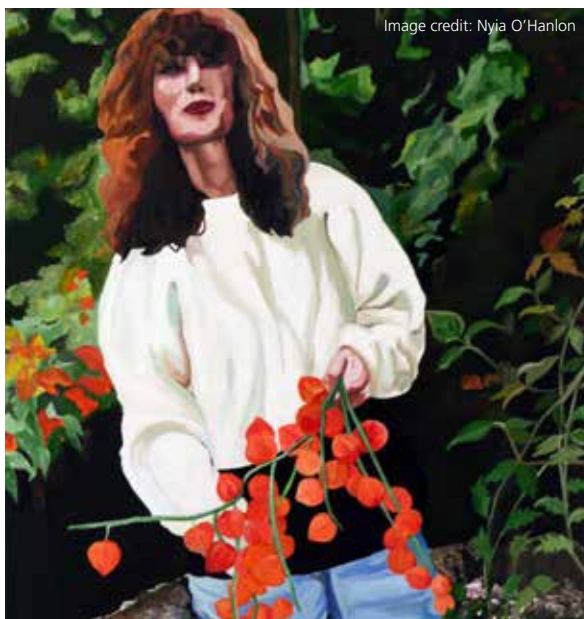
**"Fine artists continually challenge ideas, inviting society to broaden its attitudes"**

## Work placements and live briefs

There are excellent opportunities to gain practical experience in the form of live briefs. You will also have the opportunity to exhibit your work in the College's Campus Gallery and at outside venues such as The Old Waterworks and The Victoria Plaza.

## Guest speakers

The programme regularly includes guest speakers, including artists Shaan Syed, Lindsey Mendick and Holly Hendry.



- Key features**
- Own studio space for the full three years
  - Visiting artists and guest speakers

## Final year show

You will undertake a professional exhibition of your work at the end of year three. You and your fellow students will decide the venue.

## Graduate destinations

Our graduates have gone on to become internationally-acclaimed artists, curators, art critics, lecturers, teachers and workers in diverse roles within the creative industries.

One of our recent graduates is currently working at Paul Siggins - The Mosaic Studio.

Graduates have also progressed to postgraduate study, including overseas, with one student studying an MA in Australia.

Graduates also progress to postgraduate study in the UK, including MA Fine Art, MA Painting and MA Drawing at University of the Arts London.

---

## Entry Requirements

You will need a minimum of 64 UCAS points from one or more of the following:

- At least two A-levels
- BTEC/UAL Level 3 Extended Diploma/Diploma/Subsidiary Diploma/Certificate [RQF]
- BTEC National Award/Certificate/Diploma [NQF]
- Access to Higher Education Diploma
- International Baccalaureate
- AQA Baccalaureate
- Progression Diploma
- Advanced Diploma
- You will also need GCSE English at grade C (old specification) or Grade 4 (new specification) or above OR a Level 2 equivalent such as functional skills
- Portfolio based interview



First year drawing workshop



Image credit: Olivia Inskip



# HNC General Engineering

**Campus:** Thurrock

**UCAS Code:** 35147

**Cost per year:** £3,250



## Introduction

This is the perfect programme if you aspire to specialise in engineering. You will learn in an industry-standard environment with industry trained tutors.

Our Higher National Certificate course offers a

good balance of academic theory and practical industry knowledge which is firmly aligned to your job requirements from day one. Through high-quality lectures, case study research and employer-based projects you will gain a unique blend of general

skills along with specific industry knowledge in the field of engineering.

The ability to study part-time alongside your job, allows you to gain an industry-recognised qualification that is accepted around the world.

# What's covered?

This programme is offered part-time so you can work in the engineering industry alongside your studies. You will be in college one day per week, and we can liaise with your employer to help shape the course to meet your needs. In the second year there is a work-based project, so you can study a topic that supports your career progression and your employer. Currently we have students from a range

of companies including Procter and Gamble.

The course is assessed through coursework. You will complete assignments that focus on the practical application of the assessment criteria, providing a realistic scenario for you to adopt, making maximum use of work-related practical experience and reflecting typical practice in industry. The HNC is graded pass, merit or distinction.

Practical assignments enable the manufacture of products. You will also engage in simulated virtual environments to assess how you engage with practical requirements.

## Contact hours

- One day per week, 9am until 5pm
- This programme is running on Wednesdays (Year1) & Thursdays (Year 2)



## "You will learn in an industry-standard environment"

### Industry links

- P & G
- Britvic
- Unilever
- Ipeco
- Kingspan
- Laing O'Rourke
- Leitz Tooling UK, Harlow
- Upfield Foods
- LUMA Engineering
- Protocon Engineering
- Power Testing
- Waverley Brownall

- UPS Ltd.
- Allied bakery
- ADM Pura
- XCEL Aerospace

### What can I do after this?

Following graduation from the HNC, you are eligible to progress onto a Higher National Diploma (HND) or onto a full degree programme.

### Additional costs

You are required to bring your own personal protective equipment (PPE). However, the College will provide tools and there are no additional costs.

### Graduate destinations

Previous students have progressed to study at Greenwich University and the Open University.

### Key features

- Industry-recognised qualification
- High-quality lectures, case study research and employer-based projects



---

### Entry Requirements

You will need a minimum of 64 UCAS points from one or more of the following:

- BTEC Level 3 Engineering
- AVCE/GNVQ in a related vocational area (Level 3)
- A-levels in maths and science subjects
- A related Access to Higher Education Certificate or other related Level 3 qualifications
- Related work experience supported by GCSEs at grades 9-4 (A\*\*-C) or equivalent
- You will also need GCSE English and GCSE Maths at grade C (old specification) or grade 4 (new specification) or above OR a Level 2 equivalent such as functional
- Interview required

**"Through high-quality lectures, case study research and employer-based projects you will gain a unique blend of general skills along with specific industry knowledge in the field of engineering."**



# BA (Hons) Graphic Design

**Campus:** Southend

**UCAS Code:** W210

**Cost per year:** £8,000

This degree is validated\* by the  
**University of the Arts London**

**ual:**

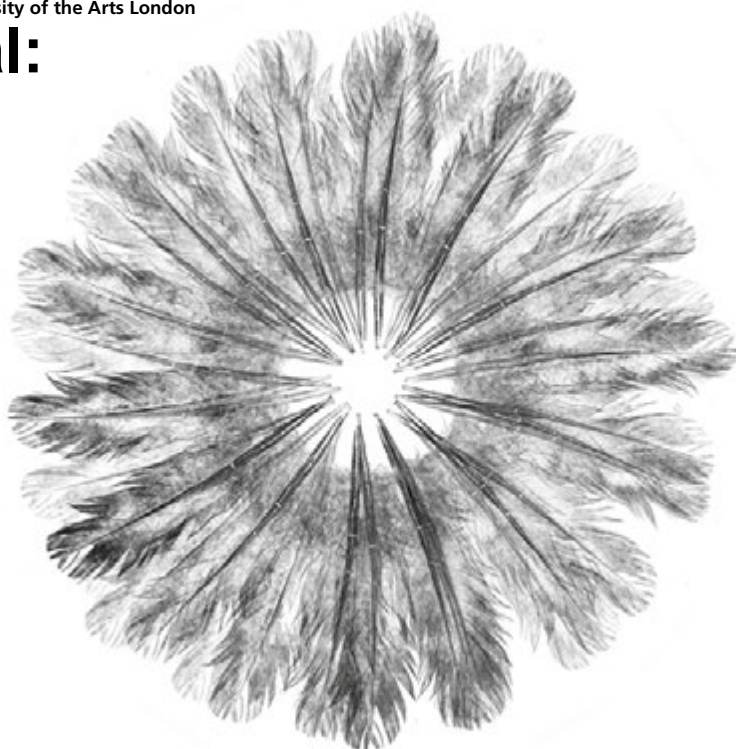


Image credit: Ellise Collins

\* This course is subject to revalidation. Revalidation is a process that makes sure students get a high quality academic experience. During revalidation there may be some changes to course content. We are proposing to launch a new Illustration pathway as part of this degree from September 2020, however this is subject to the usual validation process. Please contact us if you have any questions about this course.

## Introduction

This programme treats the various subject areas within design not as discrete disciplines but as interweaving lines of enquiry. Because of this, we use a unit structure which encourages individual creativity.

Our strength is in our determination to provide you with a pro-active, creative atmosphere, which looks at and responds to current and future trends in the industry. We run a small tight-knit course of around twenty students

in each year. This allows us to really get to know you and ensures that you in turn, will always have a tutor available to discuss your practice.



# What's covered?

## Year one

- Introduction to graphic communication
- Historical and contextual studies
- Illustration
- Digital design solutions
- Typography
- Alternative media & thinking



## Year two

- Experimental design solutions
- Corporate ID & branding
- Graphic design in three dimensional contexts
- Self-directed project
- Literature review and dissertation proposal
- Work placement

## Year three

- Dissertation
- Industry-led brief
- Subject realisation
- Professional promotion

---

**"Providing you with a pro-active, creative atmosphere"**

---

## Industry links

Because our staff are practicing in various areas of design, strong and progressive links with industry are integrated within the course structure.

Live projects and briefs have been set by leading practitioners, companies and publications in recent years, including leading advertising agency Ogilvy Mathers, Kew Gardens and Universal Studios.

## Exposure

Visibility is essential and you are strongly encouraged to organise, host and promote your work through static exhibitions (locally and nationally), digital platforms (websites, blogs) and end of year shows.

You are encouraged to visit design studios and speak with employers about their work prior to graduation. Previously, the course has invited industry leaders to attend portfolio surgeries to select students for placement.

## Work placements and live briefs

Year two has a work placement unit which supports you in securing a 60 hour placement. This is followed in year three by a unit focusing on your own professional promotion as you prepare to enter the workplace.

## Field trips

There are several fields trips to support your learning studies including: design agencies and the Design Museum in London.

---

### Key features

- Live projects and briefs
- You will work in a pro-active, creative atmosphere

## Graduate destinations

Many of our graduates find employment with design studios or set up as freelance designers or illustrators for design studios, advertising agencies, publishing houses, printing firms or web and digital design studios. Others choose

to further their studies through postgraduate education. The positive atmosphere on the programme often results in some of our graduates starting their own graphic design studios such as award-winning local design studio, Six Red Squares.

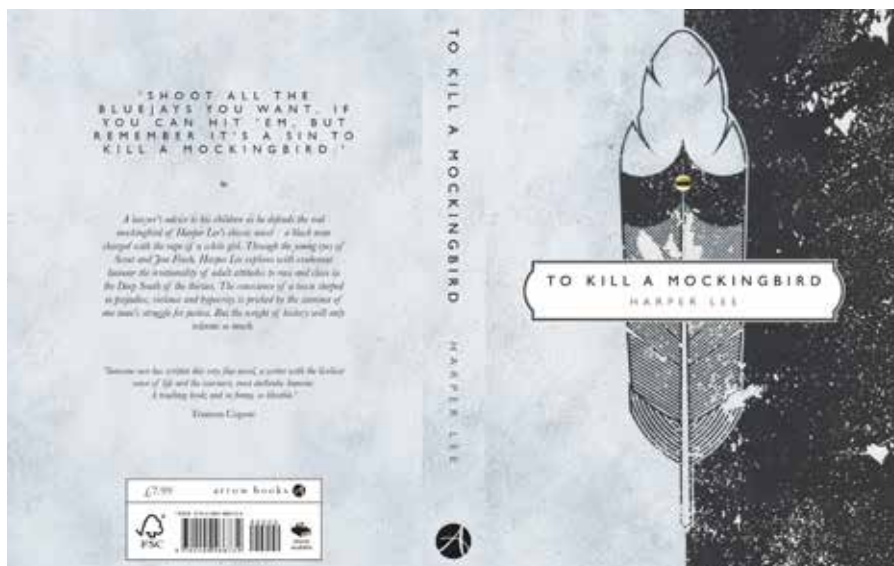


Image credit: Mark Nevard

## Entry Requirements

You will need a minimum of 64 UCAS points from one or more of the following:

- At least two A-levels
- BTEC/UAL Level 3 Extended Diploma/Diploma/Subsidiary Diploma/Certificate [RQF]
- BTEC National Award/Certificate/Diploma [NQF]
- Access to Higher Education Diploma

- International Baccalaureate
- AQA Baccalaureate
- Progression Diploma
- Advanced Diploma
- You will also need GCSE English at grade C (old specification) or Grade 4 (new specification) or above OR a Level 2 equivalent such as functional skills
- Portfolio-based interview

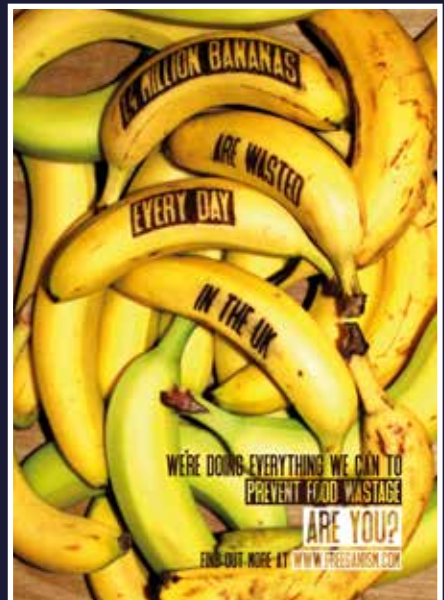


Image credit: Samuel Jones

Image credit: Joe Stevens



Image credit: Mark Nevard



# BA (Hons) Interior Design

**Campus:** Southend

**UCAS Code:** W250

**Cost per year:** £8,000



Image credit: Christina Bhairo

\*This course is subject to revalidation. Revalidation is a process that makes sure students get a high quality academic experience. During revalidation there may be some changes to course content. Please contact us if you have any questions about this course.

## Introduction

Interior design is an exciting and rewarding career and there are a huge range of career opportunities within the industry. You will be introduced to industry CAD software and industry processes which will include using Photoshop,

SketchUp, AutoCAD, InDesign, working on live projects, undertaking work experience opportunities and taking part in interesting visits. This course offers strong industry links with a programme of exciting 'live' projects and work placements.

You will be able to explore these job opportunities and find your place within the industry whilst working on projects of your own choice. The course covers a range of interior design such as residential, hospitality design and commercial interiors.

# What's covered?

By joining the course, you will become part of our interiors team, which is a unique and supportive learning environment. We have a maximum of 20 student places available per year group, which allows more contact time with all students.

Our course team are industry professionals who practise as freelance interior designers.



## Year one

- Interior design process
- Historical and contextual studies
- Design drawing
- Technical drawing/ CAD 1
- Construction technology
- Interior design studies

## Year two

- Exhibition design
- Technical drawing/ CAD 2
- Professional promotion
- Retail design
- Cultural contexts and dissertation proposal
- Work placement

## Year three

- Dissertation
- Subject realisation
- Professional promotion

---

## "Strong industry links with a programme of exciting 'live' projects"

---

### Work placement

In year two there is a work placement unit where you can identify the area of interior design that suits you best and we help you secure a placement to gain further industry experience to support your studies.

### Live projects and industry links

We promote industry awareness as much as possible on the course to enable students to be completely prepared for starting their career in the industry.

### Trips

Students benefit from a wide range of trips including: Exhibitions and design studios in London

### What can I do after this?

You can progress to postgraduate study including:

- Interior design
- Interior and spatial design
- Architectural interior design

---

### Key features

- Run by a team of interior designers
- Students learn drawing, sketching and 3D model making and CAD



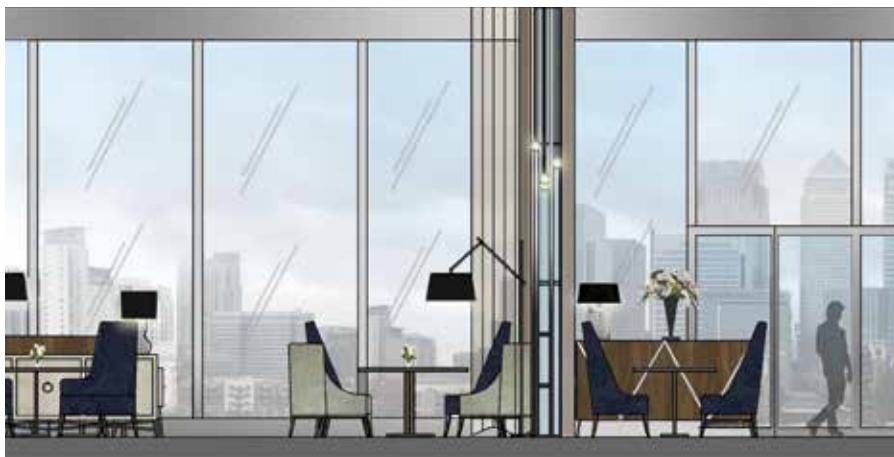
## Graduate destinations

The great majority of students progress into industry following graduation, including:

- Junior designers progressing to midweight designers in a range of industries including residential, retail and leisure
- Prestigious international design companies

## Industry Links

- G1 Architecture
- Howden Kitchens
- Fiducia interiors, London



## Entry Requirements

You will need a minimum of 64 UCAS points from one or more of the following:

- At least two A-levels
- BTEC/UAL Level 3 Extended Diploma/Diploma/Subsidiary Diploma/Certificate [RQF]
- BTEC National Award/Certificate/Diploma [NQF]
- Access to Higher Education Diploma
- International Baccalaureate
- AQA Baccalaureate
- Progression Diploma
- Advanced Diploma
- You will also need GCSE English at grade C (old specification) or Grade 4 (new specification) or above OR a Level 2 equivalent such as functional skills
- Portfolio based interview



# HND Performing Arts (Acting Pathway)

**Campus:** Southend

**UCAS Code:** H882

**Cost per year:** £7,000



## Introduction

This course offers strong industry links with a programme of exciting 'live' projects and opportunities for work placements which often result in job offers at the end of the programme.

This course will help you gain the skills you need to become a versatile and creative performance practitioner, able to work in a wide range of fields within the industry, from performer to artistic director, arts administrator to pedagogogue. Our holistic

approach is designed to prepare you to enter the performance industry having developed a broad skills base through practical training in various disciplines. You will have opportunities to engage with a variety of external performance practitioners.

# What's covered?

## Year one

- Creative arts professional practice
- Development of acting skills
- Innovative theatre performance
- Physical theatre performance
- Voice and speech development & practice

## Year two

- Alternative approaches to acting
- Applied contemporary performance practice
- Preparation, process and production in creative arts
- Research project
- Theatre directing



**"Work in a wide range of fields within the industry, from performer to artistic director"**

## Graduate destinations

Many graduates progress to further academic study and performance training. Some have also taken up teaching by embarking on the PgCE programme offered here at South Essex College University Centre.

Other graduate destinations include:

- One of our graduates is working in London with the internationally-renowned community theatre company Chicken Shed

- Another acting graduate is currently touring Italy as a T.I.E performer with Theatrino Educo
- Two of our acting graduates have successfully set up their own theatre company, performing their first show in June 2017 at The Hen & Chickens venue in Islington

## Field trips

You will benefit from industry-related work experiences including overseas performance projects such as travelling to Italy to work with internationally-acclaimed theatre company Teatro dei Borgia.



## Key features

- Training in various disciplines
- Work with internationally-acclaimed theatre company Teatro dei Borgia



## Entry Requirements

You will need a minimum of 64 UCAS points from one or more of the following:

- At least two A-levels
- BTEC Level 3 Extended Diploma/Diploma/Subsidiary Diploma/Certificate [RQF]
- BTEC National Award/Certificate/Diploma [NQF]
- Access to Higher Education Diploma
- International Baccalaureate
- AQA Baccalaureate

- Progression Diploma
- Advanced Diploma
- You will also need GCSE English at grade C or above (old specification) or grade 4 (new specification) OR a Level 2 equivalent such as functional skills

## Audition requirements

You will be asked to perform a two-minute monologue or present a concept pitch for a directing project, which you will have prepared in advance of the audition. **NB:** if choosing to perform a monologue, the piece you select should be from a published play.

Your practical audition will be followed by an interview with the course team. You will also need to provide an example of some written academic work.





# HND Performing Arts (Dance Pathway)

**Campus:** Southend

**UCAS Code:** 4B22

**Cost per year:** £7,000



## Introduction

This course is designed to be vocationally driven with a focus on strong industry links delivered through a programme of exciting 'live' projects working with current external professional choreographers.

You will work as a member of the in-house dance company developing your skills base through levelled classes in all genres. You will also have the chance to nurture your own creative voice through choreographic projects aimed at preparing you

for the varied employment opportunities within the industry. Our holistic approach and company ethos will ensure that you enter the industry having developed a broad skills base through practical training in various disciplines.

# What's covered?

## Year one

- Performing arts industry
- Professional development
- Jazz dance 1
- Ballet 1
- Contemporary 1
- Commercial dance
- Tap 1
- Choreography

## Year two

- Creative research project
- Working in the performing arts industry
- Jazz dance 2
- Contemporary 2
- Commercial dance 2
- Choreography 2
- Performance project



**“Work in a wide range of fields within the industry, from performer to artistic director”**

## Graduate destinations

Many graduates progress to further academic study and performance training. Some have also taken up teaching by embarking on the PgCE programme offered here at South Essex College University Centre.

Other graduate destinations include:

- One of our graduates is currently performing as a dancer at Disneyland Paris
- One is a backing dancer for the X-Factor and has performed at the BRIT Awards
- One of our HND graduates has set-up her own company creating showreels and headshots for performers and has completed her top-up year

## Field trips

Field trips include overseas performance projects such as travelling to Italy to work with internationally-acclaimed theatre company Teatro dei Borgia. You will also visit London to watch performances in fringe venues and larger institutions such as Sadler's Wells and the Royal Opera House.

## Workshops

with practitioners such as: Joss Arnott Company, Joseph Toonga (Just Us Dance Theatre) and Avant Garde Dance.

## Key features

- Training in various disciplines
- Work with internationally-acclaimed theatre company Teatro dei Borgia



## Entry Requirements

You will need a minimum of 64 UCAS points from one or more of the following:

- At least two A-levels
- BTEC Level 3 Extended Diploma/Diploma/Subsidiary Diploma/Certificate [RQF]
- BTEC National Award/Certificate/Diploma [NQF]
- Access to Higher Education Diploma
- International Baccalaureate

- AQA Baccalaureate
- Progression Diploma
- Advanced Diploma
- You will also need GCSE English at grade C or above (old specification) or grade 4 (new specification) OR a Level 2 equivalent such as functional skills

## Audition requirements

You will participate in two dance classes of contrasting genres before presenting a solo of your own choice (between 1 ½ - 2 minutes in length). The practical sessions will be followed by an interview with the course team. You will also need to provide an example of some written academic work.



**“You will work as a member of the in-house dance company developing your skills base through levelled classes in all genres.”**





# BA (Hons) Photography

**Campus:** Southend

**UCAS Code:** W642

**Cost per year:** £8,000

This degree is validated\* by the  
**University of the Arts London**

**ual:**

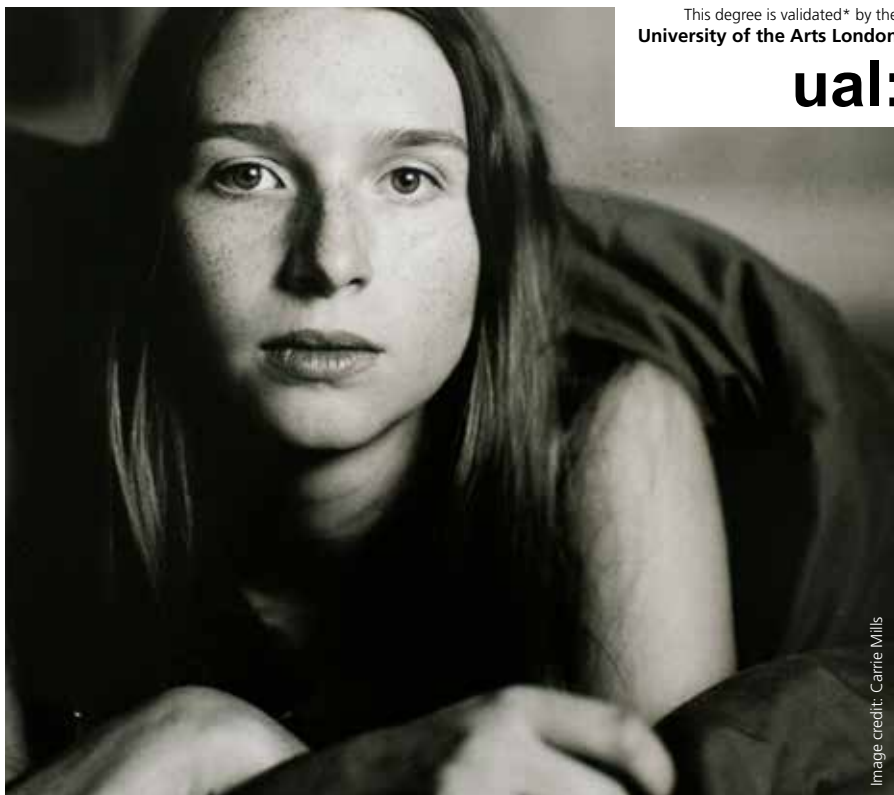


Image credit: Carrie Mills

\*This course is subject to revalidation. Revalidation is a process that makes sure students get a high quality academic experience. During revalidation there may be some changes to course content. Please contact us if you have any questions about this course.

## Introduction

This programme is designed to provide you with the skills, knowledge and experience to become a highly skilled, creative and distinctive professional photographer.

The programme covers

a range of genres, approaches and contexts.

Talented and skilled photography graduates are continually sought to provide the industry and fine art sectors with fresh ideas, new perspectives and innovative approaches

to creative problem solving in visual communication. You will engage with experienced lecturers who come from a wide range of creative and professional disciplines who will enable you to develop your own personal ideas.

# What's covered?

## Year one

- Explore and experiment
- Visual persuasion
- Fashion and identity
- Photojournalism and documentation
- Cinema and the constructed image
- Historical and contextual studies

## Year two

- Professional studies
- Sound and vision
- Time and memory
- Professional development project
- Work placement
- Cultural contexts and dissertation proposal

## Year three

- Refinement of photographic intentions
- Subject realisation
- Dissertation
- Professional development and portfolio

## Contact hours

13 hours per week, over two and a half days in years one and two, and over two days in year three.



**"Become a highly skilled, creative and distinctive professional photographer"**

## Work placement

Units in years two and three support your continuous professional development, helping you learn about the industry, key legislation, interpreting creative briefs, negotiating fees & expenses, copyright, client-photographer relations, freelance business and promotional skills, as well as individual planning and preparation for career progression.

## Exhibitions

The College has a permanent gallery space and students have the opportunity to organise and participate in exhibitions in preparation for the final year exhibition at venues in London.



- Key features**
- Shoot in both digital and analogue
  - Covers a range of genres, approaches and contexts

### Field trips

You will have the opportunity to engage with numerous field trips, including The Photographer's Gallery, Saatchi Gallery, Michael Hoppen Gallery, National Portrait Gallery Tate Modern and many more.

### Additional costs

In addition to the course fees, there will be other costs associated with studying on the programme.

### Graduate destinations

Previous graduates are working for magazines, photo libraries, within the fashion industry, press and music industry and events. Many graduates also set-up their own successful businesses. Employers include the NHS and Bonhams auctioneers.

Following the degree, you may also wish to study at postgraduate level.



### Entry Requirements

You will need a minimum of 64 UCAS points from one or more of the following:

- At least two A-levels
- BTEC/UAL Level 3 Extended Diploma/Diploma/Subsidiary Diploma/Certificate [RQF]
- BTEC National Award/Certificate/Diploma [NQF]
- Access to Higher Education Diploma
- International Baccalaureate
- AQA Baccalaureate
- Progression Diploma
- Advanced Diploma
- You will also need GCSE English at grade C (old specification) or Grade 4 (new specification) or above OR a Level 2 equivalent such as functional skills
- Portfolio-based interview



# PgCE Professional graduate Certificate in Education (FE and Skills Sector)

---

**Campus:** Southend

**Course Code:**

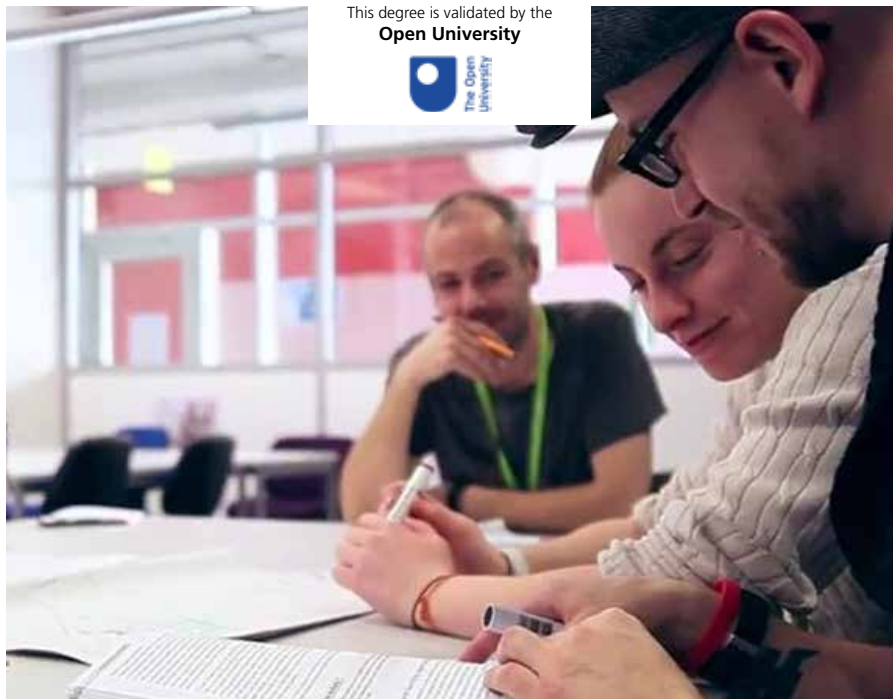
Part time: 5617

Full time: 80046

**Cost per year:**

Part time: £2,750

Full time: £7,750



This degree is validated by the  
**Open University**



**To apply visit:** [southessex.ac.uk/pgce](https://southessex.ac.uk/pgce)

---

## Introduction

The Professional graduate Certificate in Education (Further Education and Skills Sector) is a Level 6 teaching qualification which has a teaching/training practice requirement.

This course is ideal if you work, or want to work as a teacher or trainer in the further education and skills sector, if you are in or want to start a career in a teaching or training role; if you are a teacher or trainer who is seeking career progression in

your area of work. This programme is a recognised Full Teacher Training qualification, eligible for QTLS application upon completion.



# What's covered?

A variety of teaching strategies are used, such as group interaction, paired and individual work, one-to-one seminars, guest speakers, support from subject specialist mentors and regular tutorial input. A range of interactive technologies are taught and are available for use by trainees.

## Part-time programme

- Study four modules per year, eight modules across the two year programme
- One evening per week in college

## Full-time programme

- Study eight modules in one year
- Two days in college, two on placement

## Modules

- Principles of teaching and learning
- Developing teaching and learning
- Behaviour management
- Enabling learning by assessment
- Theories and principles in pedagogy
- Developing resources for inclusive practice
- Wider professional practice
- Action research project



## "Support from subject specialist mentors and regular tutorial input"

### What can I do after this?

After completion of the course you will be able to apply for Qualified Teacher: Learning and Skills status (QTLS). QTLS is equivalent to but distinct from QTS (Qualified Teacher Status for ages 5-11 or 11-18 in schools).



- Key features**
- One-to-one seminars
  - Option to study full or part-time

## Entry Requirements

- Hold an honours degree or equivalent. We use the UK NARIC (National Academic Recognition Information Centre) guidelines to make international comparisons
- Hold GCSE Maths and English at C / 4 grade or above, or equivalent numeracy or literacy at Level 2, such as Functional Skills, Learn direct etc – Evidence of this will be required during the application cycle
- We will consider applicants holding overseas qualifications that are equivalent to those described above
- A minimum of 100 hours of teaching across the duration of the course (50 hours across each year of study for part-time) during which you have full responsibility for planning, delivering and assessing specific area/s of the institution's provision. The placement should be within a local school teaching 14-plus students, a local sixth-form teaching post-16 learners or a local college teaching post-16 or adult learners
- A mentor in the workplace who is a qualified teacher/lecturer (i.e. PgCE) and where possible is a subject specialist in the same area as the trainee teacher. A completed Teaching and Mentor Hours form from your workplace which you will be provided with prior to our diagnostic event to confirm both of the above
- A 500-word written piece, prescribed following application and returned to the ITE team prior to or at interview (for details please contact **ITETeam@southessex.ac.uk**)

- Satisfactory initial assessment in literacy and maths. Applicants are expected to achieve a score of 50% in order to be made an offer onto the course
- Work placements within an educational or community environment will require an enhanced DBS check

### Additional Entry requirements – Part-time

You must be working in a paid educational position.

### Additional Entry requirements – Full-time

You must secure a suitable teaching placement. Whilst the ITE team will give advice on how to apply for positions we do not provide you with a teaching placement. It is the responsibility of the prospective trainee to arrange their own placement.





# BSc (Hons) Psychology & Sociology

**Campus:** Southend

**UCAS Code:** L340

**Cost per year:** £8,000



This degree is awarded by the  
**University of East Anglia**

**UEA** University of  
East Anglia

## Introduction

This course is ideal if you want to enhance your knowledge and understanding of human behaviour and society.

The programme provides you with the ability to apply theory, concepts

and ideas across both psychological and sociological disciplines.

It is specifically designed to use applied research to understand the world and human behaviour across the lifespan.



# What's covered?

## Year one

- Foundations of psychology
- Classical and contemporary sociology
- The individual and society
- Introducing research methods in psychology and sociology
- Work-related skills in social sciences

## Year two

- Qualitative and quantitative research
- Social division and inequalities
- Developmental psychology
- Social psychology
- Work related practice
- Social policy

## Year three

- Final major project (dissertation)
- Psychology of mental health and mental disorders
- Health psychology
- Current issues and trends in contemporary society
- Sociology of crime and deviance

## Contact hours

13-14 hours per week, comprising:

The contact hours include a combination of taught and practical sessions, in addition to workshops and debates.



**“Enhance your knowledge and understanding of human behaviour and society.”**

## Guest speakers

- Iain Banks (Southend Borough Council)
- Emma Goddard (Restorative and Mediation Services Development Manager Essex Police)
- Itayi Garande (International lawyer)
- Jacki Simpson (Volunteering Matters)

## Workshops & Trips

- Deaf Awareness
- Safeguarding training
- Bethlem Museum of the Mind
- Dementia friends training
- Psychology of advertising (mood board picture right)
- The Queen Elizabeth Olympic Park



## Key features

- High quality guest speakers
- Designed to use applied research to understand the world around us



## Graduate destinations

Graduates have gone on to careers such as education, research (Office for National Statistics), project management and support workers. Students have also entered Masters Qualifications in Psychology, Social Work, Fashion Psychology, Mental Health, Clinical and Forensic Psychology. Graduates have also undertaken teacher

training and have achieved either QTS or QTLS, enabling them to take up roles in mainstream schools.

Graduates wishing to progress in psychology can undertake a British Psychological Society (BPS) conversion award through an accredited institution which will provide an opportunity to become eligible for

the Graduate Basis for Chartered Membership (GBC). By gaining this, you will be eligible to apply for a place on a society-accredited postgraduate training programme and in time progress to gaining Chartered Membership (CPsychol) of the Society. Your programme leader will be able to advise of accredited programmes.



Image credit: Bethlem Museum of the Mind

## Entry Requirements

You will need a minimum of 64 UCAS points from one or more of the following:

- At least two A-levels
- BTEC Level 3 Extended Diploma Diploma/Subsidiary Diploma/Certificate [QCF]
- BTEC National Award/Certificate Diploma [NQF]
- International Baccalaureate
- International Baccalaureate
- Access to Higher Education Diploma 30 credits at Merit/Distinction
- You will also need GCSE English and maths at grade C (old specification) or Grade 4 (new specification) or above OR a Level 2 equivalent such as functional skills



# BA (Hons) **Special Educational Needs & Disability Studies**

**Campus:** Southend

**UCAS Code:** X161

**Cost per year:** £8,000



## **Introduction**

This programme is ideal if you want to progress to teaching, social work or management in the special education and social care sectors. It will give you the skills and knowledge you need to create safe, stimulating and supportive

learning environments. This degree will ensure that you become familiar with theoretical and legislative knowledge and possess the skills required to be able to work in a variety of educational and care settings. You will be able to support

people with specific needs (including learning disabilities, physical disabilities and mental health issues) and embark on a work placement that is central to the course.

# What's covered?

## Year one

- Introduction to theoretical perspectives in education and disability studies
- Legislation and policy for SEND
- Introduction to specific needs
- Policies and procedure in workplace settings
- Effective working practices



## Year two

- Identifying and supporting individual needs
- Specific needs
- Developing and delivering learning support programmes
- Case study
- Educational inquiry

## Year three

- Workplace-based project
- CPPD
- Practice and innovation in supporting SEND
- Mental health
- Protection and vulnerability

---

**"Gives you the knowledge you need to create safe, stimulating and supportive learning environments"**

---

## Work placement

You will be at your work placement a minimum of one day per week between 9am and 4pm. You will need to have secured a placement by the October half-term.

## Guest speakers

The programme features a number of industry and sector-specific professionals.

## Field trips

You will benefit from several optional specialist field trips.



- 
- Key features**
- Work placement
  - The practical and theory are inter-related

## What can I do after this?

Possible career routes include teaching in primary schools, special needs schools and the post-compulsory sector. Graduates go on to teach in schools designated for children with mild and severe learning disabilities, or manage special units, community care centres or training centres. This degree also prepares you for employment in a wide range of other social care or educational settings.

You can pursue further study at postgraduate level or continue in vocational training at another institution.

## Graduate destinations

Previous graduates have gone on to the Primary SCITT programme and then into teaching or have studied for a PgCE and then taught in the lifelong learning sector. Some have done a Masters in Social Work and Social Work Practice or have pursued careers in mental health, care management, student support services, pastoral management, managed behavioural units, worked in a pupil referral unit and in some cases where an Early Years practitioner qualification (level 3) has been held have been employed in an Early Years (0-5 years) SEND role.

Recent graduates have taken up management positions in special needs schools, whilst another now manages a children's unit.



---

## Entry Requirements

You will need a minimum of 64 UCAS points from one or more of the following:

- At least two A-levels
- BTEC Level 3 Extended Diploma Diploma/Subsidiary Diploma/Certificate [QCF]
- BTEC National Award/Certificate Diploma [NQF]
- International Baccalaureate
- International Baccalaureate
- Access to Higher Education Diploma 30 credits at Merit/Distinction
- You will also need GCSE English and maths at grade C (old specification) or Grade 4 (new specification) or above OR a Level 2 equivalent such as functional skills







**"Ideal if you want to progress to teaching, social work or management in the special education and social care sectors."**

# Access courses

We offer a range of Access to Higher Education (HE) courses that are designed to prepare adults for study at university level.

These courses are ideal if you have been out of education for some time, especially if you left school with too few qualifications to be able to go straight to university. They provide a good foundation in the knowledge and skills required for studying at university level, so that you will be confident and well prepared to go on to higher education.



## **Access to Higher Education (Art and Design) Level 3 Diploma**

**Campus:** Southend

**Course code:** 1175

**Cost:** £3,000

### **Why should I do this course?**

This course is for those who would like to progress to a higher education programme in a wide variety of art and design degree programmes e.g. the Fine Art BA (Hons) but need to gain the required entry qualifications and skills.

### **What can I do when I finish this course?**

On successful completion of the course, and on acceptance at interview, you will be able to progress to higher education programmes at universities across the country; including our own wide range of honours degrees validated by University of the Arts London and delivered at the South Essex College University Centre.



### **Access to Higher Education (Business Management) Level 3 Diploma**

**Campus:** Southend  
**Course code:** 5531  
**Cost:** £3,000

#### **Why should I do this course?**

This course is for those who would like to progress to a higher education programme in Business, such as the Accounting and Finance BSc (Hons) or Business and Entrepreneurship BA (Hons), but need to gain the required entry qualifications and skills.

#### **What can I do when I finish this course?**

You can progress onto degree programmes at college or university, including our Accounting and Finance BSc (Hons) or Business and Entrepreneurship BA (Hons) degree programmes at the South Essex College University Centre.



### **Access to Higher Education (Counselling) Level 3 Diploma**

**Campus:** Southend  
**Course code:** 5291  
**Cost:** £3,000

#### **Why should I do this course?**

This course is for those who would like to progress to a higher education programme in Counselling, such as the Counselling BA (Hons), but need to gain the required entry qualifications and skills.

#### **What can I do when I finish this course?**

You can progress to higher education programmes at college or university, including our BA (Hons) Counselling degree programme at the South Essex College University Centre.



### **Access to Higher Education (Early Years) Level 3 Diploma**

**Campus:** Southend  
**Course code:** 20363  
**Cost:** £3,000

#### **Why should I do this course?**

This course is for those who would like to progress to a higher education programme in Early Years such as the Early Years BA (Hons), but need to gain the required entry qualifications and skills.

#### **What can I do when I finish this course?**

You can progress to higher education programmes at college or university to study a range of subjects including our BA (Hons) Early Years degree programme at the South Essex College University Centre.



### **Access to Higher Education (Forensics and Criminology) Level 3 Diploma**

**Campus:** Southend  
**Course code:** 20314  
**Cost:** £3,000

#### **Why should I do this course?**

This course is for those who would like to progress to a higher education programme in Forensics or Criminology such as the Criminology and Forensic Investigation BSc (Hons), but need to gain the required entry qualifications and skills.

#### **What can I do when I finish this course?**

You can progress to college or university to study a range of pathways including criminology, police studies, forensic investigation and social sciences, including our BSc (Hons) Criminology and Forensic Investigation programme here at the South Essex College University Centre.



### **Access to Higher Education (Nursing and Midwifery) Level 3 Diploma**

**Campus:**  
Southend or Thurrock  
**Course code:** 1178  
**Cost:** £3,000

#### **Why should I do this course?**

This course is for those who would like to progress to a higher education programme in Nursing, Midwifery or other health-related subject, but need to gain the required entry qualifications and skills.

#### **What can I do when I finish this course?**

You can progress to health-related higher education programmes at university or college, including nursing, midwifery and the allied health professions such as occupational therapy. If you would like to study paramedic sciences you will need to enrol on the Access to Science course.



### **Access to Higher Education (Science) Level 3 Diploma**

**Campus:**  
Southend or Thurrock  
**Course code:** 1182  
**Cost:** £3,000

#### **Why should I do this course?**

This course is for those who would like to progress to a higher education programme in science such as Biomedical Science (Hons) degree course, but need to gain the required entry qualifications and skills.

#### **What can I do when I finish this course?**

You can progress to higher education programmes at university or college, including our BA (Hons) Criminology and Forensic Investigation degree programme at South Essex College University Centre. Other common degree pathways include: Veterinary Science, Paramedic Science, Physiotherapy, Environmental Science, Podiatry or Sports Science.



### **Access to Higher Education (Social Studies) Level 3 Diploma**

**Campus:** Southend  
**Course code:** 1179  
**Cost:** £3,000

#### **Why should I do this course?**

This course is for those who would like to study on a higher education programme in social studies such as the Psychology and Sociology BSc (Hons) degree programme at South Essex College University Centre, but need to gain the required entry qualifications and skills.

#### **What can I do when I finish this course?**

You can progress to higher education programmes at university or college to study programmes in areas such as Psychology, Sociology or Social Work, including our BSc (Hons) Psychology and Sociology degree programme at the South Essex College University Centre.



### **Access to Higher Education (Sport Science) Level 3 Diploma**

**Campus:** Southend  
**Course code:** 55137  
**Cost:** £3,000

#### **Why should I do this course?**

This course is for those who would like progress to study on a higher education programme in Sport such as the Sport Studies BA (Hons), but need to gain the required entry qualifications and skills.

#### **What can I do when I finish this course?**

You can progress to college or university to study a range of pathways including, sports science, sports studies, physiotherapy, including our Exercise, Health & Sports Performance BSc (Hons) degree programme at the South Essex College University Centre.



### **Access to Higher Education (Teaching) Level 3 Diploma**

**Campus:** Southend  
**Course code:** 1176  
**Cost:** £3,000

#### **Why should I do this course?**

This course is for those who would like to progress to a higher education programme in teaching or education but need to gain the required entry qualifications and skills.

#### **What can I do when I finish this course?**

You can progress to higher education programmes at university or college, including our Early Years BA (Hons) degree programme at South Essex College University Centre.



# Entry requirements

## What are the entry requirements for higher education?

Entry requirements for specific courses are explained with the course details in this prospectus and are available on the website on the individual course listing pages at **[www.southessex.ac.uk/coursefinder?he=1](http://www.southessex.ac.uk/coursefinder?he=1)**

You will be expected to possess:

- GCSE English Language grade C (old specification) or grade 4 (new specification) or above or equivalent such as Functional Skills in English Level 2 (all programmes of study)
- GCSE maths grade C (old specification) or grade 4 (new specification) or above or equivalent such as Functional Skills in Maths Level 2 (selected programmes of study)

If you would like to discuss your eligibility before submitting a formal application, please contact our Course Adviser Team at **[courseadvisers@southessex.ac.uk](mailto:courseadvisers@southessex.ac.uk)**

## Statement on qualification reform from 2017 entry onwards

The College has considered reforms to the UK qualifications in relation to our Undergraduate Admissions Policy and our entry requirements. We recognise that schools and colleges will face challenges over the next few years; as a result, we will continue our approach of being flexible in our offer-making and do not plan to introduce any major changes to our standard conditional offer levels from 2017 entry onwards.

We will continue to consider applications in an individual and holistic way. We will continue to take all aspects of the UCAS application into consideration, in line with our Higher Education Admissions Policy: **[www.southessex.ac.uk/higher-education/higher-education-policies](http://www.southessex.ac.uk/higher-education/higher-education-policies)**

Under the new GCSE structure we plan to equate a mark of 4 in the new GCSE to the current grade C.

Where possible, we encourage referees to provide a link in the UCAS Reference to the information on their school or college's policy in respect of what qualifications and subject areas they are offering. The College will continue to monitor and review the impact of the qualification reforms and may update our admissions policy accordingly in the future.

If you would like further advice about specific qualifications and whether they will be considered please do not hesitate to contact us by email **[HEadmissions@southessex.ac.uk](mailto:HEadmissions@southessex.ac.uk)**

## Are the requirements the same for mature applicants?

UCAS provides useful tailored information about university study: **[www.ucas.com/students/wheretostart/maturestudents](http://www.ucas.com/students/wheretostart/maturestudents)**

If you have already started a higher education course at another college or university and wish to transfer, we are happy to consider your application on the basis of qualifications obtained elsewhere. The College works within the

guidelines of the structures of the European Credit Transfer System (ECTS).

Please contact **headmissions@southessex.ac.uk** in the first instance to discuss further before making an application.

They will arrange for a tutor from the relevant course to contact you to discuss your individual situation before you formally apply.

### **Access to Higher Education Diplomas**

The College offers Access courses for mature students who have the potential to study for a degree but do not have the relevant entry qualifications. This one year qualification will help you develop the knowledge, skills and confidence needed for degree level study even if you've been out of education for a long time. Access Diplomas are recognised across the UK and Access students are often high achievers who progress to exciting new careers.

We offer Access to Higher Education Diplomas in a variety of subjects.

Read more at **www.southessex.ac.uk/Access**

### **What are the entry requirements for international students?**

If English isn't your first language, you will need to show that you have a recognised English language qualification. Entry requirements for international students can be found on our website at: **www.southessex.ac.uk/higher-education/entry-requirements**

Please note if you require Tier 4 Visa sponsorship, English language criteria is detailed at: **www.gov.uk/tier-4-general-visa/knowledge-of-english**

If you would like to discuss your eligibility before submitting a formal application, please contact our International Team on **01702 220400** or via email at **international@southessex.ac.uk** or **HEadmissions@southessex.ac.uk**

### **Where do I get information on visas and immigration?**

Please see the UKCISA website and the British Council website. Both organisations produce useful information and guidance that will assist you in applying for a visa and help prepare you for life in the UK.

Read more at: **www.southessex.ac.uk/international**

### **Exceptional Entry**

Some of our courses offer entry to mature students if they don't meet the entry requirements but do possess related professional experience or professional qualifications.

You will need to demonstrate by interview, exceptional entry portfolio (this is likely to include evidence of paid or unpaid work experience) and/or written assessment that you are suitable for the course.

In the first instance we suggest you email **HEadmissions@southessex.ac.uk** to discuss your application

### **Portfolio requirements**

You will be required to show a portfolio that demonstrates a high level of visual skill, creativity, commitment, and self-motivation. You need to show that you are capable of applying original thought to any given problem and that you have a high level of independent thinking.

All work should be clearly labelled with your name and the title of the course you have applied for. You will also be required to

demonstrate evidence of any theoretical studies and examples of written work should be included.

Each course that requires a portfolio interview will have specific requirements. Please check website for details.

### **DBS (Disclosure and Barring Service)**

Your chosen course may require you to undergo an enhanced Disclosure and Barring Service (DBS) check before enrolling on the course. DBS identification documents are verified by trained staff in line with

DBS guidelines as part of the admissions process. If applicants decide to choose us as their place of study our DBS team will be in contact to arrange this check usually around May/June, prior to enrolment to ensure this is in place for the start of semester. There will be an administration charge for this service and you will be advised of this once you apply (for 2018/19 entry this was £44). Students will not be enrolled until their DBS Disclosure Certificate has been completed and issued.

Disclosure and Barring checks cannot be carried out for applicants who are not, or have never been resident in the UK. Applicants who reside, or previously have resided overseas will be required to provide a criminal record check or certificate of good conduct from their country or countries of residence prior to entry on to the course.

Disclosure and Barring Service:  
**[www.homeoffice.gov.uk/agencies-public-bodies/dbs/](http://www.homeoffice.gov.uk/agencies-public-bodies/dbs/)**

## **Fees and funding**

### **Do I have to pay anything up-front?**

No, you don't have to pay anything before you start your studies. Student loans are available to UK and EU students to cover tuition fees and are repayable only after you graduate and earn over the UK repayment threshold which is currently £25,000 a year, £2,083 a month or £480 a week.

Here are some key facts about tuition fees:

- College bursaries and financial assistance may be available to support paying for your tuition fees

(for more information please visit: **[www.southessex.ac.uk/higher-education/fees-and-funding](http://www.southessex.ac.uk/higher-education/fees-and-funding)**)

- If you are a first time higher education student, you can apply for a tuition fee loan to cover the cost of your course; these loans are provided by the government

### **Am I eligible for a tuition fee loan?**

Whether you qualify for student finance depends on:

- Your university or college
- Your course

- If you've studied a higher education course before
- Your age
- Your nationality or residency status

You can visit the following website for more information

**[www.gov.uk/student-finance/who-qualifies](http://www.gov.uk/student-finance/who-qualifies)**

### **Does household income affect me getting a tuition fee loan?**

No, tuition fee loans are not based on household income. As long as you are eligible to apply, you will receive the full tuition fee amount.



### **How do the loan repayments work?**

You'll only start making repayments when your income is over the UK repayment threshold, which is currently £25,000 a year, £2,083 a month or £480 a week. If your income falls below the repayment threshold, repayments will stop and only re-start when your income is over the threshold.

You repay 9% of your income over £25,000 a year, £2,083 a month or £480 a week.

Alternatively If you wish, you can pay the costs of your tuition in full at enrolment.

For full information on how to apply please visit [www.southessex.ac.uk/higher-education/fees-and-funding](http://www.southessex.ac.uk/higher-education/fees-and-funding) or if you have any questions you can email [HEfinance@southessex.ac.uk](mailto:HEfinance@southessex.ac.uk)

### **How long will it take me to repay my loan?**

This will vary depending on how much you have borrowed, but the balance of your loan will be automatically written off after 30 years. If you require further information on any of the issues regarding finance or feel you need to discuss your finances with an adviser please contact

**HEsupport@  
southessex.ac.uk**  
or phone **01702 220696**.

### **Please note**

If you already hold a higher education qualification when applying for entry to our higher education programmes you may not be eligible for further tuition loan funding. We strongly urge you to visit [www.gov.uk/browse/education/student-finance](http://www.gov.uk/browse/education/student-finance) or contact Student Finance England direct **0845 300 50 90**.

To find out if you qualify, contact our higher education team by emailing: [admissions@southessex.ac.uk](mailto:admissions@southessex.ac.uk)

For further information please visit: [www.gov.uk/student-finance](http://www.gov.uk/student-finance)

### **Will there be other costs?**

Your main costs for higher education will be tuition fees and the cost of books, printing/photocopies and equipment, however there may also be other costs to consider such as accommodation and living costs.

### **Do international students have other costs?**

When you apply for a UK Tier 4 student visa, you will need to demonstrate that you have sufficient funds in place to cover your tuition fees and living costs. The amount of money you must have available for living expenses depends on the length of your course.

# Will I be supported throughout my studies?



**Our aim is to support you from application through to your graduation ceremony with the highest quality information, advice and guidance. Our student services team has been assessed for, and attained, the highest quality standards.**

## **Where can I get careers advice and guidance?**

Our careers service will provide you with all the advice and resources you need to research your chosen career and to enhance your employment prospects in today's competitive graduate job market. You will have access to advice and guidance on career choice and planning,

progression to further study and employer information throughout your time with us. One-to-one impartial guidance is available by appointment and advisers can be found in student services.

Our careers advisers have access to a wealth of information on graduate careers and occupational information written by the Association of

Graduate Careers Advisory Services. Free magazines and employer directories are also available. You can also access online careers information and e-based guidance (e.g. Prospects Planner test) and discuss outcomes with a careers adviser.



### **Is there financial advice available?**

Yes, our advisers can discuss money matters with you and inform you of the financial support you may be eligible for from both Student Finance England and the College. They will support you with any applications and can help you to understand your budget whilst you study.

For more information on financial support see page 118 or visit

**[www.southessex.ac.uk/higher-education/fees-and-funding](http://www.southessex.ac.uk/higher-education/fees-and-funding)**

### **Can I get extra support while I'm studying?**

Yes, our trained counsellors are available to provide confidential support and advice. They can also provide contact details for specialist support groups and organisations. Our chaplain supports staff and students from all faiths and religious groups.

### **Is there support available if I have a disability?**

Yes, our disability adviser will be able to provide you with advice and support about studying with us if you have a disability or long term health condition that is likely to have an impact

on your studies. You can access confidential, ongoing guidance relating to your individual needs, which may include a specific learning difficulty, a physical or sensory impairment, Autistic Spectrum Disorder, or mental health difficulty.

Our experienced adviser facilitates support for students with a variety of disabilities, recognising that individuals may have very different needs. If you have a formal diagnosis and are a home student, additional support may be available to you in the form of Disabled Students' Allowance (DSA). We can assist you with your application for DSA and help you arrange a DSA Needs Assessment.

Please visit: **[www.southessex.ac.uk/higher-education/fees-and-funding](http://www.southessex.ac.uk/higher-education/fees-and-funding)**

### **More Information**

For more information about the type of support and facilities available to students with particular learning difficulties or disabilities, please make contact with us as early as possible so that we can discuss your needs.

Call student services on **01702 220400**  
email **HEsupport@southessex.ac.uk**  
or visit our website at **[www.southessex.ac.uk/he-student-services](http://www.southessex.ac.uk/he-student-services)**

For further information please visit:  
**[www.gov.uk/disabled-students-allowances-dsas/overview](http://www.gov.uk/disabled-students-allowances-dsas/overview)**



# Frequently asked questions about the admission process



## **What does the College feel about vocational courses?**

Most of our courses have a strong vocational element and applications from students taking certain vocational qualifications are welcomed. Students who have a mixed portfolio of qualifications (BTEC National Award/Certificate and A-levels) are also welcomed.

## **Does the College use unit grades in the admission process?**

We do not use unit grades as standard procedure; however unit grade information may be used on receipt of examination results for individual applicants who do not meet the conditions of their offer.

## **Will the College accept A-level General Studies and A-level Critical Thinking?**

Yes. All of our departments accept either A-level General Studies or A-level Critical Thinking, as these awards require you to demonstrate a range of skills and knowledge.

## **Is it necessary to have maths/English qualifications to enter a degree course?**

Yes, this is an essential entry criterion in addition to any Level 3 requirements.

## **What qualifications do I need if English is not my first language?**

The following standards are required:

- IELTS (Academic Version)
- 6.0 (for first year entry onto undergraduate programmes)
- 6.5 (for direct entry onto the second year of undergraduate programmes)
- Please see individual entry profiles as this may differ between programmes
- TOEFL (paper-based test)
- 540, 76 on IBT for first year entry to all courses

The College can accept other tests including:

- Cambridge English: Advanced (CAE) - overall Cambridge English scale score of B2 with 52+ (prior to January 2015)
- Cambridge English: Advanced (CAE) - overall Cambridge English scale score of 169. No less than 162 in each skill (from January 2015)
- Test in English for Educational Purposes (TEEP) - 3
- GCE O-level or GCSE English Language or Use of English - grade C
- Hong Kong Certificate of English Education - 3
- International Baccalaureate English B Syllabus (Standard Level) - 4

### **Will any courses require me to sit additional aptitude tests?**

We will not ask you to take any of the existing aptitude tests (eg LNAT, BMAT) as a pre-requisite for admission. We believe that the existing system for assessing applicants provides enough information to make informed decisions.

### **Does the College accept the Extended Project?**

If your results fall short of the offer level by a small margin, for example one A-level grade, your Extended Project result will be taken into account by the academic admissions tutor.

Please see individual entry profiles as this may differ between programmes

For information please visit **[www.southessex/highereducation/entryrequirements](http://www.southessex/highereducation/entryrequirements)**

### **What else will be taken into account when making offers?**

- GCSE performance, including possession of prerequisites (e.g. maths and/or English at grade C)
- AS-levels, including subject mix and declared results
- A-level or equivalent qualifications, including subject mix, need for prerequisites, and predicted grades
- Good personal statement, expressing clear motivation to study the subject and demonstrating academic skills such as critical thinking, analytical skills and problem-solving skills, as well as good communication skills

- Enrichment and extra-curricular activity, including work experience, qualifications (e.g. Duke of Edinburgh, Young Enterprise), positions of responsibility held, evidence of non-academic achievements and engagement in relevant cultural and social activities, which would be indicated in your personal statement
- Reference from school or college
- Interview/audition performance (if required)
- Portfolio evidence (if required)
- Any relevant mitigating circumstances which have a bearing upon your application

# Accommodation

University Square, Southend is purpose-built student accommodation, right next to the Southend campus.



The accommodation offers 562 student rooms including 65 studio flats. All rooms are en-suite with eight to ten students sharing a flat with a full kitchen and dining facilities. Each room is networked with 24-hour high speed internet access provided at no extra cost. Residents can enjoy the Wi-Fi and laundry facilities.

## Who can apply for accommodation?

All students aged over 18 on full or part-time courses.

## How much does it cost?

As a guide, contracts for the academic year 2019-20 are expected to be available from £148.05 per week for a single en-suite study room and £182.63 per week for a studio room. Payments are due once a term.

## Great reasons to stay:

- All-inclusive of bills, cleaning and internet
- Live with your friends; apply together as a group
- Just five minutes to lectures
- Close to transport networks
- Convenient location just off Southend High Street
- On-site gym with discounted membership rates (additional charges apply)
- Out-of-hours residents' support team of student volunteers
- 24-hour reception and security presence

## How do I apply for accommodation?

Download an application form from our website. You can also contact the accommodation team on **01702 220441** or email **accommodation@southessex.ac.uk**

## Read more at

**[www.southessex.ac.uk/accommodation](http://www.southessex.ac.uk/accommodation)**

# Student Union



When you enrol with us, you automatically become a member of the College's Student Union which is part of the National Union of Students (NUS).

Run by students, the Union exists purely to improve your College experience both academically and socially and make your time with us exciting and memorable. This membership gives you access to advice and information, discounts on parking, shopping,

stationery and many other useful benefits to make living on a student budget easier.

You can take an active part in shaping the Union by running for a position as an Executive Officer in the annual elections.

The Student Union also runs various charity events and awareness campaigns.

Being a student at South Essex College University Centre is your opportunity to play an active role

in our community, make friends, learn new things and ensure your voice is heard.

Check out the Student Union's Facebook page at: **[facebook.com/secsu](https://facebook.com/secsu)**





## **Disclaimer**

The information in this document is believed to be accurate at the time of publication, however, changes may be made at a later date. The courses offered by South Essex College University Centre are under constant review and development, so students and their representatives should always contact the College directly for the most up-to-date information or visit our website

**[www.southessex.ac.uk/university](http://www.southessex.ac.uk/university)**

## **Location disclaimer**

The College reserves the right to change the location of courses, so students and their representatives should always contact the College to confirm.

## **Alternative formats**

This prospectus can be made available in large print, audio and Braille formats upon request.

Please contact student services at the College for further information.

## **Credits**

### **Produced by**

Karen Duddy

### **Designed by**

Rich Harwood

### **Printed by**

Swallowtail Print

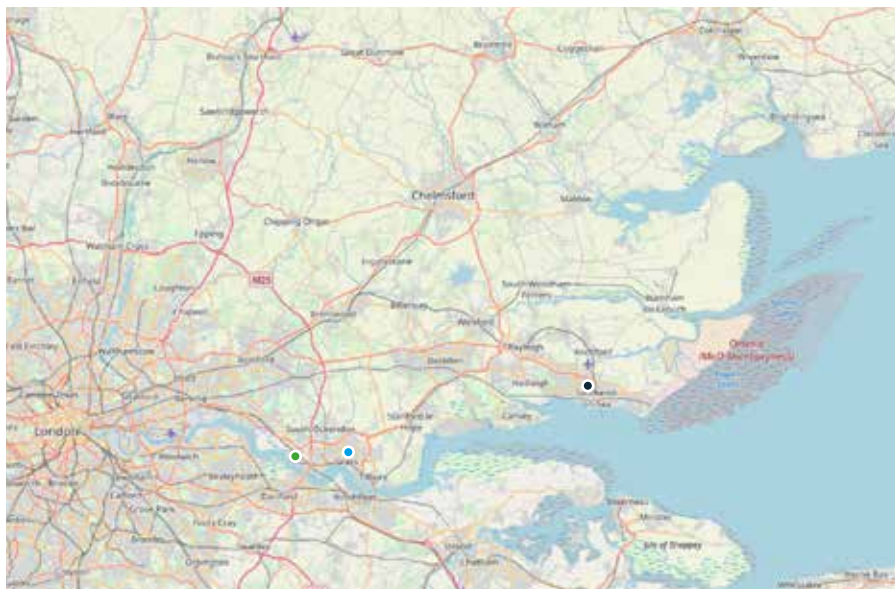
## **Illustrations by**

Hannah Miller and  
Gemma Day

## **Photography by**

Paul Tait, Martyn Dolton  
and Stephen Watts

# How to find us



## ● The Forum

Elmer Square  
Southend-on-Sea  
Essex  
SS1 1NE

### Telephone

01702 215 011

### Email

[forumsec@essex.ac.uk](mailto:forumsec@essex.ac.uk)

## ● Thurrock campus

High Street  
Grays  
Essex  
RM17 6TF

### Telephone

01702 220 400

(+44 for international calls)

### Email

[learning@southessex.ac.uk](mailto:learning@southessex.ac.uk)

## ● The Bob and Tamar Manoukian Costume Centre

High House Production Park  
Vellacott Close  
(off London Road)  
Purfleet  
RM19 1RJ

### Telephone

01708 892 621

# Degree Open Events

Luker Road, Southend 11am – 1pm

Sat 5 Oct 2019

Sat 30 Nov 2019

Sat 28 Mar 2020

Sat 20 Jun 2020

High House Production Park, Purfleet  
Costume Construction | 11am – 1pm

Sat 30 Nov 2019

Sat 28 Mar 2020

[www.southessex.ac.uk/HEoe](http://www.southessex.ac.uk/HEoe)



our partners



**ual:** university  
of the arts  
london

