





This is supported on Windows 7 Service Pack 1 and higher and on Mac OS X 10.10 and higher. You will need to use at least Internet Explorer 11, or the latest version of Chrome, Firefox or on a Mac, Safari.

To check what version of Internet Explorer you are using, click the Tools button  and click About Internet Explorer.

To check what version of Safari on a Mac you are using, click Safari at the top and click About Safari.

To check what version of Chrome you are using, click the menu button  and click About Google Chrome.

To check what version of Firefox you are using, click the menu button , click help  and click About Firefox.

Please ensure you have up-to-date anti-virus software installed on your PC. Free ones for Windows are available from Microsoft and AVG and for Mac from Sophos:-

<http://windows.microsoft.com/en-GB/windows/security-essentials-download>

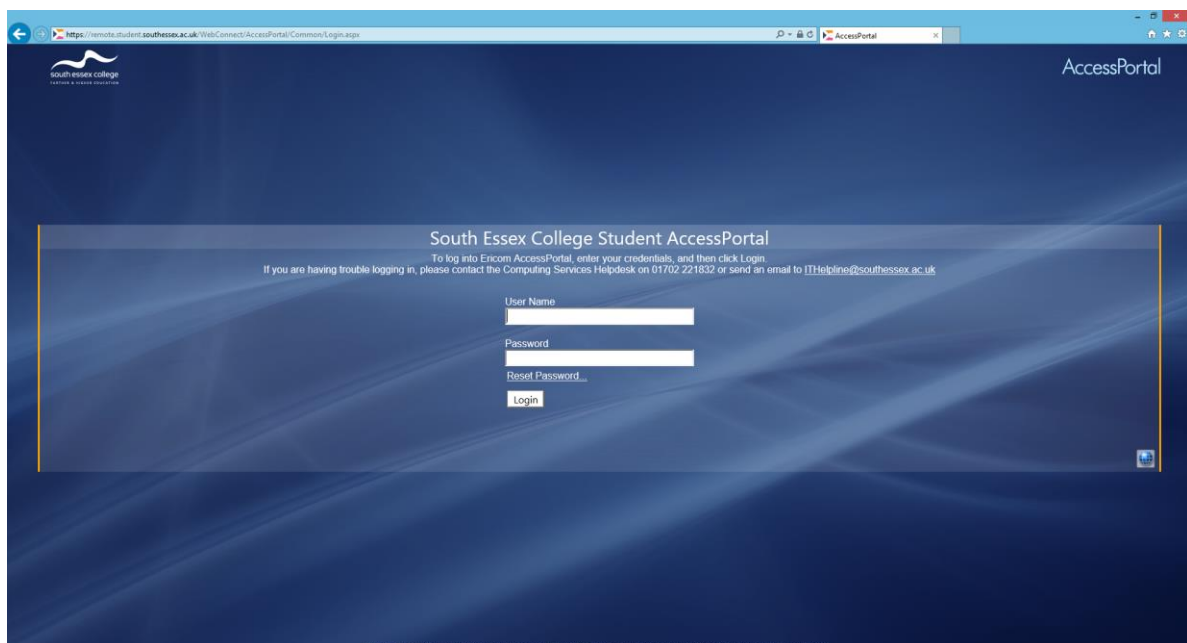
<http://free.avg.com>

<http://www.sophos.com/en-us/products/free-tools/sophos-antivirus-for-mac-home-edition.aspx>

To access College resources from home please visit

<https://remote.student.southessex.ac.uk>

You will be presented with a screen similar to that below:-



South Essex College Student AccessPortal

To log into Encom AccessPortal, enter your credentials, and then click Login.
If you are having trouble logging in, please contact the Computing Services Helpdesk on 01702 221832 or send an email to ITHelpline@southessex.ac.uk

User Name

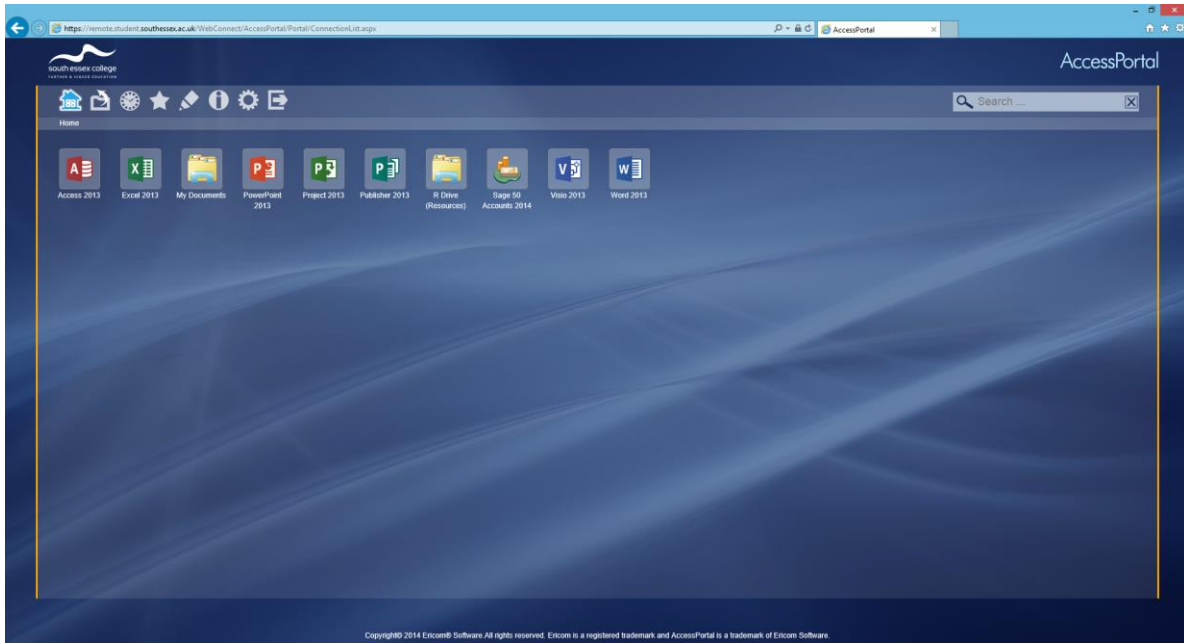
Password

[Reset Password](#)

Copyright© 2014 Encom® Software. All rights reserved. Encom is a registered trademark and AccessPortal is a trademark of Encom Software.

Enter your username and password as you would at the College. You do not need to enter anything in front of your username.

You will then be presented with a screen similar to this:-



You are now able to open the applications from our server. For example, click R Drive (Resources), you should see a new tab or window open with the AccessNow HTML 5 page, which will automatically load the application window into the browser page:-

