

South Essex College

# Higher Education

Degrees • Foundation Degrees • CertHE • DipHE



  
south essex college  
FURTHER & HIGHER EDUCATION  
Skills | Education | Careers

working in partnership with

 University of Essex

# Contents

You can discover more information and reasons to study with us on our website at  
[www.southessex.ac.uk/he](http://www.southessex.ac.uk/he)

- |   |  |  |  |                                |   |
|---|--|--|--|--------------------------------|---|
| <b>02</b> - Welcome                         | <b>14</b> - Career-focused education                               | <b>28</b> - Grants, bursaries and scholarships | <b>32</b> - Accommodation services                                   | <b>40</b> - Entry Requirements | <b>46</b> - <b>Course table index</b> (General) |
| <b>04</b> - Why choose South Essex College? | <b>18</b> - Well-equipped for your future (our facilities)         | <b>30</b> - Tuition fees: the facts            | <b>34</b> - University of Essex – (A collaborative partnership with) | <b>42</b> - How to apply       | <b>49</b> - Teacher Training Qualifications     |
| <b>06</b> - Southend                        | <b>24</b> - Supporting your success and students with disabilities | <b>31</b> - Fees and funding                   | <b>36</b> - Returning to learning                                    | <b>44</b> - Alumni Association |   |
| <b>08</b> - Thurrock and further afield     |  |  | <b>38</b> - International students                                   | <b>45</b> - UCAS tariff table  |   |
| <b>10</b> - Student life                    |  |  |  |                                |   |
| <b>12</b> - The Forum                       |  |  |  |                                |   |



# Welcome

Higher  
Education at  
South Essex  
College

**At South Essex College we're committed to offering you a quality higher education experience at a price that won't break the bank. Whether that's by ensuring a smooth transition to employment in your chosen field or to further postgraduate training, you'll graduate with the skills and experience you need to achieve your goals.**

Some of the greatest benefits include our small class sizes, significant teaching time, lower costs, ease of travel and teaching staff with fine academic backgrounds who also often have relevant industry experience and really understand the needs of their sector.

In 2011, our Higher Education Centre opened at our Southend Campus and September 2013 sees the unveiling of The Forum Southend-on-Sea, a £27 million ultra-modern library and learning zone. Located right next to our Southend Campus, The Forum has been developed in partnership with the University of Essex and Southend-on-Sea Borough Council. In addition, our higher education students have access

to University accommodation with the University of Essex who accredit our degrees.

Although we attract many local people our reach is much wider. Recent links with a number of organisations and colleges in the Far East have brought a significant increase in the number of overseas students at South Essex College.

The benefits of cultural exchange, small classes, high-quality teaching, career-focused courses and your own hard work means you can study a higher education qualification that will provide you with exciting career opportunities or further study at postgraduate level.



I look forward to welcoming you to South Essex College,

A handwritten signature in black ink that reads "Angela O'Donoghue". The signature is fluid and cursive.

Principal & Chief Executive  
Angela O'Donoghue CBE, BA Hons

# Why choose South Essex College?

## ■ High-quality degrees

Our degree programmes are validated by the University of Essex, one of the UK's leading academic institutions with a top ten ranking for research. (See Page 34)

## ■ Career-focused degrees

Our degree programmes are designed in partnership with employers to ensure you're fully prepared for employment. (See Page 14)

## ■ Quality outcomes for our students

The majority of our higher education students achieve a First or 2.1 in their degrees.

## ■ You'll save money

With tuition fees well below the national average, our degree courses ensure you get maximum return on your career investment.

## ■ More time with your tutor

Our classes are small so you get more personal attention and a more personalised learning experience which maximises your opportunity to achieve great things.

## ■ Flexibility and convenience

Some of our students come straight from sixth form while others have taken a break or spent time in work prior to starting their degree. This means you'll always find people at college just like you and a wealth of diverse and different people who will enrich your life at college.

## ■ Technology and resources

The Southend Campus is full of industry-specific equipment, labs, studios and study areas (see page 18) and it is now also being supplemented by The Forum (see page 12).

## ■ Why choose South Essex College over a more distant university?

A substantial number of higher education courses are taught in colleges. There are many reasons for students preferring colleges, including:

- Smaller classes
- Lower costs
- Tutors with recent industry experience
- At Southend, our transport links are excellent: the London mainline station is less than one minute from our main reception and the expanding Southend airport with its international links is less than three miles away.

Read more at:

[www.southessex.ac.uk/about](http://www.southessex.ac.uk/about)



# Southend

## ■ A convenient place to live

Our Southend Campus is located in the heart of Southend High Street, with shops, restaurants and bars barely a stone's throw away.

The transport links are excellent with a comprehensive bus network and two major London-bound train lines (including nine rail stations in the borough).

## ■ Arts & festivals

There's a strong community of artists in the town with regular shows and exhibitions such as the Beecroft and Focal Point Galleries, which feature visits from international artists. Southend's major theatres, the Cliffs Pavilion and the Palace Theatre, attract major West End touring productions, as well as concerts, ballet, opera and comedy.

There are also various festivals throughout the year including: Southend Film Festival (April), Village Green (June), Leigh Folk Festival (June), Thurrock Festival (July).

## ■ Sport and leisure

Being a coastal town, windsurfing, sailing and kite surfing are popular local pastimes, with speedboat racing and a sailing regatta also taking place every year. If hiking along the estuary is your thing then you'll enjoy picturesque Hadleigh Country Park and walks. For mountain bike fans the track created for the 2012 Olympics offers a challenging off-road course for both cyclists and runners.

The perfect student town. With the growth of Southend as a university town, it is now one of the most happening towns outside of London, making it the ideal place to live, work and study.

## ■ Parks, gardens & history

Southend offers a number of lavish parks, public gardens and woodland. It is a town steeped in history with an 11th century castle, an ancient priory and churches mentioned in the Domesday Book as well as several local museums.

## ■ Food and drink

With around 300 places to eat in the borough, from large chains and independent family-run restaurants to the College's own Waves restaurant, Southend offers a choice of global cuisine.



# Thurrock and further afield

Students at our Thurrock Campus will discover that the area is rich in history and culture, with no shortage of fun things to see and do, from stately homes to music festivals.

## ■ Steeped in history

Essex is a treasure trove of history with many attractions to visit. Essex features several stately homes: Audley End House near Saffron Walden was once a royal palace, while Ingatestone Hall has been owned by the same family since the 16th century. Layer Marney Tower is the tallest Tudor gatehouse in Britain, featuring gardens and parkland, and Hyde Hall near Chelmsford offers beautiful gardens managed by the Royal Horticultural Society. You can also walk in the footsteps of John Constable at Dedham Vale and Stour Valley, an area of outstanding natural beauty.

## ■ Country and wildlife

The county boasts huge swathes of green belt country and many important wildlife habitats. Notable open space includes Langdon Hills Country Park and Grove House Wood, managed by Essex Wildlife Trust, as well as the ancient woodlands of Epping Forest. Museums and historic buildings in the area include Coalhouse Fort, Tilbury Fort, Purfleet Heritage and Military Centre, Thurrock Museum and Walton Hall Farm Museum. Finally, the neighbouring county of Kent is renowned as 'The Garden of England' and features the picturesque towns of Whitstable, Broadstairs, Rochester and Canterbury.

## ■ Entertainment

Every August, Hylands Park hosts the V Festival with line-ups that have included Eminem, Rihanna, Coldplay, Foo Fighters, Kings of Leon, The Prodigy and the Red Hot Chili Peppers. Blackshots Fields in Grays hosts The Big Weekend every August and features a massive live stage that plays host to bands and DJs. Motorsport enthusiasts will love Arena Essex, which regularly hosts speedway, banger and stock car racing events while football fans can watch Grays Athletic Football Club in action.

Read more at:

[www.southessex.ac.uk/essex](http://www.southessex.ac.uk/essex)

# Student life

## ■ South Essex College Student Union

Every student at South Essex College is automatically a member of the College's Student Union. Run by students for students, the Student Union exists to make sure your voice is heard and that your student experience is the best it can be.

From running events, like South SX Fresh, the College's Freshers' Fair, to attending regular Student Union meetings with the College's HE staff to discuss your issues, comments and ideas, our student representatives are routinely consulted on the development of College policies and have had a great influence on the services provided to the student body.

If you'd like to get involved with the Student Union, why not drop us a note on Facebook or via email at [learnervoice@southessex.ac.uk](mailto:learnervoice@southessex.ac.uk)

## ■ University of Essex Student Union

The University of Essex has its own Student Union, which is based in the University's Gateway building, next to our Southend Campus. This houses the Union bar, which sells hot and cold food and drinks at discounted prices and is decked out with comfy seating, large-screen TVs with Sky, study areas, computers and a meeting room. South Essex College students can use the Union bar and enjoy the other benefits that come with Union membership by purchasing an annual pass from the Gateway building.

## ■ Clubs and societies

Both student unions offer a range of clubs and societies that students can take part in, details of which can be found on the University's website or during Freshers' Fair.

Read more at:

[www.southessex.ac.uk/essex](http://www.southessex.ac.uk/essex)  
[www.essexstudent.com](http://www.essexstudent.com)



# The Forum

**The Forum Southend-on-Sea is a unique state-of-the art academic and public library learning facility.**

The four-storey building will create a modern new teaching area for the College giving it more dedicated space for its higher education students. It is planned that The Forum will be open seven days a week offering greater access to resources and even more flexible time for study.

Situated next to the Southend Campus, the impressive £27 million building is a joint project between Southend-on-Sea Borough Council, the University of Essex and South Essex College. It will also feature a café, lecture theatre, teaching areas and a public art gallery.

*Read more at:*

[www.southessex.ac.uk/newbuilds](http://www.southessex.ac.uk/newbuilds)

The Forum Southend-on-Sea is set to open in Autumn 2013 and will provide higher education students with a dedicated teaching and learning space.



# Career-focused education

Developed with employers in mind, our degree programmes have one key goal: to prepare you for your chosen career! Blending academic study with professional practice, your degree will instil the confidence and experience you need to embark on a rewarding and fulfilling career.

## ■ Industry links

Our degrees are developed in close partnership with employers to ensure our graduates leave with the industry-relevant skills that employers are seeking. From Sony, Apple, Microsoft and Nikon to the NSPCC and Mencap, all our industry partners contribute to curriculum development in the form of exciting live project briefs and competitions.

## ■ Expert training

The College is an Apple Certified Training Centre for Education, which enables us to deliver high-quality training and certification in the key software applications used by professionals. As the first official Nikon Academy in the UK, we can offer our students exclusive seminars with

industry experts and demonstrations of new hardware. We are also members of several National Skills Academies, including Creative and Cultural, Retail, Advanced Manufacturing and the Peter Jones Enterprise Academy.

## ■ Professional accreditation

Many of our courses provide students with the opportunity to complete industry-relevant qualifications as part of their studies. Our Network Technology degree embeds the Cisco Certified Network Associate (CCNA) programme into our course modules. This ensures that students are equipped with current industry knowledge and are more employable than graduates from other courses. The College is a member of The Independent Games

Developers' Association (TIGA), so students on our BSc (Hons) Computer Games Design degree gain access to exclusive networking events and online resources. Students also have the opportunity to visit the International Games Convention in Tokyo.

Our Social Work degree is accredited by the Health and Care Professions Council and the College has active working partnerships with Southend-on-Sea Borough Council, Thurrock and Essex Councils, the YMCA, Kids Inspire, Trust Links, the Terrence Higgins Trust, Family Mosaic, Catch 22 and individual service users. All these renowned organisations play a crucial role in overseeing the quality and development of the curriculum and our students benefit immensely.



## ■ Live projects and guest speakers

Being in such close proximity to London means we can offer an extensive programme of guest speakers, industry visits, exhibitions and other events that more distant courses lack.

Those studying within the Faculty of Media and Creative Arts will benefit from an exciting programme of live briefs, developed in partnership with high-profile companies like NBC and Universal, who participate in setting the project brief and in reviewing your work. We also involve the local community in live projects including local museums, galleries and voluntary organisations such as Southend-on-Sea Museum and Planetarium, the Focal Point Gallery and Southend Borough Council. Sports students also complete a live assessment where they plan, organise and deliver a community sport event to local schools and organisations.

Our sports students benefit from speakers that include sports psychologists, rehabilitation therapists, coaches, sports development officers and personal fitness instructors who share their practical experiences in small group discussions and seminars. Sport Essex, the official body for sport in Essex, also contributes speakers. Sports Essex is recognised by Sport England and the Department for Culture, Media and Sport and is dedicated to ensuring that anyone interested in sport will achieve their highest potential.

## ■ Work placement opportunities

Practical work experience is central to many of our degree programmes and placements can often lead to offers of permanent employment. For example, one of the modules on the Network Technology degree is an industry-based project where students are placed with organisations such as Lloyds TSB, FMI Solutions and Entuity.

Early Years students spend one day a week in a work placement setting, where they can put theory into practice. Interior Design students also take work placements with companies such as the KSS Design Group, DEGW Design Consultancy, Zebra and Fletcher Priest Architects where they get the chance to put theory into practice and see the latest materials, designs and practices in a commercial practice.



# Well-equipped for your future – our facilities

With technology advancing at an ever-increasing rate, having access to the latest technology and software is essential as you study and prepare to enter employment.

We are committed to giving you access to the exact equipment, facilities and software applications you will use in the workplace. We offer degree programmes that are specially designed to produce graduates who are technologically savvy and well-placed to enter graduate employment.

## ■ Information Technology

Our purpose-built Higher Education Centre at the Southend Campus is equipped with high-spec PCs and Macs for students to use outside of timetabled sessions. We manage a high-speed internet connection and Wi-Fi hotspots on campus, which means you can get online from almost

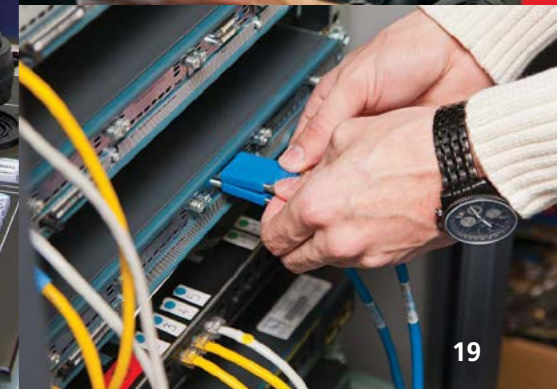
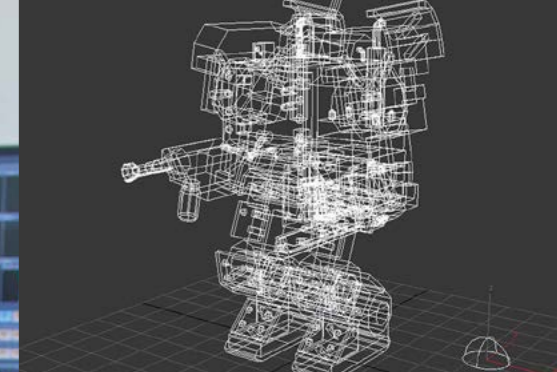
anywhere. Our network also allows access to the College intranet, which provides links to hundreds of online journals and periodicals, as well as sports results, forums, college policies, student council news and more.

## ■ Engineering

Our engineering undergraduates have access to excellent facilities including Computer Aided Design (CAD) suites, and laboratories for science, materials, electrical/electronics, pneumatics and hydraulics testing as well as a mechanical workshop.

## ■ Games Development

Students will use DarkBASIC Professional, currently the most advanced games development package available, enabling the creation of 2D and 3D animations, environment mapping, lightning-fast 2D sprites, cartoon shading and much more. Games designers will also get to grips with Autodesk Maya and 3D Studio Max, a modelling, animation and rendering package that has been used to create the visual effects for blockbuster films such as Avatar, the Harry Potter franchise and Star Wars: The Clone Wars TV series. Finally, networked PCs allow for LAN-based gaming environments to be explored.



## ■ Sports

Our Personal Fitness and Sports Studies programmes offer a range of specialist resources. A training gym for planning and delivering sessions to clients is available, which provides students with resources such as cardiovascular and resistance machines and a range of free weights. Our sports laboratory provides students with a consultancy space to assess a client's weight and nutrition, as well as access to statistical analysis software such as SPSS.

## ■ Media and Creative Arts

As well as holding the prestigious Association of Colleges (AoC) Beacon Award status for media students' work with Fair Havens Hospice, the College is also an Apple Certified Training Centre for Education (AATCe), which offers students a jump-start in film, television, recording and other new media careers. As an AATCe, we offer first-class digital education in the key software applications used by the professionals.

## ■ Photography

We became the first official Nikon Academy in the UK, which offers exclusive benefits to students on our BA (Hons) Photography degree, including seminars where Nikon's own experts deliver a wide range of information on subjects ranging from the latest technology to its use in a professional environment. Students will also be able to take advantage of a generous discount scheme on photographic equipment.

Our photography department includes a well-equipped studio (with flash and tungsten lighting), black and white darkrooms with manual processing, digital workflow facilities including Macs, film scanners and high-quality digital printing. We stock Nikon DSLR cameras and lenses and a Phase One medium format digital camera kit with Mac laptop and Capture One software for tethered shooting, industry-standard workflow and RAW file processing. We also offer a comprehensive range of traditional film

cameras in 35mm, medium and large formats. We even have an on-campus gallery for displaying your work. We have established links with several professional photographic studios locally that provide work experience opportunities for our students.

## ■ Interior Design

Students on the BA (Hons) Interior Design programme will be trained to use Computer Aided Design (CAD) and image manipulation packages, such as AutoCAD Architecture and Photoshop.

## ■ Fashion

The fashion department is equipped with Gerber suites, which are used for pattern cutting and production of fashion design. The department also has specialist textile design equipment, exactly what you would see and use in industry.



## ■ Fine Art

The Fine Art Academy has established strong relationships with local organisations that include TAP, Focal Point Gallery and Metal who support us in the development of an exciting guest speaker programme. National and international artists, curators and writers have given talks in the performance pod, worked on local projects with our students and have provided one-to-one tutorials. In recent years we have welcomed Phyllida Barlow and Fiona MacDonald, John Russell, Annabel Dover and Alex Pearl, Chloe Brookes, Craig Fisher, Catherine Wood (curator for the TATE Modern), Alice Anderson, Megan Broadmeadow, Mark Davey, Roger Cook and Marc Chaimowicz, among others.

Our students were also invited to a performance by Kai Althoff and Yair Oelbaum at the Palace Theatre which subsequently toured to the Whitney Biennial, New York 2012 and the ICA, London 2012.

## ■ Music

Our music facilities include Extreme, our off-site recording studio. This multi-track studio uses Pro Tools for recording, has a wide variety of microphones, various outboard gear and an additional mix-down suite for post-production work. Extreme also includes four rehearsal rooms, a variety of instruments including a Yamaha acoustic piano and a range of guitars. Students will also use the computer music studio in the main building which utilises professional music-creation software such as Sibelius and Logic.

## ■ Film and Television

Our media department has the latest HD TriCaster system (as used on ITV's The X-Factor) allowing 4-camera, 14-channel HD live shows that are produced to broadcast quality. Students can produce explosive 3D visual effects, video playback, graphics, transitions and virtual sets. Live streaming is available at the push of a button for projects to be delivered on location, in our studio or backstage. Students have

access to broadcast-quality HD video cameras, certified by the BBC, which they can borrow for their individual projects and our Apple editing suites can be used to edit and polish the final product.

## ■ Specialist learning spaces

Our art and design courses feature specialist technical studios appropriate for print, photography, sculpture and digital manipulation. We also have animation TV studios, photographic darkrooms and studio production areas. Our BA (Hons) Digital Animation degree not only covers CGI development but also offers students the chance to study traditional methods of animation. No matter what you choose to study with us, you can be assured that we are well-equipped to help you succeed and realise your potential.



# Supporting your success

**As a student with us, you will have access to our expert Student Services team who are here to offer help and advice with any issues you may have about your course, finances or with any personal concerns.**

From the moment you start considering South Essex College as an option, our aim is to support you from the time you apply through to your graduation ceremony with the highest quality information, advice and guidance. Our Student Services team has been assessed for, and attained, the highest quality standards for our effective delivery of information, advice and guidance.

Trained counsellors are available to provide confidential support and to offer advice and contact details for specialist support groups and organisations. There is also a College chaplain on-hand to support staff and students from all faiths and religious groups.



## ■ Careers advice and guidance

Our careers service aims to provide you with all the advice and resources you need to research your chosen career and to enhance your employment prospects in today's competitive graduate job market. You will have access to advice and guidance on career choice and planning, progression to further study and employer information throughout your time with us. One-to-one impartial guidance is available by appointment and advisers can be found in Student Services.

Our careers advisers have access to a wealth of information on graduate careers and occupational information written by the Association of Graduate Careers Advisory Services. Free magazines and employer directories are also available. You can also access online careers information and e-based guidance (e.g. Prospects Planner test) and discuss outcomes with a careers adviser. You will also have the opportunity to attend careers events and presentations at the University of Essex's Colchester Campus.

## ■ JobShop

You may need to find part-time work to support yourself financially through your course or you may want to find relevant work experience to help confirm your career path and gain industry contacts.

Our JobShop provides you with access to part-time work with established local and national employers. Vacancies are posted on the College noticeboards, on the College intranet and in Student Services.

## ■ Students with disabilities

The College has robust systems in place for assessing an individual's needs, which includes both hidden and physical disabilities. Support and teaching staff work together to meet the needs of students with disabilities and learning difficulties to ensure equal access to the curriculum, equipment and physical resources.

Our well-qualified and experienced advisers facilitate support for students with a variety of disabilities. These

include hearing impairments, dyslexia, mobility issues and visual impairments. Staff engage in ongoing professional development to ensure their knowledge and skills are up to date. Additional support may be available to students through Disabled Students' Allowances (DSAs). Please see Page 28 for further details on this type of financial support. In partnership with DSA Assessors, we can advise on the availability of a range of equipment to meet your requirements, including laptops with voice-activated software and a wide variety of adaptive technology. Study skills sessions can also be arranged for supported students to assist with planning their time, as well as improving literacy, numeracy and essay writing skills.

For more information about the type of support and facilities available to students with particular learning difficulties or disabilities, please call Student Services on **0845 52 12345**, email **hesupport@southessex.ac.uk** or visit our website at **www.southessex.ac.uk**



# Grants, bursaries and scholarships

Aside from tuition fees, there are other costs to cover such as accommodation, food, travel, books and entertainment. There are various grants, bursaries and loans available to help cover these and other costs.

## ■ Grants

Grants are available for students from low-income backgrounds. Depending on the type of grant, household income may determine the amount received or whether the grant is awarded. Grants don't have to be paid back. Available grants include:

- Disabled Students' Allowance (DSA)
- Childcare Grant
- Maintenance Grant
- Special Support Grant

## ■ Living cost loans

Available to first-time students studying a full-time course, this loan, which is dependent on household income as well as where you study and live, can help fund living costs. Please visit [www.gov.uk/student-finance/loans-and-grants](http://www.gov.uk/student-finance/loans-and-grants) for further information and advice.

## ■ Parents' Learning Allowance

This allowance, which is dependent on your household income, can be used to help pay for course costs such as books and travel.

## ■ Access to Learning Fund

This fund can provide extra financial help to students who are thinking of dropping out of their course due to financial emergencies.

## ■ Scholarships and bursaries

- National Scholarship Programme  
Designed to help students from low-income backgrounds, this scheme offers a tuition fee waiver for your first year of higher education study – details are available at [www.southessex.ac.uk/he/fees-and-funding](http://www.southessex.ac.uk/he/fees-and-funding)
- College Progression Bursary  
Available to current further education students at the College who progress within the same year to one of our degree programmes, this offers a non-means-tested bursary for each year of higher education study.

Read more at:

[www.southessex.ac.uk/funding](http://www.southessex.ac.uk/funding)



# Tuition fees: the facts

## ■ No upfront tuition fees

If you're a first time UK or EU undergraduate student you should not have to pay tuition fees before starting your studies. Tuition fee loans are available through the Student Loans Company to all eligible students.

## ■ How do I know if I'm eligible?

To be eligible for a tuition fee loan you must fulfil certain criteria in regards to your UK/EU residency status, your course and whether this is your first time studying a higher education course. We strongly advise you visit the UKCISA website for further advice about eligibility and what the residency status criteria are:

[www.ukcisa.org.uk/student/info\\_sheets/tuition\\_fees\\_e\\_he.php](http://www.ukcisa.org.uk/student/info_sheets/tuition_fees_e_he.php)

Please note if you already possess a higher education qualification when applying for entry to our

undergraduate programmes you may not be eligible for further tuition loan funding. We strongly urge you to visit [www.gov.uk/browse/education/student-finance](http://www.gov.uk/browse/education/student-finance) or contact Student Finance England direct: **0845 300 50 90**

## ■ How much will I get?

Tuition fee loans are not means-tested. This means it doesn't matter what your household income is. As long as you are otherwise eligible to receive the loan, you will receive the full amount to cover your tuition fees and these are paid directly to the College.

## ■ How do repayments work?

Your first loan repayment is due the April after you graduate; however, you will only have to make repayments if you earn over £21,000 per year. Your repayments are deducted automatically from your pay through the tax system.

## ■ How much will my repayments be?

Your monthly repayments will vary depending on how much you earn, but as a rule your repayment amount is based on a figure of 9% of any money you earn over £21,000 a year.

Annual income before tax	Monthly salary	Monthly repayment
£21,000	£1,750	£0
£22,000	£1,833	£7
£25,000	£2,083	£30
£30,000	£2,500	£67
£35,000	£2,916	£105

## ■ What happens if I become unemployed or don't earn £21,000?

Not a problem. If you lose your job or if your salary falls below £21,000 per year for any reason your repayments stop and only resume once you earn more than £21,000. Should you not have made full repayment due to the above within 30 years, the balance of your loan is written off.

## ■ Where can I find more information?

For general information on student finance, visit

[www.gov.uk/studentfinance](http://www.gov.uk/studentfinance)

If you need additional help or have a specific question, our Funding and Welfare Team is on-hand to assist you on a range of funding-related issues.

Read more at:

[www.southessex.ac.uk/funding](http://www.southessex.ac.uk/funding)

# Fees and funding

**We're committed to providing our students with quality higher education experiences that emphasise long-term career outcomes and represent excellent value for money.**

## ■ UK students

We've set our tuition fees at £7,000 a year for UK and EU students starting full-time higher education courses in 2014. This is well below the national average and is among the lowest in the region. Student tuition loans are available to cover these fees.

## ■ EU students

Applicants from EU countries are classed as 'home' students and pay the same fees as UK students. More information is available for EU students from the EU team at the Department for Education at [www.gov.uk](http://www.gov.uk)

## ■ International students

Tuition fees for international (non-EU) students starting full-time higher education courses in 2014 are set at £9,950. On application you will need to provide evidence of your ability to pay tuition fees and cover living expenses during your studies.

For more information, see [www.southessex.ac.uk/international](http://www.southessex.ac.uk/international)

or contact the College's Admissions team via [admissions@southessex.ac.uk](mailto:admissions@southessex.ac.uk)

If you require the College to sponsor your studies with the UK Border Agency you must declare this when you apply through UCAS.

Read more at:

[www.southessex.ac.uk/funding](http://www.southessex.ac.uk/funding)

# Accommodation services

University Square offers 561 student rooms including 64 studio flats. All rooms are en suite with eight to ten students sharing a flat with a full kitchen and dining facilities. Each room is networked with 24-hour high-speed internet access provided at no extra cost. Residents can enjoy the common room which offers study and relaxation space, widescreen televisions, Wi-Fi and laundry facilities.

## ■ Who can apply for accommodation?

All South Essex College students aged over 18 on full- or part-time higher education courses.

## ■ How much does it cost?

As a guide, two year contracts for the academic year 2013-14 are expected to be available from £115.15 per week for a single en suite study room. This is

a fixed price for two years and includes free summer vacation accommodation\* Standard academic year contracts for the academic year 2013-14 are expected to be available from £124.74 per week for a single en suite study room with payments due once a term.

## ■ Great reasons to stay:

- All bills, cleaning and internet included
- Live with your friends; apply together as a group
- Just five minutes to lectures
- Close to transport networks
- Convenient location just off Southend High Street
- On-site gym with discounted membership rates (additional charges apply)
- Out-of-hours residents' support team of student volunteers
- 24-hour reception and security presence

## ■ How do I apply?

Download an application form from our website. You can also contact the Accommodation team on **01702 220441** or email: [hesupport@southessex.ac.uk](mailto:hesupport@southessex.ac.uk)

Read more at:

[www.southessex.ac.uk/accommodation](http://www.southessex.ac.uk/accommodation)

\*terms and conditions apply, see website for more details.



University Square is the University of Essex's purpose-built student accommodation, right next to the Southend campuses of both the University of Essex and South Essex College.



- ↑ House 5
- House 4 ↗
- House 6 ↗



# University of Essex

A collaborative partnership with South Essex College.

Founded in 1964, the University of Essex is one of the UK's leading academic institutions and is ranked in the top ten nationally for research.

There are now more than 12,000 students studying at three campuses across Essex in Colchester, Southend and Loughton. Academic departments span the humanities, social sciences, and science and health. Essex is one of the UK's most internationally diverse Universities, with students from more than 130 countries. The University's Southend Campus is located adjacent to South Essex College and offers modern, state-of-the-art teaching and study spaces, medical and dental skills labs and the Union, a newly expanded Students' Union facility.

Clifftown Studios, housed in a former church, provides a variety of unique and inspirational rehearsal and performance spaces for students

studying at the University's East 15 Acting School.

## ■ The following courses are available at the University of Essex Southend Campus for 2014:

### Essex Business School

- BBA Bachelor of Business Administration
- BSc International Business and Entrepreneurship
- BSc Marketing

### School of Health and Human Sciences

- BSc Nursing (Adult and Mental Health routes)
- FdSc Oral Health Sciences

### East 15 Acting School

- BA Acting and Stage Combat
- BA Acting and Community Theatre
- BA Physical Theatre
- BA World Performance

For more details of these and other University of Essex courses, see the latest University of Essex undergraduate prospectus.

To obtain a copy, please contact the University by email at [admit@essex.ac.uk](mailto:admit@essex.ac.uk) or by telephone on **01206 873666**

Read more at:

[www.essex.ac.uk](http://www.essex.ac.uk)



## Evolve gym

Opened in July 2012, the brand new Evolve gym and fitness studio boasts state of the art equipment and an environment designed to encourage you to exercise.

Located only three minutes' walk from the College and just off the High Street, the air conditioned gym has fully qualified and friendly staff on hand at all times to offer advice, motivate and help you get the most out of your work out.

The Life Fitness top of the range equipment includes: treadmills, bikes, cross-trainers and concept 2 rowers. Resistance equipment enables a total body work out and our free weights include dumbbells, benches, half rack and kettlebells.

Student memberships are available at the great rate of £37.50\* per term.

Read more at:

[www.essex.ac.uk/sport/evolvese](http://www.essex.ac.uk/sport/evolvese)

\* prices based on 2012-2013 academic year.



Clockwise from top left: Evolve gym in Southend, The Gateway Building at our Southend Campus and the Ivor Crewe Lecture Hall at our Colchester Campus.



# Returning to learning

## ■ Access to Higher Education Diplomas

Designed specifically for mature learners who have the potential to study for a degree but who have been unable to complete the relevant entry qualifications because of external circumstances, this one-year qualification will help you develop the knowledge, skills and confidence needed for degree-level study. Even if you've been out of education for a long time, our lecturers are well aware of this and won't throw you in at the deep end.

Access Diplomas are recognised across the UK and can be used to apply to any higher education institution. With the grounding provided by these preparatory courses, Access students are often high achievers and progress to exciting new careers, seeing changes in their lives they never thought possible.

## ■ We offer Access to Higher Education Diplomas in:

Art and Design, Business, Health Professions, Information and Communication Technology (ICT), Media, Music, Science, Social Studies, Social Work, Teaching.

## ■ Supporting you all the way

Study skills are a key component of Access courses. You can also take advantage of extra study skills classes, one-to-one tutorial time and academic support through our Student Services team.

*Read more at:*

[www.southessex.ac.uk/access](http://www.southessex.ac.uk/access)

With 50 per cent of our students classed as mature you are not alone in wanting to get back into education. While it may seem daunting, it doesn't need to be. Get on the fast-track to higher level study with our Access to Higher Education Diplomas.



# International students

**We welcome applicants educated overseas and strive to make the process of studying abroad as smooth and enjoyable as possible.**

We can help you settle in, advise you on immigration issues and provide guidance on everything from working while studying and how to open a bank account to information about the local area and cultural differences. When you start with us you will also have an induction session which will give you the chance to meet other students to help you settle in academically and socially.

## ■ Course applications

If you are an applicant from outside the European Union, you should send your application to UCAS no later than 30 June 2014. For more information about applying for courses, see Page 42 or see our application guide at:

[www.southessex.ac.uk/applying](http://www.southessex.ac.uk/applying)

## ■ Entry requirements

We are happy to make offers of admission based on overseas qualifications that are equivalent to our general entrance requirements (see Page 40). We are able to accept a wide variety of qualifications which are awarded overseas and we use the UK NARIC (National Academic Recognition Information Centre) guidelines to make international comparisons. For further information, visit [www.naric.org.uk](http://www.naric.org.uk)

## ■ English language requirements

If English is not your first language you will need to meet our English language requirements as part of any offer of admission to the College. The following standards are required:

- IELTS (academic version): 6.0
- TOEFL (paper-based test): 540 (or 207 computer-based test, 76 on IBT)
- International Baccalaureate English B Syllabus (Standard Level)

If you are applying for the second year of a degree course you will need to demonstrate a higher level of English language proficiency equivalent to IELTS 6.5 (TOEFL 600, 250 or 100).

## ■ Immigration and applying for a visa

In order to study in the UK you will need a student visa. For detailed information on student visas, including how to apply and working in the UK, please visit the following:

[www.ukcisa.org.uk](http://www.ukcisa.org.uk)  
[www.britishcouncil.org](http://www.britishcouncil.org)  
[www.ukba.homeoffice.gov.uk](http://www.ukba.homeoffice.gov.uk)

*Read more at:*

[www.southessex.ac.uk/international](http://www.southessex.ac.uk/international)



# Entry requirements

For detailed entry requirements on specific courses, see the individual course listing pages at [www.southessex.ac.uk](http://www.southessex.ac.uk)

## ■ General entry requirements

All applicants should possess:

- GCSE English Language Grade C or above or equivalent such as Functional Skills/Learn Direct (all programmes of study).
- GCSE Maths Grade C or above or equivalent such as Functional Skills/Learn Direct (selected programmes of study).
- A full Level 3 qualification\* or above.

Please note if you already possess a higher education qualification when applying for entry to our undergraduate programmes you may not be eligible for further tuition loan funding.

We strongly urge you to visit [www.gov.uk/browse/education/student-finance](http://www.gov.uk/browse/education/student-finance) or contact Student Finance England direct on **0845 300 50 90**

Some courses may require you to complete a Disclosure and Barring Service (DBS) check, health questionnaire or attend an interview, audition or portfolio viewing. This will be specified in individual course listings.

## ■ Full honours degree courses

For most of our BA (Hons) and BSc (Hons) degrees you will need a minimum of 160 UCAS points.

## ■ Foundation degree courses and certificate/diplomas in higher education

For our FdA, FdSc, CertHE or DipHE courses you will need between 40 and 160 UCAS points.

\*Your UCAS points total will usually be made up from one or more of the following:

- A levels
- BTEC Level 3 qualifications (QCF and NQF)
- AQA Baccalaureate
- Progression Diploma
- Advanced Diploma
- Extended Project
- European/Welsh/International Baccalaureate

For the full list of entry qualifications, please see the entry requirements on the individual course pages of our website at [www.southessex.ac.uk](http://www.southessex.ac.uk)

## ■ International students

If English isn't your first language, you will need to prove that you have a recognised English language qualification. Entry requirements for international students can be found on Page 38, or on our website at [www.southessex.ac.uk/international](http://www.southessex.ac.uk/international)

Please note if you require UK Border Agency Sponsorship, English language criteria are detailed at [www.ukba.homeoffice.gov.uk](http://www.ukba.homeoffice.gov.uk)

If you would like to discuss your eligibility before submitting a formal application, please contact our Admissions team on **0845 52 12345** or via email at [admissions@southessex.ac.uk](mailto:admissions@southessex.ac.uk)

*Read more at:*

[www.southessex.ac.uk/entry](http://www.southessex.ac.uk/entry)



# How to apply

## ■ Full-time courses

Applications for full-time undergraduate courses should be made through the Universities and Colleges Admissions Service (UCAS) quoting institution code, S43. UCAS's secure online application system is available for applications 24 hours a day.

If you need help or advice on your application, contact a careers adviser or call UCAS's Customer Service line on **+44 (0) 871 468 0 468** (Monday to Friday, 08:30 – 18:00, GMT).

You can also email general questions to UCAS at:

**[enquiries@ucas.ac.uk](mailto:enquiries@ucas.ac.uk)**

or write to:

**Customer Service Unit  
UCAS  
PO Box 28  
Cheltenham  
GL52 3LZ**

## ■ Part-time courses

Applications for part-time undergraduate courses should be made directly to the College using the online application form on our website. Alternatively, contact us to request a paper application form.

## ■ When should I apply?

For entry in September 2014 you should submit your application to UCAS between mid-September 2013 and mid-January 2014. However, we recommend you do this as early as possible as this will give you the best possible chance of securing a place on your chosen course. Applications submitted after 15th January 2014 are subject to availability of places. Applicants from outside the EU should submit their applications to UCAS no later than 30th June 2014.

## ■ Clearing

Applications submitted from the end of June 2014 will be entered by UCAS into 'Clearing'. Be aware that any courses that are oversubscribed will not be available for Clearing. For more about Clearing visit **[www.ucas.com](http://www.ucas.com)**

## ■ How is my application processed?

Each application is considered individually. Applicants for some courses may be required to attend an interview. If this is the case full details of expectations and the process are provided as part of the entry profile with UCAS. Art and Design (including Photography) applicants will also need to present a portfolio of work and some media courses may require auditions. Courses that require regular access to children and vulnerable adults will be required to pass a DBS and/or health check.

## ■ Additional contextual data

The College has robust and equitable admissions procedures based on all relevant academic and personal circumstances, as outlined in the application form and/or in subsequent correspondence. We carefully consider academic qualifications, the personal statement, the reference, the results of any additional tests if appropriate and the outcome of any interview as required. We aim to ensure that potential and suitability for study are thus identified.

Any further contextual information, for example that of care leavers and parental education, that is or may become available from UCAS forms, may be used to supplement the overall picture of a candidate, but no single piece of such information will, on its own, be conclusive in an admission decision. The additional information will be useful in terms of ensuring that adequate support is provided to students once they are on the course and will assist us in ensuring that our activities in terms of outreach and widening participation are effective.

## ■ How do I accept a place?

UCAS will give you the option to accept one offer as your firm (first) choice and one offer as your insurance (second) choice via 'Track'. You do not need to contact us directly with your decision as we will be informed by UCAS, but if you have any queries before you make your final decision please contact the admissions office.

## ■ What happens when I get my results?

If your offer is conditional on examination results and you meet the conditions, we will confirm your place. If your results do not quite meet the conditions, we will ask the admissions tutors to review your application. All copies of qualifications should be scanned and emailed to: **[admissions@southessex.ac.uk](mailto:admissions@southessex.ac.uk)** or sent to our freepost address:

**HE Admissions  
South Essex College  
Freepost SMU 110  
Luker Road  
Southend-on-Sea  
Essex SS1 1BR**

## ■ Applicants with disabilities or learning difficulties

Applications from students with disabilities are considered on the same academic criteria as all other applicants. If you have a disability, including mental health difficulties and specific learning difficulties, you should declare this on your UCAS application so that early consideration can be given to any additional support you may require. In order to assess your support needs, you will then be contacted during the application process by our HE Support Coordinator.

## ■ Contact the Admissions team

Telephone: **0845 52 12345**  
email: **[guidance@southessex.ac.uk](mailto:guidance@southessex.ac.uk)**

*Read more at:*

**[www.southessex.ac.uk/applying](http://www.southessex.ac.uk/applying)**

# Alumni Association

Graduation isn't the end of the story. We're interested in hearing from all of our graduates and via our free Alumni Association you can take advantage of exclusive benefits such as:

## ■ Networking opportunities

Attend exclusive networking events and connect with industry professionals, employers and your fellow alumni. Whether it's putting yourself forward for a job vacancy, asking for opinions and career advice or just swapping stories, our networking events are the ideal opportunity to do this.

## ■ Advice, support and help with career planning

You can take advantage of our careers service for up to three years after you graduate. This free service offers valuable career and financial advice, a CV checking service and access to our exclusive job vacancy bulletin.

## ■ Invitations to alumni events and exhibitions

Each year we organise a series of events covering everything from continuing professional development, industry insights, reunions and exhibitions. These events aim to inspire, inform and entertain. These events are also great opportunities to network, swap ideas and promote your skills.

## ■ Regular e-newsletter

Be sure not to miss out on anything alumni-related by signing up to our e-newsletter. Sent direct to your inbox/smartphone/tablet, content includes the latest news on forthcoming events, guest speakers and networking events. Inspirational alumni profiles are included in many of the newsletters.

Read more at:

[www.southessex.ac.uk/alumni](http://www.southessex.ac.uk/alumni)

# UCAS tariff table

For more about higher education entry requirements, see [www.southessex.ac.uk/he](http://www.southessex.ac.uk/he)  
You can also view more extensive tariff tables at [www.ukcas.com](http://www.ukcas.com)

A level results		
Grade	AS level	A level (A2)
A*	140 points	70 points
A	120 points	60 points
B	100 points	50 points
C	80 points	40 points
D	60 points	30 points
E	40 points	20 points

BTEC Level 3 Nationals (QCF)				
Result	Extended Diploma	Diploma	Subsidiary Diploma	Certificate
D*D*D*	420			
D*D*D	400			
DDD	380			
DDM	360			
DMM	280			
MMM	240			
MMP	200			
MPP	160			
PPP	120			
D*D*		280		
D*D		260		
DD		240		
DM		200		
MM		160		
MP		120		
PP		80		
D*			140	70
D			120	60
M			80	40
P			40	20

Subject	Level	UCAS course code	UCAS points for entry	How long?	Campus*
<b>Business Studies</b>	CertHE	N102	80	1 year f/t	Southend
	BA (Hons)	N100	160	3 years f/t	
<b>Computer Games Design</b>	BSc (Hons)	WG24	160	3 years f/t	Southend
<b>Construction Management</b>	FdSc	5825 (p/t)	80	3 years p/t	Thurrock
<b>Costume and Textiles†</b>	FdA	W231	160	2 years f/t	Thurrock
	BA (Hons)	TBC	Complete FdA course	1 year f/t (progression from FdA)	
<b>Counselling</b>	FdA	B940	60	2 years f/t	Southend
	BA (Hons)	B941	Complete FdA course	1 year f/t (progression from FdA)	
<b>Creative Writing for Media</b>	CertHE	W801	120	1 year f/t	Southend
	DipHE	W800	120	2 years f/t	
	BA (Hons)	WP83	160	3 years f/t	
<b>Criminology and Forensic Investigation</b>	BSc (Hons)	LF64	160	3 years f/t	Southend
<b>Digital Animation</b>	BA (Hons)	W615 BA DA	160	3 years f/t	Southend
<b>Early Years Education</b>	BA (Hons)	X310	160	3 years f/t	Southend
<b>Fashion, Communication and Marketing</b>	FdA	WN25	40	2 years f/t	Southend
	BA (Hons)	WN2M	Complete FdA course	1 year f/t (progression from FdA)	

Our higher education programmes are validated by the University of Essex. \*Subject to validation. † Applications for full-time courses should be made through UCAS. For part-time courses, please apply direct to the College. \*Some courses may involve an element of study at other campus locations.

Subject	Level	UCAS course code	UCAS points for entry	How long?	Campus*
<b>Fashion Design</b>	CertHE	W232	120	1 year f/t	Southend
	DipHE	W233	120	2 years f/t	
	BA (Hons)	W220	160	3 years f/t	
<b>Fine Art</b>	CertHE	W101	40	1 year f/t	Southend
	DipHE	W102	40	2 years f/t	
	BA (Hons)	W100	160	3 years f/t	
<b>Graphic Design</b>	CertHE	W214	40	1 year f/t	Southend
	DipHE	W215	40	2 years f/t	
	BA (Hons)	W210	160	3 years f/t	
<b>Hospitality Management†</b>	CertHE	N864	160	1 year f/t	Southend
	FdSc	N862	160	2 years f/t	
	BSc (Hons)	N865	160	1 year f/t (progression from FdSc)	
<b>Interior Design</b>	CertHE	W251	40	1 year f/t	Southend
	DipHE	W252	40	2 years f/t	
	BA (Hons)	W250	160	3 years f/t	
<b>Journalism</b>	BA (Hons)	P500	280	3 years f/t	Southend
<b>Music Performance, Production and Composition</b>	Cert HE	013W	120	1 year f/t	Southend
	DipHE	113W	120	2 years f/t	
	BA (Hons)	W312	160	3 years f/t	

Our higher education programmes are validated by the University of Essex. \*Subject to validation. † Applications for full-time courses should be made through UCAS. For part-time courses, please apply direct to the College. \*Some courses may involve an element of study at other campus locations.

Get full details of all our courses and general information about higher education at [www.southessex.ac.uk/he](http://www.southessex.ac.uk/he)

Subject	Level	UCAS course code	UCAS points for entry	How long?†	Campus*
Music Production	CertHE	213W	120	1 year f/t	Southend
	DipHE	313W	120	2 years f/t	
	BA (Hons)	W310	160	3 years f/t	
Network Technology	FdSc	G560	40	2 years f/t	Thurrock
	BSc (Hons)	G421	Complete FdSc course	1 year f/t (progression from FdSc)	
Performance	CertHE	WL40	120	1 year f/t	Southend
	DipHE	WK70	120	2 years f/t	
	BA (Hons)	W470	160	3 years f/t	
Photography	CertHE	W643	120	1 year f/t	Southend
	DipHE	W641	120	2 years f/t	
	BA (Hons)	W642	160	3 years f/t	
Production for Live Performance and Events	CertHE	W431	120	1 year f/t	Southend
	FdA	W430	120	2 years f/t	
Social Studies	CertHE	043L	60	1 year f/t	Southend
	DipHE	143L	60	2 years f/t	
	BSc (Hons)	L340	160	3 years f/t 6 years p/t	
Social Work	BA (Hons)	L500	240	3 years f/t	Southend

Our higher education programmes are validated by the University of Essex. \*Subject to validation. † Applications for full-time courses should be made through UCAS. For part-time courses, please apply direct to the College. \*Some courses may involve an element of study at other campus locations.

Subject	Level	UCAS course code	UCAS points for entry	How long?†	Campus*
Special Education Studies	BA (Hons)	X161	160	3 years f/t	Southend
Sports Studies	CertHE	C600	120	1 year f/t	Southend
	DipHE	C602	160	2 years f/t	
	BSc (Hons)	C601	160	3 years f/t	
Television Production and Screen Media	BA (Hons)	P320	160	3 years f/t	Southend

### Specialist teacher training qualifications

Subject	Level	UCAS course code	How long?†	Campus*
<b>Certificate in Education</b> (Learning and Skills Sector)	Cert Ed		2 years p/t University of Essex	Southend
<b>Professional Graduate Certificate in Education</b> (PGCE) (Learning and Skills Sector)	PGCE		2 years p/t University of Essex	Southend
<b>Additional Diploma in Teaching English in the Lifelong Learning Sector</b>	Level 5	5627	1 year p/t City & Guilds	Southend
<b>Diploma in Teaching in the Lifelong Learning Sector</b>	Level 5	5624	2 years p/t City & Guilds	Basildon / Southend

**Disclaimer:** Although great care has been taken in compiling this prospectus, it is for general guidance of prospective students only. The College cannot guarantee the provision of all the courses and services in the event of circumstances beyond its control and therefore reserves the right to make changes or cancel any course or module without notice, should this become necessary. The information in this prospectus is believed to be accurate at the time of publication however changes may be made at a later date. The courses offered by South Essex College are under constant review and development, so students and their representatives should always contact the College directly for the most up-to-date information. [www.southessex.ac.uk](http://www.southessex.ac.uk)

Our higher education programmes are validated by the University of Essex. \*Subject to validation. † Applications for full-time courses should be made through UCAS. For part-time courses, please apply direct to the College. \*Some courses may involve an element of study at other campus locations.

Get full details of all our courses and general information about higher education at [www.southessex.ac.uk/he](http://www.southessex.ac.uk/he)

# Open Events

5pm to 8pm\*  
and  
11am to 2pm\*

## Southend Campus

Luker Road, SS1 1ND

Saturday 27th April\* 2013

Wednesday 2nd October\* 2013

Saturday 12th October\* 2013

Tuesday 19th November\* 2013

Thursday 6th March\* 2014

Thursday 8th May\* 2014

Saturday 26th April\* 2014

## Thurrock Campus

Woodview, RM16 2YR

Tuesday 15th October\* 2013

Wednesday 15th January\* 2014

Thursday 22nd May\* 2014



south essex college

FURTHER & HIGHER EDUCATION

Skills | Education | Careers

working in partnership with



University of Essex

### Alternative formats

This prospectus can be made available in large print, audio and Braille formats upon request. Please contact Student Services at the College for further information.

### Produced by

Alex Norman, Andy Havard  
(Marketing & Communications team)

### Photography by

Richard Ingham, Paul Tait, Stephen Watts,  
Visitessex.com, Southend-on-Sea Borough Council

© South Essex College of Further & Higher Education (March 2013)