



University Centre  
**Southend &  
Thurrock**

---

Technical and vocational excellence

---

**Higher Education  
Prospectus 2016-17**  
Part of South Essex College



# University Centre Southend & Thurrock

---

Technical and vocational excellence

---

Part of South Essex College

---



Working in partnership with

---



# Qualifications Explained

Read  
more at

---

[www.southessex.ac.uk/higher-education](http://www.southessex.ac.uk/higher-education)

## CertHE

---

A Certificate of Higher Education (CertHE) is awarded after successfully completing one year of full-time study at a university or other higher education institution, or two years of part-time study.

## DipHE

---

A Diploma of Higher Education (DipHE) is awarded after two years of full-time study. The Diploma certifies that a student has achieved a minimum standard for 2nd Year courses.

## BA (Hons)

---

A Bachelor of Arts, BA (Hons), is a bachelor's degree awarded for an undergraduate course or programme that follows a humanities curriculum.

## BSc (Hons)

---

A Bachelor of Science, BSc (Hons), is a bachelor's degree awarded for an undergraduate course or programme in science-based or technical studies.

## FdA or FdSc

---

Foundation degrees (FdA or FdSc) aim to provide knowledge in a subject that enables the holder to go on to employment or further study in that field. Foundation degree holders often top-up to a full Honours Degree award.

## HNC and HND

---

Higher National Certificates (HNC) and Higher National Diplomas (HND) are job-related qualifications. HNCs and HNDs are a mix of academic and hands-on practical and vocational learning that will develop the skills you need in the workplace. If completed, the HNC can be topped up to an HND, which can lead to the third year of a degree.



UK Quality Assured

*Reviewed 2011*

# Course Listings & Contents

| Art & Design                            | Media  | Contents   |
|---|--|--|
| Costume Construction (ROH)* 6           | Computer Games Design 34   | Higher Education 66                                    |
| Fashion Design 8                        | Digital Animation 36   | Why choose University Centre Southend and Thurrock? 68 |
| Fashion, Communication and Marketing 10 | Journalism 38  | Essex 70   |
| Fine Art 12                             | Music Performance, Production & Composition 40                               | The Forum 71   |
| Graphic Design 14                       | Music Production 42  | Southend & Thurrock 72                                 |
| Interior & 3D Design 16                 | Performance 44   | How to apply 74  |
| Photography 18                          | Performance (Dance) 46   | Fees and funding 76                                    |
| <b>Business</b>                         | Production for Live Performance and Events 48                                | Accommodation 77                                       |
| Business Studies 20                     | Television Production and Screen Media 50                                    | Entry requirements 78                                  |
| <b>Construction</b>                     | <b>Science</b>   | FAQ 79   |
| Construction & the Built Environment 22 | Applied Biology 52   | International students 80                              |
| <b>Engineering</b>                      | Criminology & Forensic Investigation 54                                      | Supporting your success 81                             |
| General Engineering 24                  | <b>Sport</b>   | Student Union 82                                       |
| <b>Health and Social Care</b>           | Sports Studies 56  | University of Essex 83                                 |
| Counselling 26                          | <b>Teaching</b>  | Open Events 88   |
| Psychology & Sociology 28               | Certificate in Education (Learning & Skills sector) 58                       | Application Form 89                                    |
| <b>Hospitality</b>                      | Early Years Education 60   |  |
| Hospitality Management 30               | Professional Graduate Certificate in Education (Learning & Skills sector) 62 |  |
| <b>Information Technology</b>           | Special Education Studies 64   |  |
| Computing & Systems Development 32      |  |  |

For more information on all of our courses, funding and support visit: [www.southessex.ac.uk/higher-education](http://www.southessex.ac.uk/higher-education)

\* Subject to validation

# Costume Construction (Royal Opera House)

**Course code:** BA (Hons) - TBC Please call us on **0845 52 12345** for further details **Venue:** High House Production Park, Purfleet  
**Duration:** Three years (full-time) **Cost:** £9,000\*

## Why should I do this course?

A unique opportunity in partnership with the Royal Opera House. Combining all the expected areas of study with the additional benefits of working alongside professionals from one of the most prestigious theatres in the world. The course emphasises the cut and construction techniques for costume in the following areas: theatre, opera, dance, musical theatre, production arts, film and television.

Work-related learning is uppermost and includes live projects, competitions, vocational projects and work experience placements. Visits are organised to exhibitions, galleries and professional studios. The course includes workshops from professionals from the Royal Opera House. The course leaders also work with local employers to ensure that students gain a broad understanding of the creative industries to enhance employment prospects. The course will be delivered from specialist workshops in the new Bob and Tamar Manoukian Costume Centre at the High House Production Park in Purfleet, the first national centre of excellence for technical and backstage skills which is also home to The Backstage Centre and Acme Studios, High House Artists' Studios.

## What's covered?

**Year one:** the first year of the programme will introduce you to concepts of design, pattern cutting and garment production techniques.

### Areas of study:

- introduction to industrial sewing machines, irons and over-lockers
- fabric types and properties
- using basic blocks and flat pattern cutting
- essential hand sewing techniques
- history of costume dress
- critical thinking and writing
- introduction to script analysis and character breakdown
- costume drawing and illustration
- practical experimental exploration
- colour mixing and dyeing methods
- breakdown, ageing and distressing techniques
- print design and application

**Year two:** expanding on your learning in the first year, year two offers opportunities to work with live briefs and undertake work placements.

### Areas of study:

- working with a set designer to explore the effects of lighting on a costume
- differences in costume design for theatre, film and television

## How will my work be assessed?

You will be regularly assessed both formally and informally on your production including practical work, technical folders, essays, research, design development, technical drawings and illustrations, textiles directory and samples, work placement blog, sketchbook, portfolio and final pieces.

- performer and staging constraints and effective costume solutions
- produce a fully finished garment supported by a technical folder
- self-drafted patterns to perfectly fit a unique body
- 3D pattern cutting and draping on the stand
- correct application of construction and finishes for costume
- consideration of movement for performer
- deconstruction of garment
- alterations and purpose fit
- flexible construction methods to suit more than one performer
- chemical fluids for the cleaning process of costumes
- using referencing, recording and documenting for historical costume archiving

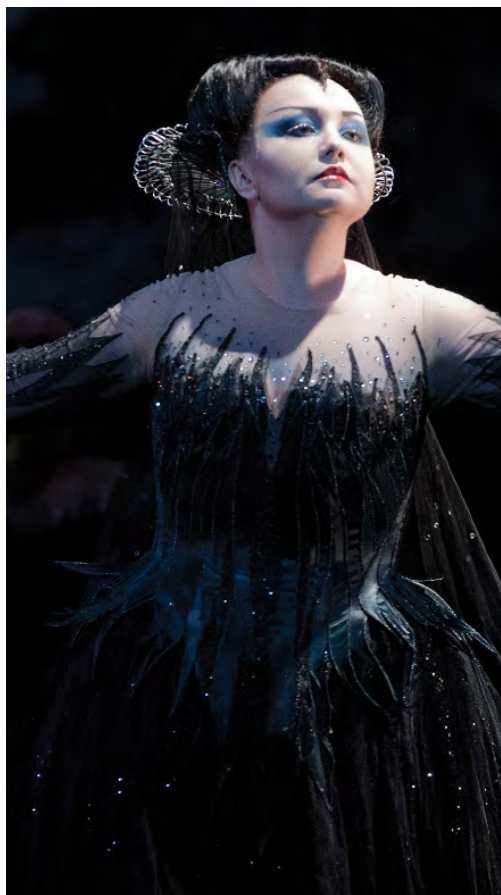
**Year three:** you will undertake a final extended project of your own design which is supported by written elements and a visual portfolio of work.

### Areas of study:

- extended project
- produce a professional portfolio
- final major project resulting in three fully completed costumes
- end of year final degree show to showcase your work in front of professionals in the industry

\*per academic year for home and EU students.

**Images clockwise from top left:** Akane Takada in Emeralds © ROH - Bill Cooper / Matthew Golding as Oberon in The Dream © ROH - Bill Cooper / Albina Shagimuratova as Queen of the Night in Die Zauberflöte / Carmen Giannattasio as Elisabetta in Maria Stuarda



ROYAL  
OPERA  
HOUSE

### Entry requirements

---

You will need a minimum of 160 UCAS points from one or more of the following:

- at least two A-levels
- BTEC Level 3 Extended Diploma/Diploma/Subsidiary Diploma/Certificate [QCF]
- BTEC National Award/Certificate/Diploma [NQF]
- International Baccalaureate
- AQA Baccalaureate
- Progression Diploma
- Advanced Diploma
- you will also need English and maths GCSE at grade C or above OR Level 2 equivalent (such as functional skills/learnirect)
- a portfolio-based interview. Portfolios should include examples of recent project work and may reference a variety of media. You must also be able to talk about recent shows and exhibitions you have seen.

📌 Mature students with relevant work experience may be offered a place on the course purely on the strength of their portfolio and relevant experience.

### What can I do after this?

---

Gain a career in a variety of roles including costume construction, costume design, touring theatre, textiles, dying and breaking down, women's wear, menswear, tailoring, prop costume, running wardrobe, costume conservation and restoration.

# Fashion Design

**Course code:** CertHE W232, DipHE W233, BA (Hons) W220 **Venue:** Southend

**Duration:** CertHE One year, DipHE Two years, BA (Hons) Three years (full-time) **Cost:** £7,000\*

## Why should I do this course?

The UK fashion industry consists of over 800,000 people. This programme will provide you with the skills necessary to enter this exciting and lucrative industry. Graduates can go into design, pattern cutting, production, buying, merchandising, styling, retail management and garment technology.

The College has design and print studios and a computer design suite. You will work in a specialist fashion studio with industry-standard equipment.

Our staff are experienced designers, makers and artists, and are well supported by our technical staff. The campus also accommodates artists-in-residence who work closely with students to offer their creative and professional experience.

You will be encouraged to take part in student design competitions such as Royal Society for the Encouragement of Arts (RSA) and as part of the studies, all final year students take part in a degree show exhibiting their work in London. Visits are organised to exhibitions, galleries and professional studios to provide exposure to industry practice. Guest speakers are also invited onto campus. International trips are available including Amsterdam, New York and Paris.

## What's covered?

**Year one:** the first year of the course will introduce you to concepts of design, pattern cutting (2D) and garment production techniques that will give you the foundation you need as preparation for study in years two and three. Underpinning this critical knowledge will be thorough theoretical and cultural research and referencing skills.

**Areas of study:** design practice, pattern cutting, garment construction, digital application, cultural and contemporary studies, drawing techniques.

**Year two:** expanding on your learning in the first year, further 2D pattern cutting is explored, alongside 3D pattern cutting and draping on the stand. You will also explore advanced garment production techniques alongside fashion illustration and CAD and you are encouraged to develop your own areas of independent research through open-ended briefs.

Opportunities for 'live' project briefs, including the chance to enter national and international competitions, are included, as well as further educational visits. Specialist modules introduce computer-aided manufacture, using industry-standard Gerber pattern cutting software.

**Areas of study:** creative pattern cutting, advanced design application, fashion illustration, computer aided manufacturing - Geber technology, cultural and contemporary practice.

**Year three:** in your final year you will consolidate your learning and identify an area of personal research through a self-directed brief. The production of a final collection is supported by a fabric resourcing module and a dissertation. In this culminating period of the programme, you will develop a firm understanding of your position within the discipline of fashion design. Guest speakers, visiting lecturers and professional development workshops and seminars help to prepare you for starting a career in the industry. The year culminates in a final year degree show which allows you to showcase your work and demonstrate your own qualities in the context of the fashion industry.

**Areas of study:** final major project – self directed, an academic dissertation, professional practice.

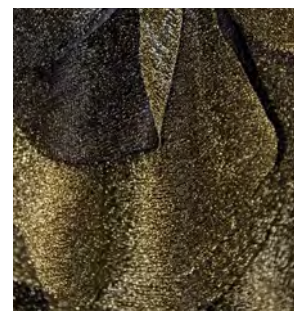
## How will my work be assessed?

**Teaching methods:** you will have a timetable of approximately 13 hours per week, but will be expected to devote 40 hours per week to your studies. This means that the majority of your work will be self-directed, enabling you to work independently and in control of your own progress.

The course is taught through a series of projects including practical subjects in fashion textile design with an emphasis on the design and production of garments. The curriculum is supported by critical and theoretical study.

**Assessment methods:** individual and group projects encompassing design work and realisation, presentations, business reports and written essays. These assignments are designed to give you relevant work experience, and to help you build a professional portfolio that will help you secure graduate employment.

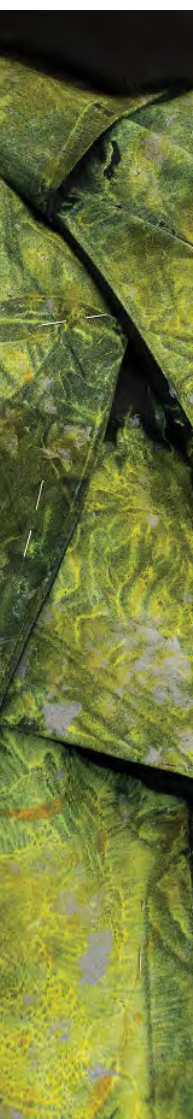




## Entry requirements

For BA (Hons) you will need 160 UCAS points from one or more of the following:

- at least two A-levels
- BTEC Level 3 Extended Diploma/Diploma/Subsidiary Diploma/Certificate [QCF]
- BTEC National Award/Certificate/Diploma [NQF]
- International Baccalaureate
- AQA Baccalaureate
- Progression Diploma
- Advanced Diploma
- you will also need English and maths GCSE at grade C or above OR Level 2 equivalent (such as functional skills/learnirect)



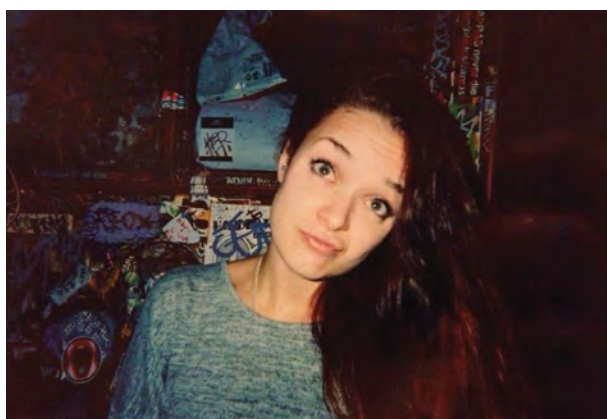
## Alumni

### Hannah Messent

I graduated with a first class degree in Fashion Design and on leaving I completed internships at Religion and Miss Selfridge.

I got my first full-time design assistant role at a tailoring and outerwear suppliers and then went on to freelance work for a womenswear jersey and print suppliers. I have progressed from junior to senior designer.

Because I am freelance I have the freedom and flexibility to do projects and jobs that excite me. The University Centre gave me a good grounded knowledge of everything that goes into making a garment, from design to finish and allowed me to grow as a designer and a person whilst learning the skills I needed.



You will also be required to demonstrate your suitability for the programme via a portfolio based interview. Portfolios should include examples of recent project work and may reference a variety of media.

🔴 Mature students may be offered a place on the programme purely on the strength of their portfolio and relevant experience.

## What can I do after this?

You will be equipped to work in roles such as designer, buyer, merchandiser, illustrator, colourist, journalist or stylist. More diverse careers include wardrobe consultancy, costume for film, TV and theatre, or interior design. You could also progress to postgraduate studies.



# Fashion, Communication and Marketing

**Course code:** FdA WN25, BA (Hons) WN2M **Venue:** Southend

**Duration:** FdA Two years (full-time), BA (Hons) Three years (full-time) **Cost:** £7,000\*

## Why should I do this course?

The FdA course, which offers the option to top-up to a full BA (Hons), recognises and embraces the changing technologies in fashion's visual communication and marketing areas. You will develop an understanding of marketing and promotion, how to place concepts in the market place through marketing strategies, develop a personal signature within illustration, expand your skills through both written and visual information and gain an understanding of competitors nationally and internationally.

## What's covered?

**Year one:** the first year offers you the opportunity to develop skills in visual communication, fashion photography, styling, promotion through media development and fashion illustration.

Projects will take the form of 'live' project briefs set by industry or national competitions, all of which are underpinned by theoretical and cultural research and referencing. Intellectual and cognitive skills are fostered through seminars, tutorials and group discussion, encouraging creative thought and practice.

You will also have the opportunity to discuss key design issues, concepts and the principles of design texts and materials.

**Areas of study:** cultural context, fashion illustration and photography, visual communication, fashion media, fashion styling, marketing.

**Year two:** the second year will expand on the skills gained in the previous year and introduce new subjects such as digital image, marketing strategy, digital solutions and work placement, which will be attached to 'live' project briefs.

The skills you learn will enable you to identify an area of study to develop for a personally-directed project.

Previous projects include the creation of short films, designing a magazine, web design and creating promotional materials and products using styling and photography, some of which have been directly linked to students' work placement modules.

**Areas of study:** cultural context, digital solutions and marketing strategies, work placement, personally directed project and a work placement module.<sup>1</sup>

**Year three:** this optional top-up year is devoted to two major tasks: the production of a substantial piece of academic writing (marketing report) and your final major project.

In this culminating period of the programme, you are expected to attain a maturity within your practice and demonstrate a firm understanding of your position within the discipline, this is also supported by a professional studies module. The final year degree show is designed to provide you with the opportunity to demonstrate your own qualities as professional fashion communicators to the wider world.

**Areas of study:** dissertation, contemporary practice, final major project, external sourcing, marketing, professional development.

## How will my work be assessed?

**Teaching methods:** modules are delivered through a variety of methods of teaching and learning. These will include:

- technical demonstrations - designed to provide essential inductions to fashion, print and graphics resources and to support the acquisition of essential skills
- small group teaching - studio based group sessions which are led by a tutor
- group 'crits' - will usually occur towards the end of a module before assessment
- individual tutorials - the tutor will ask key questions regarding your project and offer advice and suggestions regarding future development
- independent research and studio practice - during the module you will be expected to follow up on suggestions regarding project direction

**Assessment methods:** coursework is assessed in a range of different ways in order to accommodate a variety of learning styles and aptitudes, including portfolio and sketchbook submissions, group presentations, written essays and research folders.

### <sup>1</sup> Previous work placements have included:

- Wonderland magazine
- Oh My Love head office
- Beau Loves head office
- Osman design office
- Bland to Brand graphic design





## Entry requirements

For the FdA you will need 40 UCAS points, made up from:

- A-levels, preferably in art and design
- BTEC National Diploma with a minimum of pass profile
- Access to Higher Education Diploma Level 3 with a 60% pass rate
- Higher National Diploma (for possible direct entry onto year two)
- Foundation Diploma in Art and Design Level 4
- other qualifications will be considered on an individual basis

• If you are a mature student and have worked independently for a significant period, we may be able to offer you a place on the Fashion Communication and Marketing programme purely on the strength your portfolio interview. In addition, you will also need GCSE grade C or above (or equivalent) in English and maths. You are also expected to demonstrate a portfolio of work at interview.

## What can I do after this?

Having developed your intellectual curiosity, creativity and imagination, you will be equipped for diverse and exciting careers within fashion photography, styling, graphic design, buying, fashion marketing and promotion.

## Alumni

### Bex Koppit

I did my BTEC in fashion and clothing and then a BA degree in fashion communication and marketing.

Straight from University Centre Southend I went on to design for a clothing company called The Ragged Priest and I am now their head designer. My job entails trend prediction/analysis, design, fabric sourcing, overseeing product development, costing & sales analysis and managing a design team across different product areas including menswear, womenswear and accessories. I have been lucky enough to have my designs worn by the likes of Rihanna, Beyonce and Jessie J.

I loved my tutors and really felt that they helped to nurture my skills into something I can actually utilise.

My time at University Centre Southend was invaluable to me. If you want to get taught by people who genuinely care about what you want to do and who you want to be then University Centre Southend is for you.



# Fine Art

**Course code:** CertHE W101, DipHE W102, BA (Hons) W100 **Venue:** Southend

**Duration:** CertHE One year, DipHE Two years, BA (Hons) Three years (full-time) **Cost:** £7,000\*

Fine Art

## Why should I do this course?

Fine artists continually challenge ideas, inviting society to broaden its attitudes and encourage a healthy level of debate and change. This programme provides graduates with a broad knowledge of fine art across a range of mediums from painting, drawing, sculpture, and printmaking, to video, performance and photography.

You will benefit from visiting artists and guest speakers and a range of work-related projects with local museums, galleries and voluntary organisations. In addition, you also get the opportunity to organise and participate in public art exhibitions.

## What's covered?

**Year one:** the first year is designed to allow you to engage with the culture of higher education and to equip you with the practical and conceptual skills and the awareness to develop your own creative identity. You will be encouraged to develop experimental, reflective and enquiring approaches to your work. You will also be introduced to the relevant cultural and historical contexts between theory and practice.

**Areas of study:** painting, drawing, printmaking, video, photography, sculpture, installation, contextual studies.

**Year two:** you will gain a greater flexibility in choosing the direction of your own work in studio practice and will be looking to develop a successful personal working methodology in preparation for your final year major project and your dissertation. You will also look at and consider areas and materials of increasing complexity.

Site-specific artwork will challenge your perceptions of artistic production and you will be encouraged to examine the many ways in which an artist can engage with the wider public.

In addition, you will research and actively work towards pursuing a career in your chosen field through the development of an effective portfolio of work. Finally, you will also produce a strategic professional development plan and participate in work experience.

**Areas of study:** studio practice, site-specific artwork, curatorial skills and professional practice.

**Year three:** your final year is dedicated to two major tasks: the production of your dissertation and the development of studio work for your final major project. The final year degree show is designed to provide you with a platform to demonstrate your own qualities as a professional artist or curator.

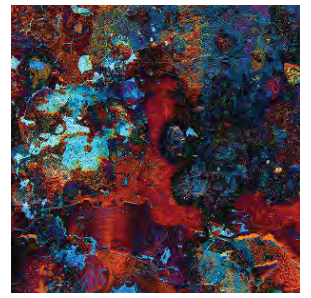
**Areas of study:** dissertation and final major project.

## How will my work be assessed?

Modules are delivered through presentations, essays, group critiques, peer reviews, practical workshops, demonstrations, group visits, guest speakers, individual tutorials and self directed study.

The degree is assessed via a range of practical, written and oral coursework assignments.





## Entry requirements

For BA (Hons) you will need 160 UCAS points from one or more of the following:

- at least two A-levels
- BTEC Level 3 Extended Diploma/Diploma/Subsidiary Diploma/Certificate [QCF]
- BTEC National Award/Certificate/Diploma [NQF]
- International Baccalaureate
- AQA Baccalaureate
- Progression Diploma
- Advanced Diploma
- English and maths GCSE at grade C or above OR Level 2 equivalent (such as functional skills/learnirect)

### Portfolio based interview:

Examples of recent project work that may reference a variety of media such as drawing, painting, print, photography, 3D, mixed media and digital work. Sketchbooks and a written document such as an essay should also be included. Large-scale work should be documented photographically.

📌 If you are a mature student we may be able to offer you a place on the programme purely on the strength of your portfolio interview and relevant experience.

### What can I do after this?

Graduates have gone on to work as freelance artists, art teachers, curators, art critics, gallery directors and video editors.



## Alumni

### Lee Moon

The University Centre is a fantastic place to study and was perfect in preparing me for life after learning. I now work at the University Centre and have my own studio in Southchurch.

The best lesson was being given real life projects to work on. We were quick to realise the hurdles in real life situations and had to overcome them which is something you don't really get if you just do all of your work in the classroom. Had I taken the choice to study elsewhere I honestly don't think I would have done as well as I have now. The facilities at the University Centre and the tutors are simply amazing and certainly played a massive part, but I also think that being older and wiser puts you in a stronger mind set. I would recommend it to anyone – it's never too late.



# Graphic Design

**Course code:** CertHE W214, DipHE W215, BA (Hons) W210 **Venue:** Southend

**Duration:** CertHE One year, DipHE Two years, BA (Hons) Three years (full-time) **Cost:** £7,000\*

## Why should I do this course?

Trained graphic designers interpret cultural, political, expressive, informational and strategic needs and produce visual communications solutions for use in advertising, corporate communications, magazine design, publishing, web design and more. This broad-based degree will introduce you to the role of the professional designer through both digital and traditional graphic design mediums and is carefully designed to develop the core skills and mind-set required for professional practice.

The strength of this course lies in its industry contacts, from our extensive programme of visiting guest lecturers to exciting 'live' project briefs set by experts from prestigious companies such as Universal Studios and Penguin UK. You will benefit from class trips to Europe and the opportunity to participate in professional design events and shows.

## What's covered?

**Year one:** in the first year of the programme you will engage with your degree-level studies and develop your practical and technical skills through exploration and experimentation. You will get an overview of graphic design that will enable you to define the 'fit' for your work. Seminars, lectures and group tutorials also introduce you to the theoretical, cultural and historical contexts of graphic design.

**Areas of study:** illustration, photography, typography, printmaking, design for print and digital mediums such as book covers, posters, digital and display design.

**Year two:** in the second year you will consider visual meanings in more sophisticated terms through self-directed study modules that will challenge you to identify your key interests and devise ways to tailor your skills to further develop your professional practice.

**Areas of study:** typography, digital and experimental design solutions and 3D design to develop responses to industry-led briefs and student award competitions. You will also explore web, print and exhibition design as well as illustration, critical context studies, professional practice and industry research.

**Year three:** the final year of the course focuses on developing your design portfolio in preparation for making the transition to employment. During this year you will focus on two major projects: the production of a substantial piece of academic writing (the dissertation) and a final major project.

The final year degree shows provide you with the opportunity to meet industry professionals who hire graduate graphic designers. There are also opportunities for reflective study to help you fill in any gaps in your knowledge.

**Areas of study:** industry-led student competitions, dissertation, studio led and self-directed projects, participation in degree shows, professional promotion and application of ideas.

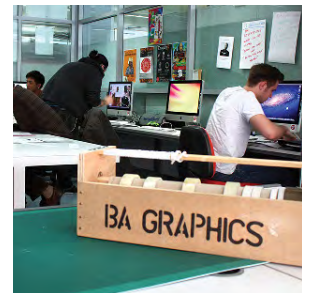
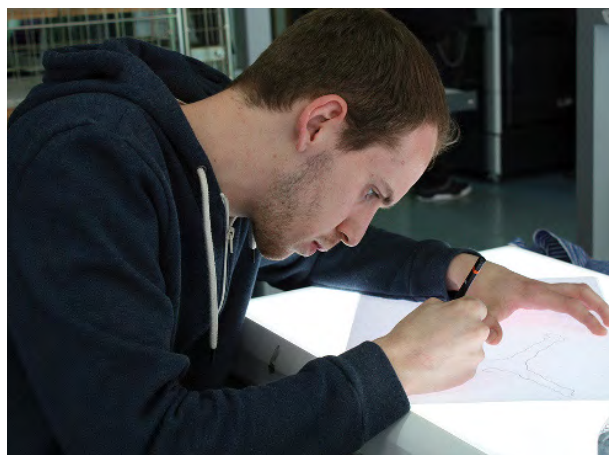
## How will my work be assessed?

**Teaching methods:** modules are delivered through a variety of methods of teaching and learning. These will include:

- technical demonstrations – designed to provide essential inductions to print and graphics resources and to support the acquisition of essential skills
- small group teaching - studio based group sessions which are led by a tutor
- group crits – will usually occur towards the end of a module before assessment
- individual tutorials – the tutor will ask key questions regarding your project and offer advice and suggestions regarding future development
- independent research and studio practice – during the module students are expected to follow up on suggested directions regarding project direction

**Assessment methods:** Coursework is assessed in a range of different ways in order to accommodate a variety of learning styles and aptitudes including portfolio and sketchbook submissions, group presentations, written essays and research folders.





## Entry requirements

For BA (Hons) you will need 160 UCAS points from one or more of the following:

- at least two A-levels
- BTEC Level 3 Extended Diploma/Diploma/Subsidiary Diploma/Certificate [QCF]
- BTEC National Award/Certificate/Diploma [NQF]
- International Baccalaureate
- AQA Baccalaureate
- Progression Diploma
- Advanced Diploma
- you will also need English and maths GCSE at grade C or above OR Level 2 equivalent (such as functional skills/learnirect)

You will also be required to undertake a portfolio-based interview. Portfolios should include examples of recent project work and may reference a variety of media.

• If you are a mature student we may be able to offer you a place on the programme purely on the strength of your portfolio interview and relevant experience.

## What can I do after this?

Many of our graduates find employment with design studios or set up as freelance designers for design studios, advertising agencies, publishing houses, printing firms or web and digital design studios. Others choose to further their studies through postgraduate education.

## Alumni

### Phil Steed

I gained a first class honours degree in Graphic Design. I have my own design company and worked while I studied.

I primarily work in the corporate communications industry and have won various awards in my industry. I made lots of new friends and I received a good education. It was good because it was local which gave me time to work and study.



# Interior & 3D Design

**Course code:** CertHE W251, DipHE W252, BA (Hons) W250 **Venue:** Southend

**Duration:** CertHE One year, DipHE Two years, BA (Hons) Three years (full-time) **Cost:** £7,000\*

Interior & 3D Design

## Why should I do this course?

Interior & 3D Design is concerned with the creative construction and organisation of space and 3D objects that fill our everyday environments. These 3D & spatial designers bridge the gap between town planners and architects and the communities who live and work within designed spaces.

This course offers strong industry links with a programme of exciting 'live' projects and opportunities for work placements which often result in job offers at the end of the programme. Students will work in two and three dimensions and have a passion for creative problem solving.

## What's covered?

**Year one:** the subjects studied in the first year form a firm foundation for the specialist subjects studied during years two and three. You will learn core skills in technical drawing and visual research, including photography and digital manipulation techniques, plus 3D model-making and construction techniques.

The projects you will undertake during year one teach the desired skills in a variety of creative contexts and allow you to gain confidence in the development, fabrication and communication of your design ideas.

You will develop technical drawing skills using CAD and practice image manipulation using Photoshop and 3DS Max. You will also study observational drawing, model making, report writing and conduct industry research.

**Areas of study:** technical drawing and materials processes, visual research, design concepts and principles, construction technology, 3D and spatial design studies.

**Year two:** this year refines the skills learnt in year one and covers a range of subject specific projects including retail, exhibition and restaurant design. Model-making underpins the practical processes, whilst a strong emphasis is placed on the use

of CAD drawing and visualisation software.

'Live' projects with industry contacts enrich the curriculum, giving you invaluable industry experience.

**Areas of study:** retail design, exhibition design, industry research and professional development, cultural context, interior model-making, building conversion and adaptation, literature reviews and dissertation proposals.

**Year three:** this is the most challenging year as you showcase your individual creative skills in a final major project that aligns with your interests on the course. This comprises a feasibility report outlining initial research and planning, a design portfolio and presentation portfolio which culminate in the degree show in which you present your work in an exhibition. Through the planning and production of this final project, you have the opportunity to focus your academic skills prior to entering the workplace.

**Areas of study:** dissertation, final major project comprising a feasibility report, architectural model-making, professional practice.

## How will my work be assessed?

You will have a timetable of approximately 13 hours per week but will be expected to devote 40 hours per week to your studies.

The course is delivered largely in practical design centres, drawing studios and 3D workshops, with staff frequently working with you individually, helping you to develop your own unique design style and identity.

**Assessment methods:** you will create a range of individual and group projects to provide you with relevant experiences of work and help you build an impressive professional portfolio to help you secure graduate employment.





## Entry requirements

For BA (Hons) you will need 160 UCAS points from one or more of the following:

- at least two A-levels
- BTEC Level 3 Extended Diploma/Diploma/Subsidiary Diploma/Certificate [QCF]
- BTEC National Award/Certificate/Diploma [NQF]
- International Baccalaureate
- AQA Baccalaureate
- Progression Diploma
- Advanced Diploma
- you will also need English and maths GCSE at grade C or above OR Level 2 equivalent (such as functional skills/learnirect)

You will also be required to demonstrate your suitability for the programme via a portfolio based interview. Portfolios should include examples of recent project work and may reference a variety of media.

📌 If you are a mature student and have worked independently for a significant period, we may be able to offer you a place on the programme purely on the strength of your portfolio interview and relevant experience.

## What can I do after this?

Find employment through work experience or the contacts made on the course. The range of graduate career destinations is diverse, from working as designers to property development and construction.

## Alumni

### Natalie Holmes

I did a BA (Hons) and before I graduated I happened to go into a kitchen design shop and told them that I was about to finish college and was looking for work.

At first they said that they didn't need anyone, but as I left someone ran after me and within ten minutes I had a job!

I have been working for State Line Kitchens in Southend as their main designer for three years.

The tutors at the University Centre are absolutely amazing and they encouraged me to stay on and study for my degree. They taught me about timescales and working to a deadline which has been vital in my job now. All the computer work we covered I use every day in my job.

I absolutely loved my time at University Centre Southend, the teachers did everything they could to make sure I succeeded.





# Photography

**Course code:** CertHE 643, DipHE W641, BA (Hons) W642 **Venue:** Southend

**Duration:** CertHE One year, DipHE Two years, BA (Hons) Three years (full-time) **Cost:** £7,000\*

Photography

## Why should I do this course?

This programme will give you broad knowledge and experience of advertising and editorial photography, including stills, animated imagery, video and associated post-production techniques.

The degree will provide you with the skills to become a confident and successful contemporary image maker, preparing you for a career within commercial photography, creative media and fine art.

Our tutors are highly experienced with a broad spread of academic, artistic and vocational experience.

Our strong links with local photographic studios, design agencies, a professional printing lab in London, and several galleries will enable you to undertake work experience.

The College has a well-equipped photographic studio, professional darkrooms enabling printing of all camera formats and Apple Mac suites. You will attend group lectures and screenings in the 'Pod' lecture theatre.

You will regularly attend exhibitions in London and have access to a variety of guest speakers and educational trips within the UK and further afield (Europe and USA).

## What's covered?

**Year one:** an introduction to photography and its key concepts, themes, genres and approaches. You will receive both practical and theoretical teaching for still and moving image lens-based media techniques, alongside historical and contemporary appreciation and cultural theory.

You will acquire an understanding of how the advertising, editorial, media industry and fine art sector work together. You will develop an awareness of photography and its uses in contemporary media, art and society whilst acquiring skills in communication, presentation, team work, problem-solving, leadership and project management.

**Areas of study:** photography, time and memory, people and portraiture, still life and location, explore and experiment, narratives in photography, visual persuasion and cultural studies.

**Year two:** specialist modules designed to build upon the broad practical and theoretical knowledge gained in year one. The focus is on deeper development of ideas and concepts. You will work on 'live' projects with clients and enter national professional photography competitions. You will explore career development opportunities and carry out primary research into practitioners that interest you

and the relationship between fine art and commercial practice. You can undertake work experience and explore your emerging specialist areas of photographic practice.

**Areas of study:** professional studies, sound and vision, cultural studies, professional practice, contemporary photographic practice, research methodologies and dissertation proposal.

**Year three:** apply and refine the skills and ideas you have developed in the previous two years. The focus is on developing independent ventures, supporting your final major project and dissertation. You will complete a substantial body of specialist photographic work that will be presented in an exhibition and/or publication. You will also work on producing a professional photographic portfolio that is to be supported by a website and other marketing materials that will help you secure employment or further your studies. The professional development module includes a skills audit, SWOT analysis, personality traits profiling and a thorough exploration of the roles best suited to you.

**Areas of study:** research and formative development, dissertation, professional development, specialist photography practice, exhibition and portfolio.

## How will my work be assessed?

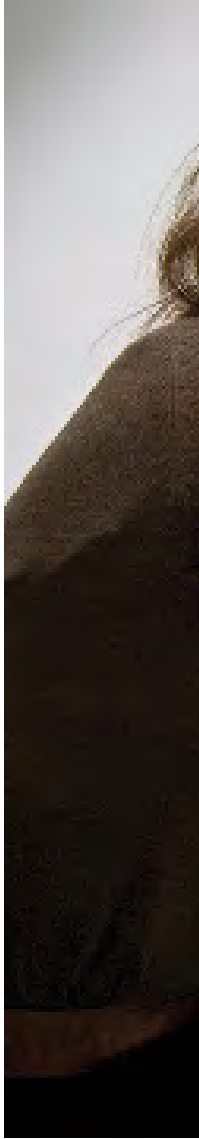
Teaching and learning is delivered through lectures, demonstrations, workshops, presentations, group critiques, peer reviews, essays, group visits and field trips, guest speakers, individual tutorials and self directed study.

You will have the opportunity to present and discuss your work and will receive valuable formative feedback to reflect upon, prior to submission of projects for formal summative assessment.

The degree is assessed via a range of practical, written and oral coursework assignments.

This course is validated by the University of Essex

\*per academic year for home and EU students.





## Alumni

### Emma Langston

I wanted to meet new people and do something a little more interesting than sit behind a desk all day, although when hunting for a new job I realised most professions needed experience, so I decided the best decision was to do a degree. I was clueless on how to apply for university as I had been out of education for four years so I attended the open evening at University Centre Southend to get some advice on where to start.

I found it was so stress free, everyone was incredibly helpful. I chose University Centre Southend over other colleges and universities due to the small classes. The facilities are also a great aspect of the course as we have a fully functioning studio, three darkrooms and a range of equipment to borrow.

I am so pleased I applied as a mature student because it was so easy and I am surprised at the mixed age ranges, not only in photography but in other subjects too.



## Entry requirements

For BA (Hons) you will need 160 UCAS points from one or more of the following:

- at least two A-levels
- BTEC Level 3 Extended Diploma/Diploma/Subsidiary Diploma/Certificate [QCF]
- BTEC National Award/Certificate/Diploma [NQF]
- International Baccalaureate
- AQA Baccalaureate
- Progression Diploma
- Advanced Diploma
- you will also need English and maths GCSE at grade C or above OR Level 2 equivalent (such as functional skills/learnirect)

📌 Applications from mature students who do not possess the entry requirements as listed above, but who possess related professional experience or non-standard qualifications, are welcome. You will need to demonstrate, by interview, admissions test and/or portfolio submission, that you are suitable for the course.

## What can I do after this?

Work as freelancers, artists, assistant photographers, image retouching, post-production, photographer's agents, picture researchers and in design or marketing roles. Graduates have also worked for magazines, photo libraries, the fashion industry, catalogues, press, music and events. Some graduates progress to postgraduate studies.

# Business Studies

**Course code:** CertHE N102, BA (Hons) N100 **Venue:** Southend

**Duration:** CertHE One year, BA (Hons) Three years (full-time) **Cost:** £7,000\*

## Why should I do this course?

Business is a very wide area, and contains elements such as finance, marketing, human resources, business strategy and law. Business knowledge is important because many of us will set up our own business at some stage in our lives. You will be studying current business topics and issues that emphasise the challenging nature of the business environment.

The aim of this degree is to equip you with a solid foundation in business. Studying business provides you with a wide range of opportunities to develop your analytical skills, providing solutions and recommendations for business problems, often based on live case studies. You will also develop appropriate IT skills for business.

## What's covered?

The BA (Hons) Business Studies programme is designed to give you a solid understanding of the subject area in year one. This is built on in year two and by year three you will be much more independent, with a greater emphasis on discussions rather than lectures. The dissertation (double weighted module) in year three allows you to choose a business area that you are interested in, research into it and produce a final document of 8,000 words that can be used to show your capabilities when going for interviews.

**Year one:** you will study a broad range of areas that will give you an insight into business such as finance, human resources, marketing and law. These build firm foundations for the rest of the degree programme, both in terms of knowledge and skills development. There are a number of assessment methods ranging from reports and essays to presentations, seminars and examinations. You will be provided with the support you need to develop the skills necessary for success.

**Areas of study:** managing people, business law, the business environment, event management, quantitative techniques, finance, business planning and marketing.

**Year two:** you will build and expand on your learning in the previous year, focusing on the use of technology in business, economics, human resources and finance.

**Areas of study:** business research, business finance, business technology, organisational behaviour, applied economic theory, entrepreneurship.

**Year three:** this is the most challenging year in terms of content, and you are expected to be more independent than in previous years of study. You will need to be particularly organised and draw on the skills that you have developed throughout the programme. Modules are contemporary and allow for wide discussion. Advanced research (management) and the individual project (dissertation) allow you to research and specialise in a specific element of business that you are interested in, with appropriate guidance from a supervisor.

**Areas of study:** advanced research, individual project, business strategy, operations management and corporate governance.

## How will my work be assessed?

There are a variety of methods on the degree course. In terms of summative assessment (this is formally assessed work that contributes to your grade) most modules require the submission of a coursework assignment.

In the first year coursework will form the majority of marks for the modules (between 70% and 100%).

In years two and three there are examinations for the majority of subjects. In year two examinations are worth 40% and in year three examinations are worth 50%. There is also formative assessment (which does not count towards your final module scores). Formative assessment includes discussions, presentations and seminars.

Throughout your studies you will develop a wide range of skills and techniques to equip you to achieve. These include skills to improve your written arguments and your performance in examinations.





## Entry requirements

---

For BA (Hons) you will need 160 UCAS points from one or more of the following:

- at least two A-levels
- BTEC Level 3 Extended Diploma/Diploma/Subsidiary Diploma/Certificate [QCF]
- BTEC National Award/Certificate/Diploma [NQF]
- International Baccalaureate
- AQA Baccalaureate
- Progression Diploma
- Advanced Diploma
- you will also need English and maths GCSE at grade C or above OR Level 2 equivalent (such as functional skills/learnirect)

## What can I do after this?

---

Our graduates pursue a variety of careers, with many working in areas directly related to their studies such as accountancy or finance related jobs, marketing, retail, human resources, graduate schemes and teaching.

## Student

---

### Sally Christian

My name is Sally Christian, I am 27 and in the second year of my Business Studies degree.

Through my tutor I am doing an internship at the European Commission in Brussels. The internship involves organising a two-day conference event and means I will be travelling to Brussels several times over the next couple of months.

My most recent trip saw me visiting the project offices where they explained what I was going to do. The next day I visited the European Parliament and saw where the conference is to take place. The internship and studies will prepare me for work in the future because they give me experience in the field that I may go into.

My studies have also given me skills in time management, report writing and showed me all aspects of the business world. My tutors are very supportive and will help me with any issues by giving me as much help as they can.



# Construction & the Built Environment

Course code: HNC 40079 Venue: Thurrock Duration: Two years (part-time) Cost: £3,000\*

## Why should I do this course?

Our Higher National Certificate (HNC) course allows you to study whilst employed to gain an industry-recognised qualification that is accepted around the world. The HNC can be your passport to advancing your career in the construction industry. Studying and working at the same time will require good organisational and time management skills but it allows you to use what you have learned immediately in your job. You can also bring real-life examples from your work into the learning environment to discuss with your peers.

The following organisations are amongst the relevant professional bodies who recognise the Higher Nationals in Construction and the Built Environment and their recommended unit structure as qualifications that contribute towards their requirements:

- Chartered Institute of Architectural Technologists (CIAT)
- Chartered Institute of Building (CIOB)
- Royal Institution of Chartered Surveyors (RICS)
- Engineering Council (UK) – Standards for Professional Engineering Competence

The qualification also meets the requirements of the Engineering Council (UK) – Standards for Professional Engineering Competence.

## What's covered?

The HNC Construction and the Built Environment has mandatory units in design principles and application, science and materials, group project in the construction industry and health, safety & welfare. Other units will include applied maths and management principles & application.

There is strong emphasis on analysis and evaluation of subject-specialist concepts and procedures. By the end of the programme you will have gained significant sector skills knowledge and competence to undertake middle to senior management responsibilities.

The course is primarily designed on the general pathway. Alternative pathways are subject to availability. To pass the course you must pass all eight units, including the four core units and four specialist units. These modules could relate to architectural technology, construction management, surveying or civil engineering. The University Centre offers units that will best benefit the students in line with the requirements of the construction industry.

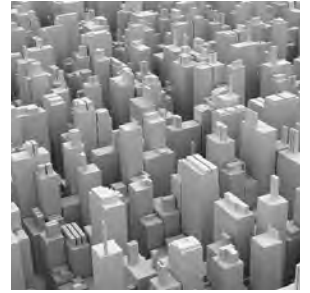
The academic year is split into two and key dates are contained in the HE year planner. Each year consists of four units, units are delivered alongside assessment coursework. You will also receive tutorial support and feedback meetings.

## How will my work be assessed?

The course is assessed through coursework. You will complete assignments that focus on the practical application of the assessment criteria, providing a realistic scenario for you to adopt, making maximum use of work-related practical experience and reflecting typical practice in the construction and built environment. The HNC is graded pass, merit or distinction.

Recognition of Prior Learning (RPL) is a method of assessment (leading to the award of credit) that considers whether you can demonstrate that you can meet the assessment requirements for a unit through knowledge, understanding or skills you already possess and so do not need to develop through a course of learning. This can be discussed at the start of the course.





### Entry requirements

- BTEC Level 3 Construction
- AVCE/GNVQ in a related vocational area (Level 3)
- an A-level with strong performance in relevant subjects
- a related Access to Higher Education Certificate or other related Level 3 qualifications
- related work experience supported by GCSEs at grades A\*-C or equivalent
- you will also need English and maths GCSE at grade C or above OR Level 2 equivalent (such as functional skills/learnirect)

📌 Mature students may present a more varied profile to be presented in a portfolio. This is likely to include extensive paid or unpaid work experience and/or achievement of a range of professional qualifications in their work sector.

### What can I do after this?

Following graduation from the HNC, you are eligible to progress onto a Higher National Diploma (HND) or on to a full degree programme.

### Alumni

#### Anthony Savage

The tutors at the University Centre are amazing and you got a sense they were not only passionate about the subject they were teaching, but also about you succeeding. It often gave me that extra boost to prove to them that they were right to think that I could do well.

I made some great friends from all walks of life and ages while being on the course. One of the great things about the programme was the fact that it gave you a great insight into the subject and you could follow on from it if you wanted, but if you didn't want to it didn't necessarily matter

as you still had a qualification. The fact that I was a mature student was also beneficial in my eyes. Sometimes, when you're younger, it's difficult to really know what you want to do in life and the opportunity's wasted. This way I found what I wanted to do and then followed it up with a qualification.



# General Engineering

**Course code:** HNC 35147 **Venue:** Thurrock **Duration:** Two years (part-time) **Cost:** £3,000\*

## Why should I do this course?

Our Higher National Certificate course offers a good balance of academic theory and practical industry knowledge which is firmly aligned to your job requirements from day one. Through high-quality lectures, case study research and employer-based projects you will gain a unique blend of general skills along with specific industry knowledge in the field of engineering.

The ability to study part-time alongside your job, allows you to gain an industry-recognised qualification that is accepted around the world. The HNC becomes your passport to advancing your career in engineering. Studying and working at the same time does require good organisational and time management skills, but it allows you to apply your learning immediately to your job as well as to bring in real-life examples from your work into the learning environment to discuss with peers.

Higher Nationals are designed to provide a specialist vocational programme, linked to professional body requirements and National Occupational Standards where appropriate. They offer a strong, sector-related emphasis on practical skills development alongside the development of requisite knowledge and understanding. The qualifications provide a thorough grounding in the key concepts and practical skills required in their sector and their national recognition by employers allows direct progression.

The development of this qualification has been informed by discussions/ relevant publications from the Engineering Council UK (EC (UK)) and the Science, Engineering and Manufacturing Technologies Alliance (SEMTA).

## What's covered?

The HNC General Engineering has mandatory units in:

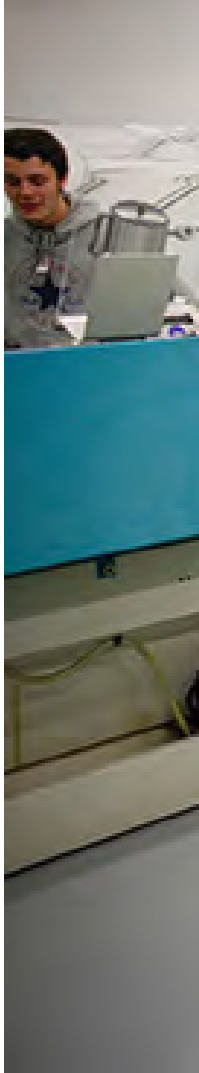
- analytical methods
- engineering science
- project design, implementation and evaluation

There is strong emphasis on analysis and evaluation of subject-specialist concepts and procedures.

## How will my work be assessed?

The course is assessed through coursework. You will complete assignments that focus on the practical application of the assessment criteria, providing a realistic scenario for you to adopt, making maximum use of work-related practical experience and reflecting typical practice in industry. The HNC is graded pass, merit or distinction.

Recognition of Prior Learning (RPL) is a method of assessment (leading to the award of credit) that considers whether you can demonstrate that you can meet the assessment requirements for a unit through knowledge, understanding or skills you already possess and so do not need to develop through a course of learning. This can be discussed at the start of the course.





## Entry requirements

The following are accepted:

- BTEC Level 3 Engineering
- AVCE/GNVQ in a related vocational area (Level 3)
- an A-level with strong performance in relevant subjects
- a related Access to Higher Education Certificate or other related Level 3 qualifications
- related work experience supported by GCSEs at grades A\*-C or equivalent
- you will also need English and maths GCSE at grade C or above OR Level 2 equivalent (such as functional skills/learnirect)

● Mature students may present a more varied profile to be presented in a portfolio. This is likely to include extensive paid or unpaid work experience and/or achievement of a range of professional qualifications in their work sector.

## What can I do after this?

Following graduation from the HNC, you are eligible to progress onto a Higher National Diploma (HND) or onto a full degree programme.





# Counselling

**Course code:** FdA B940, BA (Hons) B941 **Venue:** Southend

**Duration:** FdA Two years, BA (Hons) Three years (full-time) **Cost:** £7,000\*

Counselling

## Why should I do this course?

The FdA course, which offers the option to top-up to a full BA (Hons) offers you a strong theoretical and practical base from which to begin your professional counselling practice, while working towards individual accreditation with the BACP. The theoretical orientation is humanistic, with other approaches such as cognitive behavioural therapy and transactional analysis are also examined.

## What's covered?

The specific aims of both courses are to offer you a rigorous theoretical and practical training as a baseline for your professional counselling practice. Foundation degree graduates can seek employment directly as counsellors, or choose to progress to a full undergraduate honours degree.

### Areas of study:

#### Year one:

- person-centred and existential counselling: skills and theory
- ethics
- working with diversity
- working with young people
- fitness to practice

#### Year two:

- research
- process experiential counselling (CBT within the person-centred frame)
- transactional analysis
- cross-cultural counselling
- creative techniques
- feminist theory and practice

#### Year three:

- dissertation
- abused and abuser
- LGBT
- addictions
- loss and bereavement
- counselling philosophy

## How will my work be assessed?

The course is assessed through coursework. You will complete assignments that focus on the practical application of the assessment criteria, providing a realistic scenario for you to adopt, making maximum use of work-related practical experience.

Recognition of Prior Learning (RPL) is a method of assessment (leading to the award of credit) that considers whether you can demonstrate that you can meet the assessment requirements for a unit through knowledge, understanding or skills you already possess and so do not need to develop through a course of learning. This can be discussed at the start of the course.

## DBS (Disclosure and Barring Service)

As this programme may involve regular access to children and/or vulnerable adults, you are legally required to complete a DBS check for which you will pay an administration fee. Further details will be issued as part of the admissions process.





## Tutor

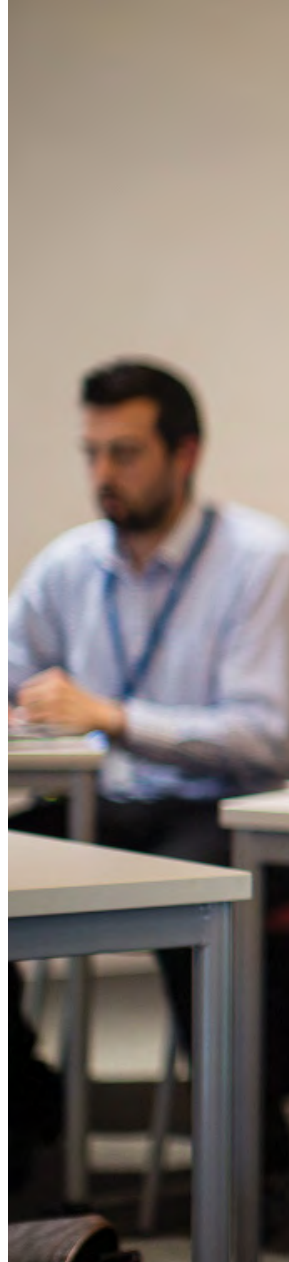
---

### **Maggie Parry**

Course Team Leader  
Counselling Degree and  
Therapist in Private Practice

Counselling is a unique course in that our students really look closely at themselves and relate at depth with their tutors and their peers. This can be challenging as well as rewarding and is balanced with a degree of fun and exuberance.

Our graduates will be able to work as fully qualified counsellors working towards BACP accreditation, within an agency or in private practice as well as being able to diversify into most areas that relate to mental health and care.



## Entry requirements

---

Prior to interview you will have been asked to complete and return a written submission entitled "discuss your reasons for applying to train within the humanistic field of counselling with reference to your understanding of person centred and/or existential counselling and refer to the need for personal awareness as a counsellor" (1000 words). It is important that this has been returned by the deadline given and definitely prior to your interview date.

If you are successful following the interview and completion of the portfolio leading to an offer from UCAS, you will still be required to meet the following conditions:

- completion of an enhanced DBS check undertaken by the College for which there will be an administration charge of £50.00 payable by the applicant (this is in addition to any you may currently possess); the College will contact you directly to arrange this prior to enrolment
- evidence of the following: GCSE English & maths grade C or above (or equivalent Level 2 or 3 Literacy and Numeracy qualifications such as learndirect or functional skills)

## What can I do after this?

---

Following graduation from the course, you are eligible to progress onto further studies.



# Psychology & Sociology

**Course code:** CertHE 043L, DipHE 143L, BA (Hons) L340 **Venue:** Southend

**Duration:** CertHE One year, DipHE Two years, BSc (Hons) Three years (full-time) **Cost:** £7,000\*

Social Studies

## Why should I do this course?

The course covers a range of interrelated social science disciplines including psychology, sociology, cultural studies and research methods, and explores topics such as poverty, mental health, social psychology, crime and deviance, culture and difference, local and global cultures, cultural politics, health psychology and the sociology of health and illness.

Each of the social science disciplines are run concurrently throughout the three years and each carries equal weighting in the programme for individuals wishing to continue with this course beyond the first year.

As this course covers a broad range of subjects, you will have the opportunity to proceed into an unlimited number of careers in this area. This course is ideal for graduates who wish to progress onto careers in many areas such as social research, teaching the civil service, NHS trusts, charitable & voluntary organisations, the police, or marketing agencies.

## What's covered?

**Year one:** in this first year of the programme you will be introduced to the four main subject strands that make up psychology and sociology:

- sociology
- psychology
- cultural studies
- social research methods

As part of the first year you will develop various skills and experiences related to these strands, synthesising them with basic competencies, language and concepts. You will also be encouraged to take responsibility for your own learning and to assimilate and engage with the culture of higher education.

**Areas of study:** include the history, development and present state of sociology, psychology and cultural studies, as well as methods and analyses for social research.

**Year two:** you will develop the ability to apply basic competencies, language and concepts of the programme and address the subject areas in more depth. There will be an increased emphasis on independent research and the application of the analytical skills acquired in the previous year, together with the development of both qualitative and quantitative research methods.

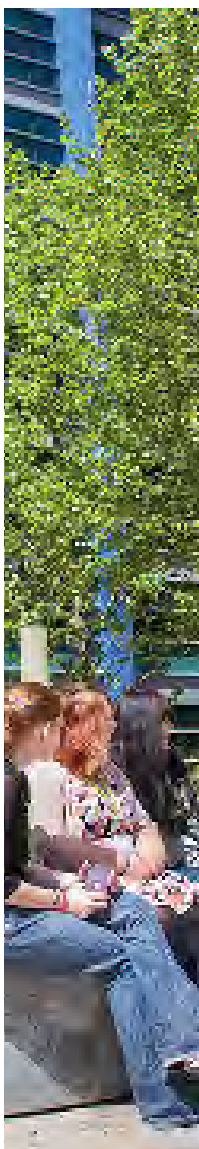
**Areas of study:** include social structures and structured inequalities, culture and difference, career development, social psychology and social research methods.

**Year three:** whilst studying a range of specialist modules across the two disciplinary strands, the main thrust of the final year is your dissertation, a substantial piece of independent writing.

**Areas of study:** include current issues in psychology and sociology, crime and deviance or the sociology of health and illness, cultural politics and local & global culture, alongside abnormal psychology and/or health psychology.

## How will my work be assessed?

Students are assessed through a variety of methods including essays, reports, research projects, reflective journals, seminars responding to pre-set reading, timed assessments and examinations. The first year of study is a qualifying year and does not count towards the final degree classification.





## Entry requirements

---

For BA (Hons) you will need 160 UCAS points from one or more of the following:

- at least two A-levels
- BTEC Level 3 Extended Diploma/Diploma/Subsidiary Diploma/Certificate [QCF]
- BTEC National Award/Certificate/Diploma [NQF]
- International Baccalaureate
- AQA Baccalaureate
- Progression Diploma
- Advanced Diploma
- you will also need English and maths GCSE at grade C or above OR Level 2 equivalent (such as functional skills/learnirect)

◆ Candidates without formal qualifications may apply and will need to demonstrate the ability to study at a higher level through interview, the submission of an exceptional entry portfolio and/or a written assessment.

## What can I do after this?

---

Our graduates have taken up careers ranging from a case-worker in a women's refuge, a manager for a housing charity, a family conferencing case-worker, a Connexions adviser, a disability rights consultant, a mental health worker, and a clinical psychologist. In addition, many graduates have taken up teaching careers in the primary, secondary and post-compulsory sectors, while others have gone on to further study at masters and PhD level.

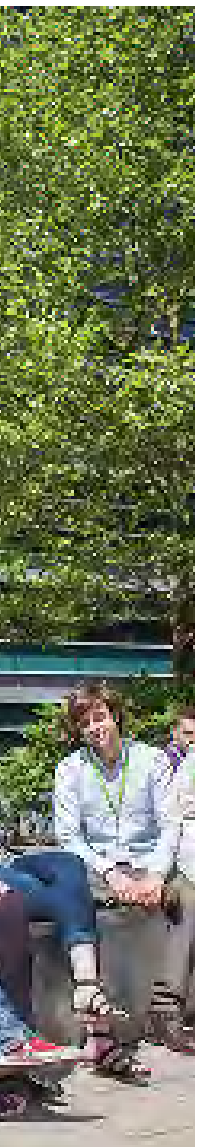
## Alumni

---

### Sibangani Mswelanto

While I was studying I worked voluntarily in home care recruitment. After finishing my studies I managed to get permanent work after just one week, working in recruitment for the health and caring professions.

My time at University Centre Southend was massively important to me. I was unsure of the language and not very confident. The tutors were supportive and understanding and by the time I left I was more than ready to go straight into a job. The staff were aware that I was from a different background and they were very patient. They were always there for me and I would recommend the University Centre to anyone.



# Hospitality Management

**Course code:** FdSc N865 **Venue:** Southend **Duration:** Two years (full-time) **Cost:** £7,000\*

## Why should I do this course?

This programme encompasses all aspects of working in the hospitality business including room operations, human resources, food service, gastronomy, revenue and finance management, event management and customer care. The course will also provide a basic knowledge of the business aspect of the industry. The programme has been structured to allow those working in the industry to study at a level that is appropriate to their developmental needs with stop-off points to support breaks in study.

The programme is designed to provide the skills required to work in managerial positions within the hospitality industry.

This course includes work placements, vocational projects and visits within specialist areas of hospitality. You will collaborate with other programmes within the department, which will allow you to develop your own business.

The degree encompasses a broad range of academic disciplines including business and employment law, marketing and human resource management.

## What's covered?

**Year one:** the first year offers you the opportunity to develop skills in the practical aspects of the hospitality industry. Intellectual and cognitive skills are fostered through seminars, tutorials and group discussion, encouraging creative thought and practice.

There will also be the opportunity to study for the CIEH Level 3 Certificate in Food Safety (there will be costs associated with this).

**Year two:** the second year will expand on the skills gained in the previous year and introduce new subjects such as human resource management, business and employment law, events management and work placement. The skills you learn will enable you to identify an area of study to develop for a personal-directed project.

Within the events management module you are given the option to study and take the industry-related qualifications of First Aid at Work, Food Safety up to Level 3 and BIIAB National Licensee Certificate and Health and Safety at Work (there will be costs associated with this). There will also be collaboration opportunities to support, develop and encourage industry practice.

**Year three:** an optional top-up to a full BA (Hons) is devoted to several major tasks: the production of a substantial piece of academic writing (the dissertation) and the planning and managing of a large scale project together with designing your own business. In this culminating period of the programme, you are expected to attain a maturity within your practice and demonstrate a firm understanding of your position within the discipline, this is also supported by a professional development module.

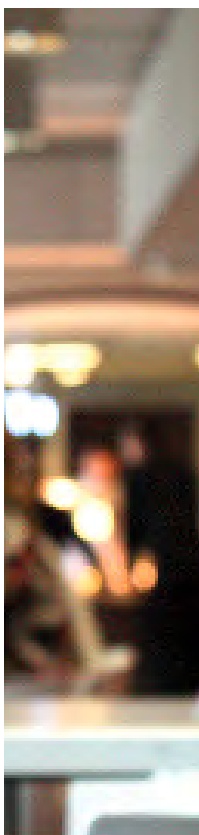
The final year degree project is designed to provide you with the opportunity to demonstrate your own qualities as a professional within the hospitality industry to the wider audience.

## How will my work be assessed?

Coursework is assessed in a range of different ways in order to accommodate a variety of learning styles and aptitudes, including portfolio submissions, group presentations, written essays, examinations and research folders.

**Teaching methods:** modules are delivered through a variety of methods of teaching and learning. These will include:

- technical demonstrations - within the practical environment to show skills and practices that are adopted and used within the hospitality industry
- small group teaching - workshop sessions led by the tutor
- group discussions - will usually occur throughout to encourage sharing of experience and knowledge
- individual tutorials - the tutor will ask key questions regarding your project and offer advice and suggestions regarding future development
- independent research - during the module students are expected to follow up on suggestions regarding project direction





## Entry requirements

For BA (Hons) you will need 160 UCAS points from one or more of the following:

- at least two A-levels
- BTEC Level 3 Extended Diploma/Diploma/Subsidiary Diploma/Certificate [QCF]
- BTEC National Award/Certificate/Diploma [NQF]
- International Baccalaureate
- AQA Baccalaureate
- Progression Diploma
- Advanced Diploma
- you will also need English and maths GCSE at grade C or above OR Level 2 equivalent (such as functional skills/learnirect)

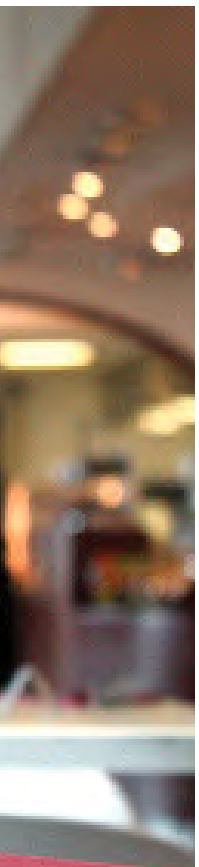
Other qualifications will be considered on an individual basis.

You will be required to demonstrate by interview and submission of a full portfolio, that you are suitable for the course.

- If you are a mature student and have worked independently for a significant period, we may be able to offer you a place on the programme purely on the strength of your portfolio interview and relevant experience.

## What can I do after this?

Having developed your intellectual curiosity and creativity, you will be equipped for diverse and exciting careers within the Hospitality industry.



# Computing & Systems Development

**Course code:** HNC 45094 **Venue:** Thurrock **Duration:** One year (full-time) **Cost:** £6,000\*

## Why should I do this course?

Our Higher National Certificate (HNC) enables you to gain an industry-recognised qualification that is accepted around the world. The HNC can be your passport to advancing your career in computing and systems development.

The Higher Nationals in Computing and Systems Development have been developed with career progression and recognition by professional bodies in mind. This HNC is recognised by the British Computer Society (BCS) and it provides a route to its membership.

## What's covered?

You will investigate how to design e-Commerce solutions to best serve modern industry, how computer systems work in theory by exploring hardware, software and peripheral components, look to future developments in technology and study the basics of networks. You will also work to improve your skills and increase your chances of progressing in your career.

### Areas of study:

- business skills for e-commerce
- computer systems
- employability and professional development
- emerging technologies
- CCNA1 Fundamentals of Networking (online)
- systems analysis & design
- web design
- design a small home office network
- network security
- CCNA2 routers and routing protocols

## How will my work be assessed?

The course is assessed through coursework. You will complete assignments that focus on the practical application of the assessment criteria, providing a realistic scenario for you to adopt, making maximum use of work-related practical experience and reflecting typical practice in computing and systems development.

Recognition of prior learning (RPL) is a method of assessment (leading to the award of credit) that considers whether you can demonstrate that you can meet the assessment requirements for a unit through knowledge, understanding or skills you already possess and so do not need to develop through a course of learning. This can be discussed at the start of the course.



## Entry requirements

40 UCAS points which could come from:

- one A-Level grade E
- Level 3 Subsidiary, Diploma, Extended Diploma (QCF)
- Level 3 National Award, Certificate, Diploma (NQF)
- Progression Diploma
- Level 3 Advanced Diploma
- Extended Project (minimum 40 UCAS points)

## What can I do after this?

Following graduation from the HNC, you are eligible to progress onto a HND or full honours degree programme.

## Alumni

### Marwa Khan

I was given a special award for an outstanding dissertation by a company called FSI who I later joined as a junior developer and progressed to applications developer. I gave birth to my first child during my second year at college, worked, had my second child and then set up my own company, Asian Design which promotes and sells fashion by Asian designers.

The University Centre was responsible for the development of my skills, and it is there that I built the foundations from which I went on to develop my career.

The University Centre offers lots of great facilities, it helped me develop professionally, intellectually and personally and opened up many new horizons for me.





# Computer Games Design

**Course code:** BSc (Hons) WG24 **Venue:** Southend **Duration:** Three years (full-time) **Cost:** £7,000\*

## Why should I do this course?

This course is aimed at gaining employment in the rapidly expanding creative industries. You will develop a wide skill set in technical and creative fields which will open opportunities for employment across the sector. Modules are informed by industry practices and aim to lead you to the setting up of your own games development business during your studies.

## What's covered?

**Year one:** you will be introduced to game design concepts used by professional games developers and learn the skills required to create games and assets used in the industry. You will develop an awareness of games production processes through practical work-oriented modules such as game programming, 3D modelling, digital image manipulation and concept art. Theoretical modules in contextual studies enable you to critically examine historical, contemporary and emerging computer games debates.

**Areas of study:** contextual studies, visual storytelling, 3D modelling and texturing, introduction to games programming.

**Year two:** you will build on the skills developed in the first year by producing a complete computer game. To achieve this you will study areas such as games engines, 3D level design and 3D animation. These modules will form the foundation of your game design and 3D modelling skills, enabling you to produce sophisticated and professional results.

You will also develop your skills in a variety of contexts for different audiences, using a number of industry standard tools related to games design and development practice. Specifically, the

game engines module will enable you to investigate a variety of game engines and systems used in the creation of an interactive game.

**Areas of study:** games animations, games level design, professional and technical practice, browser-based games.

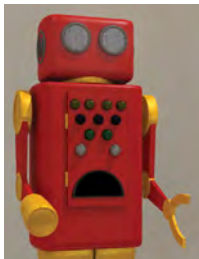
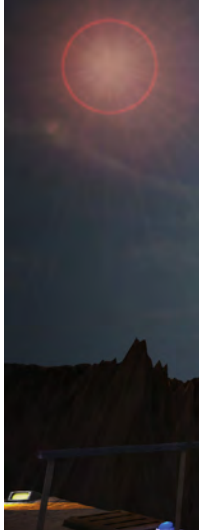
**Year three:** the final year of the course brings together all the elements of the previous two years to enable you to create a full length game adhering to all industry standards. This will involve high quality 3D models, textures and environments in addition to programming and scripting. Alongside this you will undertake a substantial academic investigation into an area of your choice, which will result in a dissertation.

The programme culminates in a final project designed to highlight your key strengths, with a particular focus on innovation, while encouraging creative development in areas of your choice. This will take the form of a portfolio which can be used to gain employment upon successful graduation.

**Areas of study:** final major project, business & production management, specialist skills development & presentation and dissertation.

## How will my work be assessed?

This course is 75% practically assessed, based on projects produced. The remaining 25% of the course is assessed through theoretical engagement such as essays and presentations.





2.

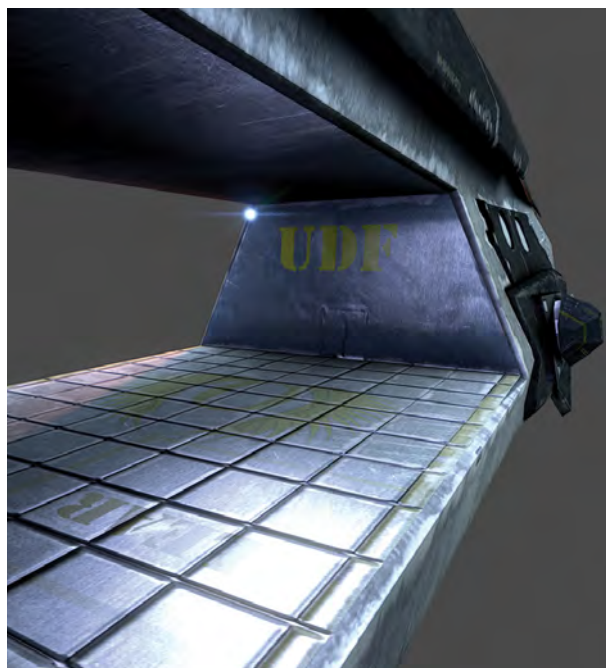


## Tutor

### Rama Maccha

The BSc (Hons) Computer Games Design is a high quality course taught by industry professionals who come from leading games studios with a passion for sharing knowledge of the technical and creative industries. The course is a combination of vital practical and technical skills which provide a firm foundation of understanding games design using a range of tools.

It's great to see students respond to challenging concepts and creative projects. Students continue to develop career building skills and confidence through the deployment of software platforms including Maya, 3D Max, Unity, Microsoft Visual Studio and Python supported by motion capture (human body and facials).



## Entry requirements

You will need a minimum of 160 UCAS points from one or more of the following:

- at least two A-levels
- BTEC Level 3 Extended Diploma/Diploma/Subsidiary Diploma/Certificate [QCF]
- BTEC National Award/Certificate/Diploma [NQF]
- International Baccalaureate
- AQA Baccalaureate
- Progression Diploma
- Advanced Diploma
- you will also need English and maths GCSE at grade C or above OR Level 2 equivalent (such as functional skills/learnirect)

## What can I do after this?

As a BSc (Hons) Computer Games Design graduate you can consider employment in the games development industry or in other creative industries such as TV, visual effects and broadcast industries. In addition to this you could pursue software development opportunities. You may also wish to continue your studies at masters level or undertake a teacher training course. We also offer a postgraduate support programme for computer games graduates which gives them continued access to facilities and tutors after they leave the College to help them hone their skills for employment.

# Digital Animation

Course code: BA (Hons) W615 Venue: Southend Duration: Three years (full-time) Cost: £7,000\*

## Why should I do this course?

The Digital Animation degree programme is designed to provide you with the skills, knowledge and experience required to become a successful designer. Our experienced lecturers who come from a wide range of disciplines will increase your technical ability, expand your understanding of an industry that includes animated film, special effects, children's animation, web design and games design. This degree offers a unique approach to digital animation within a broad media context that will effectively prepare you for successful progression to the career of your choice.

Graduates in this field have been successful in gaining professional experience as a first career step in the digital animation, creative media and related industries.

## What's covered?

**Year one:** your first year provides an interdisciplinary approach to digital animation, with a broad, practical and theoretical grounding in digital media production techniques. This means you will cover a broad range of media disciplines, giving you a clear understanding of how digital media industries such as film-based production, ideas generation through creative writing and media law through journalism work together with digital animation.

A number of modules will help you to develop an awareness of digital animation and its uses in the context of contemporary society as you acquire skills in communication, presentation, teamwork, problem-solving, leadership and project management.

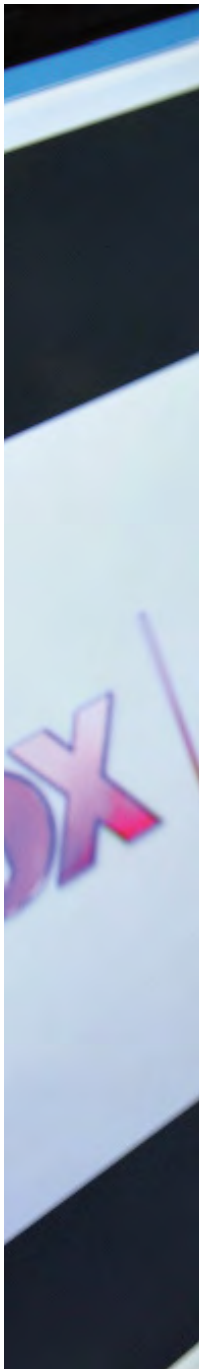
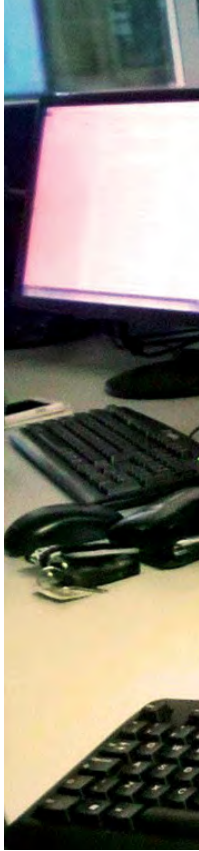
**Year two:** the second year concentrates on specialist modules to build upon the broad practical and theoretical knowledge gained in year one. The focus is on advanced technical skills acquisition within contemporary 2D and 3D mediums alongside working with external clients on live projects. Your skills will be expanded in a variety of contexts, for differing media and audiences in all genres of digital animation practice. Additionally you will be able to explore career development opportunities in digital animation and the creative industries.

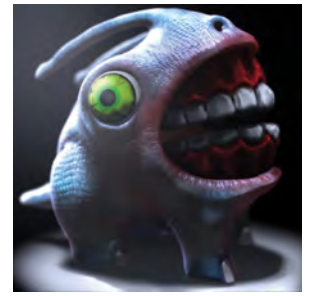
**Year three:** the third year of the programme will allow you to apply the skills and ideas you have developed in the previous two years to your own practice. The focus is on developing independent ventures, supporting a final major project and dissertation as the culmination of your practical and theoretical learning.

You will complete a substantial piece of animation work culminating in an exhibition to help you gain employment or further academic study opportunities. You will produce a professional digital animation portfolio that is to be supported by advanced research into critical theory and the work of contemporary practitioners. The professional practice module supports your transfer into employment or higher study.

## How will my work be assessed?

You will complete a range of individual and group projects including animation pieces, pre-production treatments, presentations and written essays.





## Entry requirements

---

You will need a minimum of 160 UCAS points from one or more of the following:

- at least two A-levels
- BTEC Level 3 Extended Diploma/Diploma/Subsidiary Diploma/Certificate [QCF]
- BTEC National Award/Certificate/Diploma [NQF]
- International Baccalaureate
- AQA Baccalaureate
- Progression Diploma
- Advanced Diploma
- you will also need English and maths GCSE at grade C or above OR Level 2 equivalent (such as functional skills/learnirect)

📌 Mature students who do not possess the entry requirements as listed above, but who possess related professional experience or non-standard qualifications are welcome. You will need to demonstrate, by interview, admissions test and/or portfolio submission, that you are suitable for the course.

## What can I do after this?

---

Find employment in film and TV production studios, advertising, publishing houses and web design firms. Graduates have also extended their education through postgraduate programmes at a number of established UK universities. Studio start-ups also occur among our graduates as a direct result of the positive collaborative atmosphere on the programme.

## Alumni

---

### Andrew Barber

While I was studying I did some intern work for companies like Newtown Films and work experience at Universal and Channel 4.

After leaving I did a few freelance jobs until I started working full-time at Fox International doing motion graphics. I mainly produce graphics for promotional material that goes on television and I have loved working on the launches of shows such as Falling Skies and The Walking Dead. Perhaps my best achievement is that I personally did all the branding for the National Geographic Wild channel.

My lecturers really pushed me to take on things that I didn't initially feel confident in doing and I learnt lots of things from every project that I worked on. The University Centre has a great feel about it and the teaching is really high quality.



# Journalism

**Course code:** BA (Hons) P500 **Venue:** Southend **Duration:** Three years (full-time) **Cost:** £7,000\*

## Why should I do this course?

This programme delivers a contemporary and unique approach to the study of journalism. The role of a journalist is rapidly changing and this degree is written to provide training in a variety of skills which ensures that our graduates are ready to face the challenges of the modern newsroom. This includes techniques of both the modern newsroom and online digital practice such as writing copy for long form and short form print, digital platforms, research, interview techniques and media law. These are combined with contemporary techniques such as filming and editing, producing multi-functional web pages, radio journalism, photojournalism and social media.

Teaching is in a lively, interactive format, whether it is a news writing session or discussion of a journalistic concept in seminars and practical workshops. The facilities include state-of-the-art digital computer labs, excellent learning resources and a comprehensive library. You'll also have access to industry-standard recording, filming and photography equipment.

The programme is validated by the University of Essex and provides a badge of recognition through multi-disciplinary training at the University Centre Southend media department.

## What's covered?

**Year one:** the first year provides an inter-disciplinary approach to journalism. This means you will cover a broad range of media disciplines, giving you a clear understanding of how digital media industries such as television broadcast, photojournalism and creative writing for media work together with journalism.

**Areas of study:** contextual studies, ideas factory, visual story-telling, production (TV/magazine).

**Year two:** the second year focuses in on specialist modules to build upon the broad practical and theoretical knowledge gained in year one. The focus is on skills based and professional practices, alongside working with external clients on live productions. Feature writing will be a major focus alongside more challenging production activities and opportunities for work placement. You will create your own website as a showcase for your identity as a creative media practitioner. You will be taught video journalism by experienced tutors using contemporary filming and recording equipment and predominately Mac platforms. Finally, you will prepare for your dissertation and study news coverage of foreign events.

**Areas of study:** connected journalism and media law, production journalism, digital publishing, reporting for radio.

**Year three:** you will devise your own creative project and complete your final year dissertation. Exploring investigative journalism, developing an investigative story and polishing a digital portfolio of your work will also contribute to your learning in the third year. Finally, you will be encouraged to specialise in specific aspects of journalism.

**Areas of study:** dissertation, final major project development, final major project, journalism in society.

## How will my work be assessed?

- writing portfolios
- completing briefs set by employers and commissioners
- developing web pages to deadlines
- ability to adapt writing style for a range of formats
- visual, audio and digital production
- presenting evaluations and proposals
- compiling research reports and portfolios
- your dissertation and independent research



## Entry requirements

---

A minimum of 160 UCAS points are required from one or more of the following qualifications:

- at least two A-levels
- BTEC Level 3 Extended Diploma/Diploma/Subsidiary Diploma/Certificate [QCF]
- BTEC National Award/Certificate/Diploma [NQF]
- International Baccalaureate
- AQA Baccalaureate
- Progression Diploma
- Advanced Diploma
- you will also need English GCSE at grade C or above OR Level 2 equivalent (such as functional skills/learnirect)

• We welcome mature students who do not possess the entry requirements but have related professional experience or non-standard qualifications. You will need to demonstrate your suitability by interview, admissions test and/or portfolio submission.

## What can I do after this?

---

Students have gained jobs in the local press, at Reuters, media press offices and in marketing and public relations agencies. Some have moved directly into freelance employment, or have pursued postgraduate programmes studies such as an MA or PGCE.



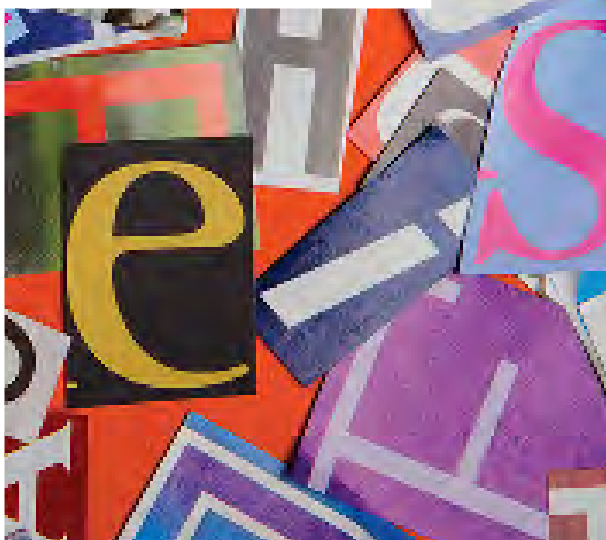
## Alumni

---

### Katy Taylor

After studying I went into banking and then became a freelance copy writer with my own website. I work for numerous different magazines and have my own blog.

While I was at the University Centre Southend I learned many skills that helped me. From interview and presentation skills, to general writing for lots of different genres. I learnt lots of skills that help in my current job. The University Centre is very professional and the equipment is fantastic. There are lots of options in terms of courses and you get the support that you need.



# Music Performance, Production & Composition

**Course code:** CertHE 013W, DipHE 113W, BA (Hons) W312 **Venue:** Southend

**Duration:** CertHE One year, DipHE Two years, BA (Hons) Three years (full-time) **Cost:** £7,000\*

## Why should I do this course?

In the music industry there is a growing need for multi-skilled practitioners who are able to write, create and perform music, as well as record and produce performances.

The course is concerned with the music production, performance and composition process in various different contexts (for example, sound for film and live performance) and is reinforced by a rigorous academic strand that ensures practical skills are backed up with a critical ear and an understanding of the theories that underpin them.

Our specialist studio facilities are resourced with two recording studios, four rehearsal rooms with instruments and equipment and a specialist music technology computer room. The course uses a variety of software including Avid Sibelius, Logic and Pro Tools and numerous other supporting pieces of software.

## What's covered?

**Year one:** provides the basic skills across the different programme areas to build a firm foundation in preparation for more specialist study in years two and three. A wide variety of subjects are covered, focusing on key practical skills and the basis of core academic inquiry in music. The practical topics include areas such as using a recording studio, musical performance and music sequencing, while the academic areas include music theory, cultural studies, and music law & ethics.

**Areas of study:** music theory and application, music law and ethics, music and culture, composition and arranging, studio management and production, sequencing practice and band musicianship.

**Year two:** the second year expands significantly on composition and performance whilst exploring critical lines of enquiry, introducing you to new ways of thinking and to artists outside of your area of experience. There is a significant focus in the second year on moving you forward in your study and encouraging you to work in a more independent and self-directed way.

**Areas of study:** dissertation preparation, business practice, creative industry practitioners, advanced ensemble studies, music and sound for TV and film, instrumental and group tuition, session musicianship, composition and theory.

**Year three:** the final year of study is the most challenging as it requires you to use the skills you learnt throughout the programme in an independent and self-directed way. In addition to the larger project-based units, the dissertation and practical project, both of which are double modules, there are some modules which deal with specialisation as well as supporting you to progress into the world of work.

**Areas of study:** dissertation, industry preparation, practical project, collaborative project, new music composition, supporting performance.

## How will my work be assessed?

The work is assessed via a range of practical activities, discussions and written assignments.





## Entry requirements

---

For BA (Hons) you will need 160 UCAS points from one or more of the following:

- at least two A-levels
- BTEC Level 3 Extended Diploma/Diploma/Subsidiary Diploma/Certificate [QCF]
- BTEC National Award/Certificate/Diploma [NQF]
- International Baccalaureate
- AQA Baccalaureate
- Progression Diploma
- Advanced Diploma
- you will also need English and maths GCSE at grade C or above OR Level 2 equivalent (such as functional skills/learnirect)

You will be required to submit an audition video of four to eight minutes in length.

You will be expected to have performance ability and an understanding of music theory.

## What can I do after this?

---

Our graduates pursue a variety of careers, many within related industries. Recent graduates have gone into teaching music, technical support for musicians, running music workshops, composing music for corporate media products. Some have gone on to study further, including masters level.



## Tutor

---

### Art Dickinson

This is by far the best vocational degree that I have ever come across. The course prepares students for successful careers in the industry because it's not just about performance and not just about production - it's an excellent balance of them both. Composition also has a prominent place in the curriculum and the course focuses on industry expectations and uses industry standard resources. All this ensures graduates come out with a range of skills tailored to their future career plans, and the open and friendly atmosphere helps to create great results!





# Music Production

**Course code:** CertHE 213W, DipHE 313W, BA (Hons) W310 **Venue:** Southend

**Duration:** CertHE One Year, DipHE Two years, BA (Hons) Three years (full-time) **Cost:** £7,000\*

## Why should I do this course?

From developing compositions to recording, editing, mixing, and mastering, music production covers the full range of production activities such as film, television, music and radio. Reinforced with a rigorous academic strand, this ensures the practical skills are complemented with a critical ear and an understanding of the theories which underpin music production.

The course is designed to work directly alongside the BA (Hons) Music Performance, Production and Composition programme. This is a significant advantage to students on both courses because it allows them to pool their knowledge and share their skills.

Studying Music Production will allow you to keep pace with the current up-to-date processes and standards within the industry.

## What's covered?

**Year one:** the first year of the programme will provide you with a practical and theoretical foundation in music production covering sequencing, recording, music theory and composition, which are skills you will build on through more specialist study in years two and three. You will also focus on key practical skills and the basis of core academic inquiry in music production.

**Areas of study:** composition and production arrangement, recording studio operation and studio management, sequencing systems, acoustics, cultural studies in music, music law and ethics, music theory and production analysis (contextual listening).

**Year two:** expands significantly on the technical areas, particularly in recording and post-production techniques as well as developing critical lines of inquiry, and introducing you to new ways of thinking and to creative practitioners outside your field of experience. There is a significant focus in the second year on moving you forward in your studies and encouraging you to work in a more independent and self-directed way.

**Areas of study:** practical subjects and skills, audio recording, live sound, post-production, sound and music for film and television, synthesis and sampling practice, academic/theoretical subjects and skills, business practice, creative industry practitioners, dissertation preparation.

**Year three:** the final year of the programme is the most challenging, requiring you to study independently, utilising the skills and knowledge gained in years one and two. In addition to the larger project-based modules, there are modules which deal with specialisation as well as personal development to support you in making the transition to employment. You will also take part in a collaborative production project using the time management and workflow skills you learnt as part of audio post production in year two.

**Areas of study:** practical subjects and skills, advanced location recording, collaborative production project, final year practical project, industry preparation, academic/theoretical subjects and skills, dissertation.

## How will my work be assessed?

The work is assessed via a range of practical activities, discussions and written assignments. Work is marked and internally verified and final grades are given as a percentage in line with standard degree classifications of 1st, upper and lower 2nd and 3rd. Work in the first year of the degree does not count towards the final degree award.





## Entry requirements

---

For BA (Hons) you will need 160 UCAS points from one or more of the following:

- at least two A-levels
- BTEC Level 3 Extended Diploma/Diploma/Subsidiary Diploma/Certificate [QCF]
- BTEC National Award/Certificate/Diploma [NQF]
- International Baccalaureate
- AQA Baccalaureate
- Progression Diploma
- Advanced Diploma
- you will also need English and maths GCSE at grade C or above OR Level 2 equivalent (such as functional skills/learnirect)

You may be required to attend an audition to determine your suitability to the course.

## What can I do after this?

---

Recent graduates have gone into music education, technical support for musicians, running music workshops, or composing music for corporate media products, whilst others have gone on to postgraduate study at masters level.

## Tutor

---

### Lol Drake

Our music production degree provides you with an opportunity to learn and develop new skills in a professional and supportive environment.

We prepare you for progression in to the industry through regular performance opportunities and collaboration with industry professionals such as the Royal Opera House as well as television, film and theatre companies.

Our strong links with the National Skills Academy enable us to deliver high quality education with industry-standard equipment at The Backstage Centre in Purfleet.



# Performance

**Course code:** HND H882 **Venue:** Southend **Duration:** Two years (part-time) **Cost:** £6,000 per academic year

Performance

## Why should I do this course?

This course embraces the scope and interdisciplinary nature of performance and will provide opportunities for you to locate and analyse performance as a human activity both practically and academically.

The domain of performance will naturally lead you to explore a wide range of topics and worlds. This will include style, space, character, vocal and movement techniques and cultural theory.

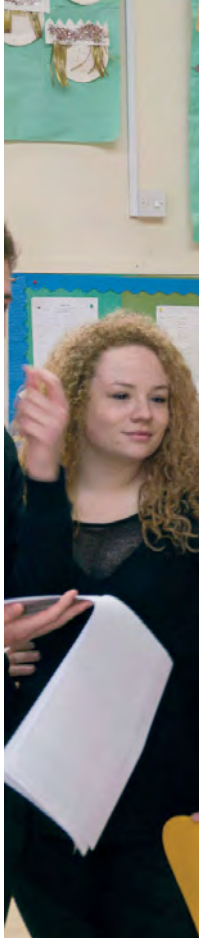
## What's covered?

**Year one:** research project, performance realisation 1 – devised performance, writing for performance, performance realisation 2 – innovations in performance.

**Year two:** professional practice, performance realisation 3 – contemporary performance, directing.

## How will my work be assessed?

You will be assessed via rehearsals, performance analysis, critical studies, technical application, and log books.





## Entry requirements

You will need a minimum of 160 UCAS points from one or more of the following:

- at least two A-levels
- BTEC Level 3 Extended Diploma/Diploma/Subsidiary Diploma/Certificate [QCF]
- BTEC National Award/Certificate/Diploma [NQF]
- International Baccalaureate
- AQA Baccalaureate
- Progression Diploma
- Advanced Diploma
- you will also need English and maths GCSE at grade C or above OR Level 2 equivalent (such as functional skills/learnirect)



All prospective students will be interviewed by the course team in which you also need to provide an example of some written academic work. In addition to the interview you must select, prepare and complete one of the tasks listed below that is dependent on your specialism:

- a performance piece
- a two-minute monologue
- a presentation

## What can I do after this?

Following graduation from the HND, you are eligible to progress onto further studies.



# Performance (Dance)

**Course code:** HND 4B22 **Venue:** Southend **Duration:** Two years (part-time) **Cost:** £6,000 per academic year

Performance (Dance)

## Why should I do this course?

This two-year programme is focused on helping you build the skills you need to become a versatile and creative dance professional.

The course provides opportunities for you to develop and stretch dance technique, and placing the art form within a wider cultural context.

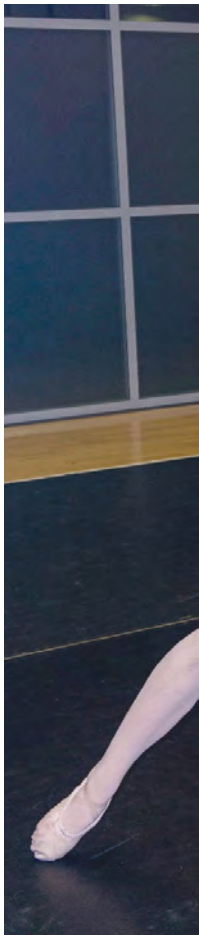
## What's covered?

**Year one:** choreography - solo, classical ballet, contemporary dance, jazz dance, tap dance, commercial dance, dance and health, research skills.

**Year two:** professional practice, classical ballet, contemporary dance, dance and education, jazz dance, tap dance, production arts, choreography - group.

## How will my work be assessed?

You will be assessed via rehearsals, research projects, technical application and journals.





## Entry requirements

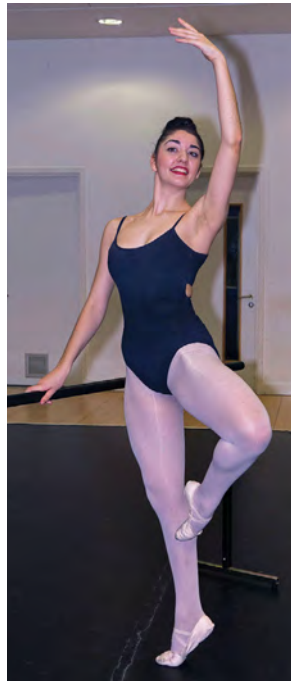
You will need a minimum of 160 UCAS points from one or more of the following:

- at least two A-levels
- BTEC Level 3 Extended Diploma/Diploma/Subsidiary Diploma/Certificate [QCF]
- BTEC National Award/Certificate/Diploma [NQF]
- International Baccalaureate
- AQA Baccalaureate
- Progression Diploma
- Advanced Diploma
- you will also need English and maths GCSE at grade C or above OR Level 2 equivalent (such as functional skills/learnirect)

You will be required to undertake dance workshops in classical ballet and jazz, followed by an interview with the course team where you will need to provide an example of some written academic work.

## What can I do after this?

Following graduation from the HND, you are eligible to progress onto further studies.



# Production for Live Performance and Events

**Course code:** CertHE W431 **Venue:** Southend **Duration:** One year (full-time) **Cost:** £7,000\*

## Why should I do this course?

This programme will equip you not only with the fundamental practical and technical skills required by all members of technical staff but also with a range of transferable problem-solving and analytical skills that will serve you well in a variety of careers. You will also have the opportunity to gain additional industry-standard qualifications to aid you in your future career.

The College has a close working relationship with the Royal Opera House's Bob and Tamar Manoukian Production Workshop in Purfleet and is one of the founder colleges of the National Skills Academy: Creative and Cultural. As such, there is huge potential for a unique involvement with these prestigious centres of excellence where training and production are internationally acclaimed and where technical and artistic inspirations are realised.

## What's covered?

**Year one:** provides a broad base of practical and theoretical knowledge in the key technical areas of production work and introduces you to the skills you will need to become a successful member of a production team. You will gain experience both at in-house productions as well as at local venues to further expand your knowledge. As part of the programme will focus on professional business practices that will help you to develop a professional work ethic and improve your chances of securing employment in the industry.

**Areas of study:** the production technician, production lighting, technical drawing, production sound, professional business practice, work placement.

## How will my work be assessed?

Through a range of assessment techniques.





### Entry requirements

---

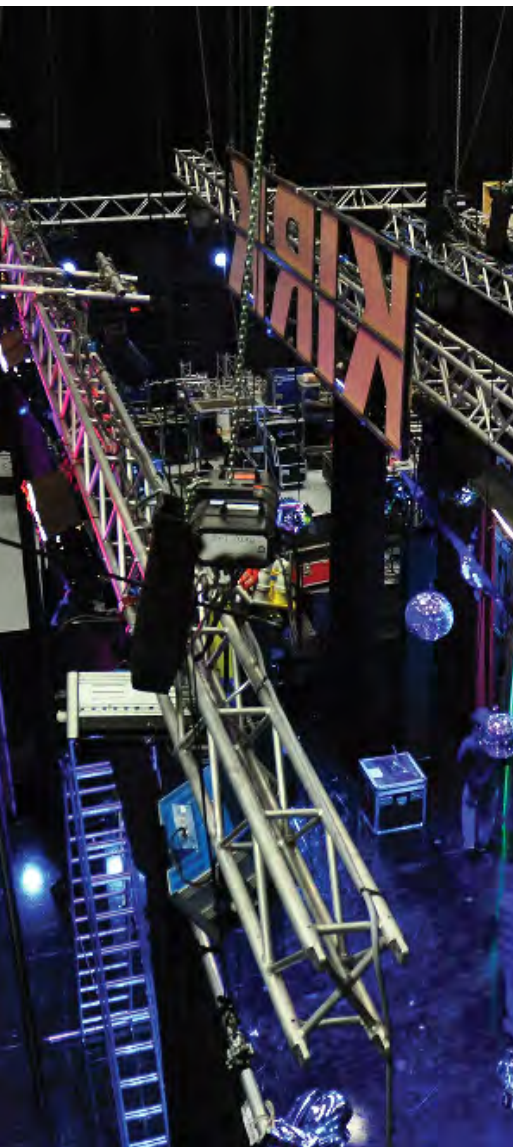
- 120 UCAS points or an appropriate Level 3 qualification
- GCSE English and maths at grade C or above, or equivalent (such as functional skills/learnirect at Level 2)
- relevant prior experience in production arts/technical theatre, either in an educational or vocational context

### What can I do after this?

---

Our graduates seek careers in backstage production, in areas ranging from lighting, sound and multimedia to stage management. As part of the course you are encouraged to develop links with local venues and employers to gain the professional networking contacts that will help you secure relevant employment after graduation.

This programme will equip you not only with the fundamental practical and technical skills required by all members of technical staff but also with a range of transferable problem-solving and analytical skills that will serve you well in a variety of careers.





# Television Production and Screen Media

**Course code:** BA (Hons) P320 **Venue:** Southend **Duration:** Three years (full-time) **Cost:** £7,000\*

## Why should I do this course?

This programme offers a unique approach to television and digital film production. It covers a range of media production techniques including cinematography, video editing, lighting and sound recording, in conjunction with opportunity to work in digital animation, creative writing and journalism. You will build skills which will be supported through critical and theoretical understanding of how the industry operates to increase your employability.

Graduates have had their films exhibited and, while they have been studying, some have gained professional experience as a first career step in media and related industries.

The course, validated by the University of Essex, is currently working towards Skillsset Media Academy status. We are recognised across industry as an excellent provider of media training and education. Along with our full HD Tricaster TV studio the media academy has a broad range of high quality facilities available to students who will be taught by lecturers who are industry practitioners. This includes the latest software from Apple and Adobe, taught by certified trainers, industry standard broadcast ready location cameras and 16mm film equipment.

## What's covered?

**Year one:** the first year provides an interdisciplinary approach to television production and screen media. This means you will cover a broad range of media disciplines, giving you a clear understanding of how digital media industries such as animation, creative writing and journalism work together with television production and screen media.

You will have the opportunity to work alongside undergraduates from the College's digital animation, journalism and computer games design degree programmes.

**Areas of study:** contextual studies, visual story-telling, production and ideas factory.

**Year two:** the second year focuses in on specialist modules to build upon the broad practical and theoretical knowledge gained in year one. The focus is on skills based and professional practices, alongside working with external clients on live productions.

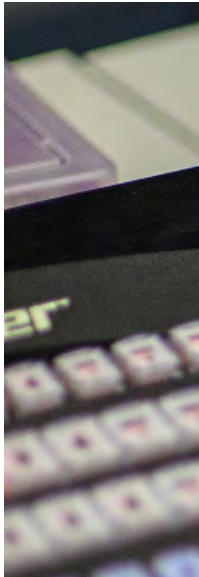
**Areas of study:** drama production, concept development, cinematography and cultural studies.

**Year three:** the third year focuses on developing independent ventures, supporting a final major project and dissertation as the culmination of your practical and theoretical learning. The finished product will be a polished show reel and portfolio of work to help you gain employment or further academic study opportunities.

**Areas of study:** dissertation, digital title sequencing, final major project development and final major project.

## How will my work be assessed?

The majority of assessments are based on practical project work, including short film projects and scripts. One module in each year of the programme is centred on written research and coursework, such as essays or a dissertation. Other module assessments require a portfolio of work that reflects the development of your ideas and production skills.





## Entry requirements

You will need a minimum of 160 UCAS points from one or more of the following:

- at least two A-levels
- BTEC Level 3 Extended Diploma/Diploma/Subsidiary Diploma/Certificate [QCF]
- BTEC National Award/Certificate/Diploma [NQF]
- International Baccalaureate
- AQA Baccalaureate
- Progression Diploma
- Advanced Diploma
- you will also need English and maths GCSE at grade C or above OR Level 2 equivalent (such as functional skills/learnirect)

📌 Mature students who do not possess the entry requirements but who possess related professional experience or non-standard qualifications, are welcome. You will need to demonstrate, by interview, admissions test and/or portfolio submission, that you are suitable for the course.

## What can I do after this?

You will be able to setup and run your own production company, and can work in both the British and international TV and film industry. Graduates currently pursue successful careers in companies such as the BBC, Channel 4, advertising agencies or regional film companies. Others continue their education at Master of Arts level and/or enter the teaching profession.

## Student

### Matthew Thomas

I study BA (Hons) Television Production and Screen Media and before I started my degree, I completed the Level 3 BTEC Creative Media production (TV and Film) course. While studying I created a showreel that landed me a job at Framestore, a British Oscar-winning visual effects company based near Oxford Street in London. I get to put my skills and knowledge I have learnt at University Centre Southend into use.

The equipment at the University Centre is a very high standard and keeps up with new technologies that help us when we leave the course.

I would recommend University Centre Southend to anyone who is looking to get their dream job as they will push you above and beyond.



# Applied Biology

**Course code:** HNC 25001 **Venue:** Southend **Duration:** Two years (part-time) **Cost:** £3,000\*

## Why should I do this course?

Our Higher National Certificate (HNC) allows you to study whilst employed to gain an industry-recognised qualification that is accepted around the world.

The HNC can be your passport to advancing your career in the scientific industry. Studying and working at the same time will require good organisational and time management skills but it allows you to use what you have learned immediately in your job. You can also bring real life examples from your work into the learning environment to discuss with your peers.

The Higher Nationals in Applied Biology have been developed with career progression and professional body recognition in mind. The qualification has secured recognition from the Society of Biology so that successful students can apply for associate membership. This is the first step towards becoming a full member (MSB) of the Society of Biology and applying for chartered status.

Successful students who have relevant work experience in biological science, or its application of at least two years, can apply to use the post-nominal letters AMSB. You can then apply for full member (MSB) status after a further three years.

## What's covered?

**Year one:** you will study the components and workings of the cell, how cells interact and how cells can be effectively cultured. You will investigate the formation of macromolecules within cells through specific biochemical pathways. The relationship between the structure of specialised cells and their functioning within tissues will be investigated. This theory will be tied together with laboratory based sessions in which you will cover a range of techniques becoming familiar with microscopy, titrimetric, spectroscopic and chromatographic techniques, serial dilution and aseptic techniques.

**Areas of study:** cell biology, biochemistry of macromolecules and metabolic pathways, physiology of cellular systems in animals, laboratory techniques of applied biology.

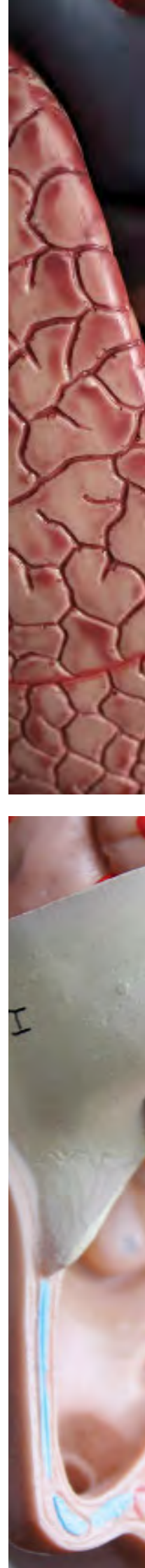
**Year two:** you will learn how to analyse data from scientific study using statistical and numerical methods. You will study the nervous and homeostatic control methods of the human body and investigate the transcription and translation of information from DNA to protein. You will relate how gene expression and patterns of inheritance affect populations. Finally information from previous units will be used to analyse how pharmacological principles can be applied and investigate the effect of drugs on nerve impulses and the immune system.

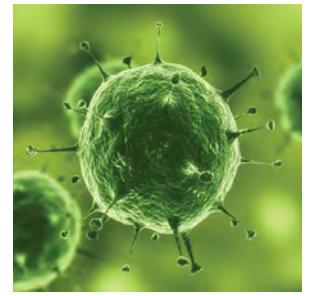
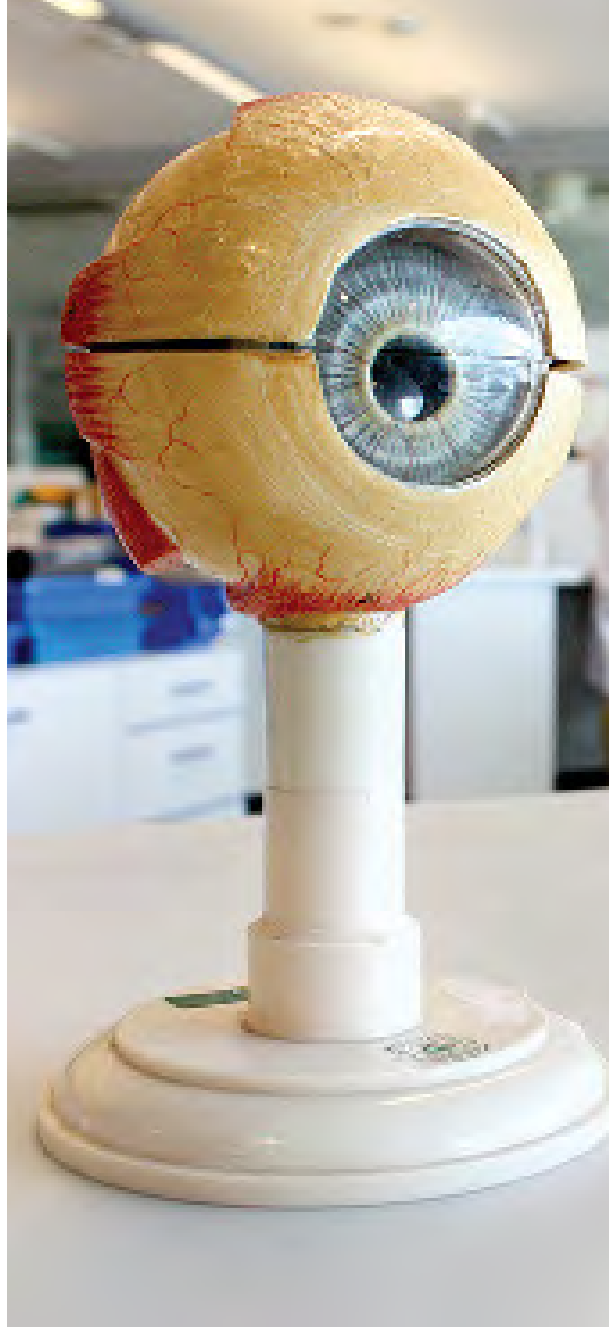
**Areas of study:** analysis of scientific data and information, neurophysiology and homeostatic control of the human body, molecular biology and genetics, pharmacological principles of drug actions.

## How will my work be assessed?

The course is assessed through coursework. You will complete assignments that focus on the practical application of the assessment criteria, providing a realistic scenario for you to adopt, making maximum use of work-related practical experience and reflecting typical practice in the industry.

Recognition of prior learning (RPL) is a method of assessment (leading to the award of credit) that considers whether you can demonstrate that you can meet the assessment requirements for a unit through knowledge, understanding or skills you already possess and so do not need to develop through a course of learning. This can be discussed at the start of the course.





## Entry requirements

---

40 UCAS points which could come from:

- an A-level grade E Level 3 Subsidiary, Diploma, Extended Diploma (QCF)
- Level 3 National Award, Certificates, Diploma (NQF)
- Progression Diploma Level 3 Advanced Diploma
- Extended Project (minimum 40 UCAS points)
- you will also need GCSE English and maths at grade C or above or equivalent

## What can I do after this?

---

Following graduation from the HNC, you are eligible to progress onto further studies.

## Tutor

---

### Tazeen Naim

Biology is the study of life which opens the door of exploration of our everyday existence. It takes us into the micro-environment of cells through the advances in molecular biology to understand how cells divide and differentiate, grow and function. This varied discipline includes health and nutrition, genetic inheritance, physiology of immune system, mechanism of diseases and drug action. The most promising aspect of biology is the emergent of new technologies, e.g. genetic engineering, recombinant DNA, human genome project, stem cell research, genomics and many more in the pipeline, to cure the fatal ailments and address the environmental, economic and social issues.



# Criminology & Forensic Investigation

Course code: BSc (Hons) LF64 Venue: Southend Duration: Three years (full-time) Cost: £7,000\*

## Why should I do this course?

Society needs to deal with crime more effectively, which requires an understanding of the underlying causes of criminal behaviour. This programme, which is aimed at those looking to progress to a career in criminology, forensic investigation or investigative policing, will enable you to understand the core causes of criminal behaviour and the principles of crime scene investigation, giving you the knowledge and skills you need to succeed in the industry. The course is supported by a comprehensive schedule of guest lecturers and educational visits.

As a student on this programme you will have access to extensive study resources including our automotive workshop for mock crime scenes, computer rooms for digital forensics, mock court scenarios for you to learn how to give evidence and specialist software programmes for photography and computer examination.

## What's covered?

**Year one:** in the first year you will gain the foundation of underpinning knowledge in each of the disciplines in criminology and forensic investigation and will also be introduced via presentational modules to the relevant concepts, theories and methods of working relevant to these industries. These skills will form the foundation of what you will need to succeed in this challenging programme.

**Areas of study:** introduction to criminology, crime scene investigation, introduction to biology and introduction to policing forensics.

**Year two:** building upon the foundation laid down in the previous year, you will look at the subject area in greater depth and learn how to apply and evaluate the underlying theories. You will play a more active, hands-on role via formal presentations, seminars and through interaction with your peers and you will have the opportunity to put into practice some of the theories and concepts you have been introduced to.

**Areas of study:** criminological research methods, the criminal justice system, heroes and villains, prisons, probation and offender rehabilitation, advanced crime scene analysis, anatomy, physiology and post-mortem processes, principles of criminal investigation, digital forensics, IT law and cybercrime & society.

**Year three:** in the final year you will be in a position to concentrate on your own personal development. You will undertake a final year project which you will manage from start to finish as well as writing a dissertation that will also include an original research project.

**Areas of study:** penology and penal policy, gender, crime and criminal justice, hate crimes and genocide, investigative psychology, cybercrime and society, forensic entomology & anthropology, forensic archaeology, principles of fraud examination, personal development and dissertation.

## How will my work be assessed?

Assessment methods have been designed to build on the skills and knowledge developed within the modules each year. The practical nature of the assessment methods will equip students with pro-active and re-active skills and thought processes, which it is anticipated will render graduates of this degree programme eminently employable. Such methods include networking portfolios, court attendance reports, role play, cross examination and multiple choice questions.



## Entry requirements

You will need a minimum of 160 UCAS points from one or more of the following:

- at least two A-levels
- BTEC Level 3 Extended Diploma/Diploma/Subsidiary Diploma/Certificate [QCF]
- BTEC National Award/Certificate/Diploma [NQF]
- International Baccalaureate
- AQA Baccalaureate
- Progression Diploma
- Advanced Diploma
- you will also need English and maths GCSE at grade C or above OR Level 2 equivalent (such as functional skills/learnirect)

You will need to obtain a CSI kit which can be purchased at an approximate cost of £80.

## What can I do after this?

Potential career routes include working in mainstream policing (possibly as a crime scene technician), the criminal justice system (in the probation or prison services) or in financial institutions that may be at risk from financial fraud. Graduates from this degree programme may also seek employment in related areas such as teaching after a period of further study.



## Alumni

### Rebecca Wells

I studied Level 3 Uniformed Public Services and completed the first year of BSc Criminology and Forensic Investigation. I received triple distinction triple \* in Level 3 Uniformed Public Services and Level 4 Criminology and Forensic Investigation.

I became a special police constable for Essex police whilst studying and then trained to become a full time police constable.

The University Centre taught me a lot about the police force and I feel that has given me a great advantage. The tutors explained how strictly the emergency services worked and the course allowed me to gain a lot of discipline that has prepared me for the police force. I use what I have learnt in my job.

I would recommend University Centre Southend because it is very dynamic and can meet anyone's needs. I had a great time and there is something for everyone.



# Sports Studies

Course code: BSc (Hons) C601 Venue: Southend Duration: Three years (full-time) Cost: £7,000\*

## Why should I do this course?

The sport industry is one of the fastest growing in the UK, influenced by the increasing awareness of the value of health and exercise, the success and popularity of British sports internationally and the focus on the legacy following the 2012 Olympic Games. Sport is a dynamic area full of opportunity and the demand for qualified, knowledgeable individuals in specialist areas such as coaching, performance enhancement and teaching is increasing. If you want to be a part of it, there has never been a better time to get involved.

The programme is designed to create a detailed understanding and evaluation of sports studies and its sub-disciplines: psychology, physiology, history and sociology, physical education, health and fitness, and sports development. Furthermore, this programme of study aims to provide you with both the theoretical and practical skills necessary to gain employment or enter postgraduate study within sport. In years two and three of the course you will be invited to focus on a programme of study by choosing either a teaching and coaching pathway or a health and fitness pathway.

## What's covered?

### Year one:

- exercise, health and nutrition
- research techniques in sport and exercise
- anatomy and physiology
- fundamentals of sports psychology
- sociology of sport
- planning fitness and training
- fundamentals of sports coaching

### Year two:

- advanced research techniques for sport and exercise sciences
- exercise physiology
- exercise psychology

### Teaching and coaching pathway:

- historical and sociological aspects of sport
- teaching and coaching methods
- sport and event management
- PE in the community

### Health and fitness pathway:

- fitness industry experience
- exercise for special populations
- advanced planning for fitness

### Year three:

- dissertation/ final year project
- sports nutrition
- legal aspects of sport and exercise

### Teaching and coaching pathway:

- applied sports psychology
- analysing sports performance
- sports development
- comparative studies in sport and society

### Health and fitness pathway:

- health assessment and exercise rehabilitation
- strength and conditioning
- advanced fitness industry experience

## How will my work be assessed?

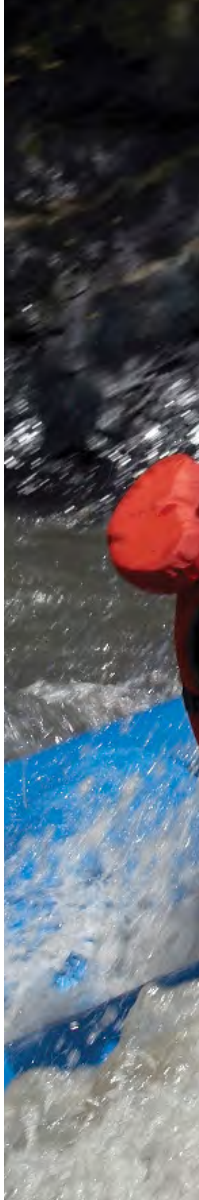
Throughout the degree course your assessments are extremely varied and involve a wide range of practical assessments within the modules such as coaching through the early years, teaching and coaching methods and health assessment and exercise prescription.

You will also be assessed through a variety of athlete case studies ranging from modules such as applied sports psychology, sports nutrition and sports law. Research assessments are an important part of the Sports Studies degree and the development and implementation of research ideas provides an alternative method of assessing the development of skills and knowledge.

Additional methods of assessment across the degree course include presentations, coursework essays and examinations.

## DBS (Disclosure and Barring Service)

As this programme may involve regular access to children and/ or vulnerable adults, you are legally required to complete a DBS check for which you will pay an administration fee. Further details will be issued as part of the admissions process.





## Alumni

### Ben Cirne

My original ambition was to leave College and become a teacher specialising in physical education. I am now head of performance analysis at Southend United football club.

Doing the degree has massively helped me with my career. Without it I wouldn't be in the position I'm in now. The work placement I did at SUFC was advertised at the University Centre. The tutors put me on to it and really helped me through it (especially the last year when it was tough to balance studying and my job).

Doing a degree in Sports Studies doesn't just narrow you to football as it is an overall sports degree so you can go for any job or sport that interests you. I would definitely recommend doing this degree if you want to make sport your career.



## Entry requirements

- 200 UCAS points
- GCSE maths and English at grade C or above (or equivalent)

Relevant industry experience is also considered and a mature entry portfolio is available for recruiting from the industry.

## What can I do after this?

On completion of the degree, you could progress into a variety of different career paths ranging from teacher training via a number of Graduate Teacher Training Programmes, Postgraduate Certificates in Education or teaching assistant places and careers in sports coaching.

In addition a number of career opportunities in the health and fitness industry are available from strength and conditioning coaching to exercise referral. Some graduates also progress into sports development posts. There are also a number of postgraduate courses such as sports psychology and sports nutrition that offer further progression in the sport field.





# Certificate in Education

(Learning and Skills Sector)

**Course code:** Cert Ed 5616 **Venue:** Southend **Duration:** Two years (part-time) **Cost:** £2,250\*

## Why should I do this course?

This course is offered on a part-time basis with full tutorial support. Trainees will be taught by module tutors and are assigned a personal tutor. Members of the teaching staff are highly experienced in education studies and related disciplines. The qualification is awarded through the University of Essex.

**⚠ Please note that this course is not suitable for anyone wishing to teach in the primary or secondary education sectors.**

## What's covered?

Two modules per semester (four modules per year, eight modules across the two year programme), Timetables will be advised prior to enrolment.

- principles and practice of planning
- delivering and assessing for learning
- theories of learning
- behaviour management
- inclusive practice
- equality and diversity
- curriculum studies
- quality procedures
- professional studies
- action research project
- continuing professional development

A variety of teaching strategies are used, such as group interaction, paired and individual work, one-to-one seminars, guest speakers, support from subject specialist mentors and regular tutorial input. A range of interactive technologies are taught and is available for use by students.

## How will my work be assessed?

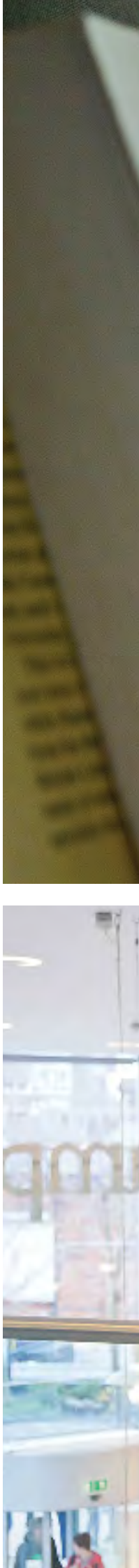
Assessment dates fall in both semesters. Trainees complete a variety of assignments including portfolios of teaching practice, presentations, viva, case studies, brochures, seminars, research reports and blogs. Trainees need to complete a minimum of 100 teaching hours (50 each year) and will be observed eight times in total.

## Entry requirements

- Level 3 subject specialism
- GCSE English and maths at grade C or above, or equivalent (numeracy or literacy at Level 2 such as functional skills or learndirect). Evidence of this will be required during the application cycle. We will consider applicants holding overseas qualifications that are equivalent to those described above. For an assessment of overseas qualifications contact National Academic Recognition Information Centre for the United Kingdom (NARIC). If NARIC deem your English language qualification not to be equivalent to a GCSE grade C or above, you must hold an IELTS qualification with a minimum score of 7 in each element

**⚠ NB: Applicants must hold these qualifications before applying for the course.**

- satisfactory initial assessment in literacy. This will be conducted on the day of the interview and consists of a one hour online diagnostic test. Applicants must achieve a score of 65% to be offered the PGCE/Cert Ed programme, a score below this may be offered DTLLS. Reasonable adjustments can be made where appropriate
- satisfactory interview





## Entry Requirements (cont.)

- must be working in a paid educational position
- must be delivering a minimum of 50 hours of teaching in each year of study. Evidence of this will be required during the application prior to entry
- have provision of a mentor in the workplace who is a qualified teacher/lecturer (i.e PGCE, Cert Ed or DTLLS) and where possible is a subject specialist in the same area as the trainee teacher. Evidence of this named person will be required during the application cycle prior to entry
- where the mentor is not a subject specialist the trainee teacher will require the support of a named subject coach
- to work in the lifelong learning sector a current Disclosure & Barring Service (DBS) enhanced check is required

## What can I do after this?

This course is a nationally recognised teaching qualification in the lifelong learning sector. Graduates can therefore apply for QTLS.



# Early Years Education

**Course code:** BA (Hons) X310 **Venue:** Southend and Thurrock\*\* **Duration:** Three years (full-time) **Cost:** £7,000\*

## Why should I do this course?

Increasingly, research shows the importance of children's earliest educational experiences, and the government's National Childcare Strategy has highlighted that the early years are critical to children's development. High quality experiences with trained and committed staff will prepare children most effectively for later learning.

Knowledge about the importance of early childhood experiences is built on a solid foundation of theory. Research and modern neuroscience show that at an age when children's brains are developing rapidly there is the greatest opportunity for early years professionals to help shape their development.

By choosing to study for the BA (Hons) Early Years Education, you will enhance your critical thinking skills, learn to become a reflective practitioner and discover the skills needed to facilitate children's development.

Skilled early years professionals can help transform children's lives, a fact recognised by the government which is committed to widening early years provision and making it an all-graduate profession. This means that it is currently one of the most exciting fields in which to learn and work.

## What's covered?

**Year one:** you will gain a foundation of underpinning knowledge to help you develop the skills necessary for the more specialist subjects studied during years two and three. You will study the biological and sociocultural factors which influence children's learning and cognitive development as well as policy and legislation issues. Finally, you will gain an understanding of social issues relating to family diversity, poverty and ethnicity as well as gaining European and British perspectives on education.

**Areas of study:** developing the effective learner, learning in the early years, policy, provision and legislation, social science as applied to early years, interpersonal and communication skills, introduction to research, curriculum studies.

**Year two:** in this year you will deepen and expand your knowledge to cover: the history of early years provision in the UK and other European member states, relationships, services in the voluntary, private & public sectors, and pedagogy, which will build on your understanding of child development. You will also be introduced to early years development in maths and as well as personal and professional development.

**Areas of study:** researching early years settings, professional studies and graduate skills advanced research, pedagogy, curriculum mathematics, curriculum language, curriculum science.

**Year three:** you will develop your research skills further and be more independent. This will prepare you for your dissertation, an independent research project. Topics you will study in this year include advanced research aims, which will enable you to develop the skills necessary to produce your dissertation and critically examine research methods. Other areas of study encompass professional and ethical issues such as overcoming barriers to learning, techniques of managing people in work settings and the key issues involved in the care and education of young children.

**Areas of study:** career development in professional practice, special educational needs, foundation studies, dissertation, management and organisational studies, psychological perspectives on children's behaviour.

## How will my work be assessed?

A variety of assessment methods are used over the three years. These range from essays to oral and poster presentations, and include portfolios, lesson planning and research projects.

## DBS (Disclosure and Barring Service)

As this programme may involve regular access to children and/or vulnerable adults, you are legally required to complete a DBS check for which you will pay an administration fee. Further details will be issued as part of the admissions process.

\*\* Thurrock delivery subject to validation.

\*per academic year for home and EU students.

This course is validated by the University of Essex





## Entry requirements

You will need a minimum of 160 UCAS points from one or more of the following:

- at least two A-levels
- BTEC Level 3 Extended Diploma/Diploma/Subsidiary Diploma/Certificate [QCF]
- BTEC National Award/Certificate/Diploma [NQF]
- International Baccalaureate
- AQA Baccalaureate
- Progression Diploma
- Advanced Diploma
- you will also need English and maths GCSE at grade C or above OR Level 2 equivalent (such as functional skills/learnirect)

You will need to obtain a work placement position in order to complete the modules successfully. The number of hours will be confirmed at the beginning of the academic year.

## What can I do after this?

The majority of the students on this course progress on to teacher training via one of these routes:

- Primary Postgraduate Certificate in Education (Primary PGCE)
- School-based Initial Teacher Training (SCITT)

Other students have obtained nursery management positions and some have progressed onto further study such as MA in Education or Social Work.

## Alumni

### Sam Lovell

I chose to study at University Centre Southend because I was impressed with the fantastic facilities and I could get a degree on my doorstep. I've already managed to meet a wide range of people on my course which is a real benefit because we all share our ideas and learn from one another. The course is mainly made up of female students, but I do not feel uneasy about it, it's about how you achieve, not whether you're a man or a woman. The tutors are amazing and really push you to achieve your very best. I would recommend the course to anyone.



# Professional Graduate Certificate in Education

(Learning and Skills Sector)

Course code: PGCE 5617 Venue: Southend Duration: One year (ft) Two years (pt) Cost: part-time £2,250\* full-time £7,000

## Why should I do this course?

This course is offered full-time and part-time with full tutorial support. Trainees will be taught by module tutors and are assigned a personal tutor. Members of the teaching staff are highly experienced in education studies and related disciplines. The qualification is awarded through the University of Essex.

❗ **Please note that this course is not suitable for anyone wishing to teach in the primary or secondary education sectors.**

## What's covered?

- principles and practice of planning
- delivering and assessing for learning
- theories of learning
- behaviour management
- inclusive practice
- equality and diversity
- curriculum studies
- quality procedures
- professional studies
- action research project
- continuing professional development

A variety of teaching strategies are used, such as group interaction, paired and individual work, one-to-one seminars, guest speakers, support from subject specialist mentors and regular tutorial input. A range of interactive technologies is taught and is available for use by students.

## How will my work be assessed?

Assessment dates fall in both semesters one and two. Students complete a variety of assignments including portfolios of teaching practice, presentations, viva, case studies, brochures, seminars, research reports and blogs. Students need to complete a minimum of 100 hours teaching and will be observed eight times in total.

## Entry Requirements

- an honours degree or equivalent. We use the UK National Academic Recognition Information Centre (NARIC) guidelines to make international comparisons
- GCSE maths and English grade C or above, or equivalent (numeracy or literacy at Level 2, such as functional skills, learndirect etc.
- We will consider applicants who hold the equivalent of the above qualifications. (For assessment contact NARIC). If NARIC deem your English language qualification not be the equivalent of a GCSE grade C or above, you must hold an IELTS qualification with a minimum score of 7 in each element.

❗ **NB: Applicants must hold these qualifications before applying for the course.**

- satisfactory initial assessment in literacy. This will be conducted on the day of the interview and consist of a one hour online diagnostic test. Applicants must achieve a score of 65% to be offered the PGCE/Cert Ed programme, scores below this level may be offered DTLLS
- satisfactory interview have provision of a mentor in the workplace who is a qualified teacher/lecturer



### Entry Requirements (cont.)

---

- where the mentor is not a subject specialist the trainee teacher will require the support of a named subject coach
- to work in the Lifelong Learning Sector you will need a current Disclosure & Barring Service (DBS) enhanced check is required

### Plus for the part-time course

---

- must be working in a paid educational position
- must be delivering a minimum of 50 hours of teaching in each year of study

### Plus for the full-time course

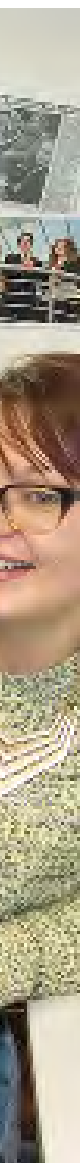
---

- suitable placement – where possible we will provide support to source
- must be delivering a minimum of 100 hours of teaching in your year of study

### What can I do after this?

---

This course is a nationally recognised teaching qualification in the lifelong learning sector. Graduates can therefore apply for QTLS.



# Special Education Studies

**Course code:** BA (Hons) X161 **Venue:** Southend **Duration:** Three years (full-time) **Cost:** £7,000\*

## Why should I do this course?

Special Education Studies is about ensuring that everyone, regardless of their needs, is given the opportunity to participate in learning experiences that are tailored and delivered in ways that address their needs, interests and ambitions. This programme is for those looking to progress to teaching, social work or management in the special education and social care sectors and will give you the skills and knowledge you need to create safe, stimulating and supportive learning environments.

You will benefit from being taught by a wide variety of staff. They range from experts in special education to those from wider disciplines such as early years education and social work. This unique multidisciplinary nature widens the exposure you will have to a range of career options and also grants opportunities for you to collaborate with students from other degrees on joint workshops, projects and scholarly visits.

A very special aspect of this programme is the opportunity to undertake work placements throughout the programme. This balance between theory developed at the College and practice in the workplace ensures that by the time you graduate, you will be ready and confident to progress to relevant employment.

## What's covered?

**Year one:** includes modules on theoretical perspectives such as legislation and policy frameworks for specific needs, human growth and development, applying the social sciences to specific needs, introduction to specific needs and introduction to research as well as some work-based modules such as communication and interpersonal skills and effective working practices and a skill-based module developing the effective learner.

**Year two:** enables you to further develop your skills in research methods, specific needs, identification & supporting specific needs, developing & delivering learning support programmes and a case study.

**Year three:** includes modules on advocacy & empowerment and multidisciplinary working in contexts, protection and vulnerability (safeguarding), principles of learning and assessment, practice and innovation in supporting specific needs and to build a continuing personal and professional development portfolio based on the culmination of evidence collected over the degree and work placement. You will also have the opportunity to conduct an in-depth individual research study into an area relevant to the main curriculum of the course.

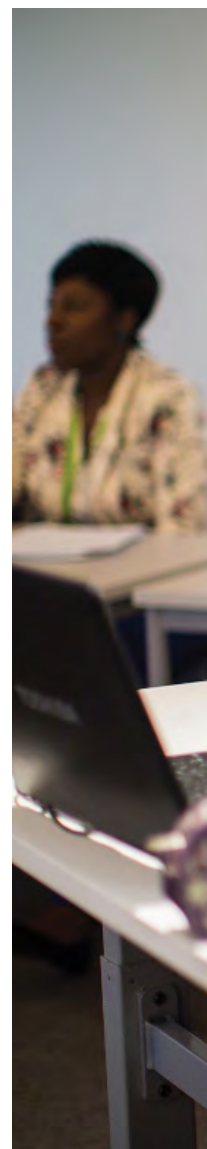
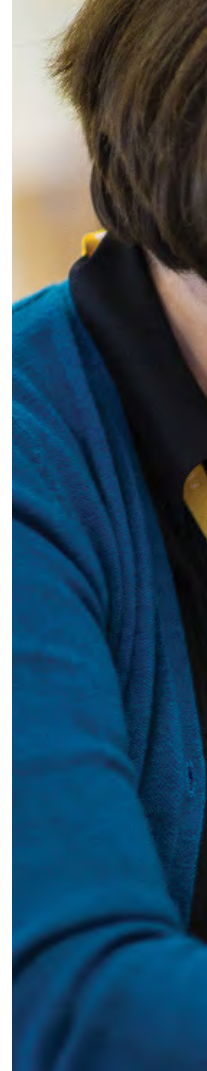
## How will my work be assessed?

A wide variety of teaching methods are used, including lively seminars, group discussion of issues arising from work placements, tutor-led lectures, presentations, simulated case conferences, assignment-based activity, practical exercises, role-plays, reflective work, supervision and tutorials.

The programme is assessed by coursework. Assessment comprises portfolios, action plans, case studies, reports, essay, seminar papers, reflective reports, project proposals, workplace observations and a dissertation.

## DBS (Disclosure and Barring Service)

As this programme may involve regular access to children and/or vulnerable adults, you are legally required to complete a DBS check for which you will pay an administration fee. Further details will be issued as part of the admissions process.





## Entry requirements

---

You will need a minimum of 160 UCAS points from one or more of the following:

- at least two A-levels
- BTEC Level 3 Extended Diploma/Diploma/Subsidiary Diploma/Certificate [QCF]
- BTEC National Award/Certificate/Diploma [NQF]
- International Baccalaureate
- AQA Baccalaureate
- Progression Diploma
- Advanced Diploma
- you will also need English and maths GCSE at grade C or above OR Level 2 equivalent (such as functional skills/learnirect)
- DBS (Disclosure and Barring Service)

## What can I do after this?

---

Possible career routes include teaching in mainstream education (possibly as a special education needs coordinator), teaching in schools designated for children with mild and severe learning disabilities, or managing special units, community care centres or training centres. This degree also prepares you for employment in a wide range of other social care or educational settings. Students wishing to pursue further study may continue at postgraduate level or continue in vocational training at another institution. Others have gone on to further study at masters and PhD level.





# Higher Education

## Read more at

[www.southessex.ac.uk/higher-education](http://www.southessex.ac.uk/higher-education)

Undertaking a higher education course is an investment in your future

## Why go into Higher Education?

The most common questions asked are: "What is higher education?" and "Why should I encourage my child to go into higher education?"

Higher education refers to studying for qualifications such as bachelor's degrees, higher national diplomas or foundation degrees. Students can enter via many routes, such as A-levels or through on-the-job training such as apprenticeships. For mature students previous experience can often be taken into account when applying for higher education courses. Higher education can enable you or your child to take education to the next level and fulfil potential.

Studying at a higher level is challenging for all students. Employers look for the key skills that studying at degree level provides such as communication, teamwork, problem solving and using information technology.

## Career prospects

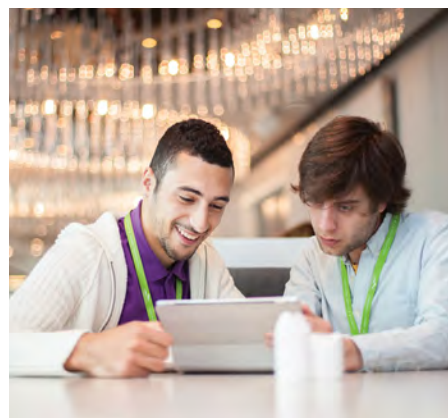
A higher education qualification is an advantage both in terms of career prospects and progression. Employers know that a higher education qualification confers a higher standard of learning, as well as a broad range of transferable skills and competencies. By gaining such valuable skills, you or your child will have access to a broader range of interesting and fulfilling careers.

## Earning potential

Undertaking a higher education course is an investment in your future. Graduates earn a higher starting salary than non-graduates and can expect their salary to rise at a faster rate. Ten years later, on average, degree-qualified men earn 30% more and women 46% more than non-graduates\*.

## Personal development

Student life is not all about studying, it's also about meeting new people, forming new friendships and making the most of the opportunities that higher education can provide. Studying will increase life experiences by learning new skills and developing new interests, helping you become a more confident and well-rounded adult.



\*Careers advisory service



# Why choose University Centre Southend and Thurrock?

## Read more at

---

[www.southessex.ac.uk/about](http://www.southessex.ac.uk/about)

## High quality qualifications

---

Our degree programmes are validated by the University of Essex, one of the UK's leading academic institutions with a top twenty ranking for research.

## Career-focused degrees

---

Our degree programmes are designed in partnership with employers to ensure you're fully prepared for employment.

## Quality outcomes for our students

---

The majority of our higher education students achieve a First or 2.1 in their degrees.

### **Jade Smith, 21, BA (Hons) Graphic Design**

"My tutors have always prepared for the time when I will leave and go out into the industry to work. With the guidance of my tutor I found a work placement at a design agency in Leigh-on-Sea called Charsley Stewart. I started going two days a week and I am still there now. Having been working at Charsley Stewart I have gained industry work for my portfolio. I have loved the opportunity I was given to work there and it has helped me a lot with my confidence and the quality of the work I have produced since."

## More time with your tutor

---

Our classes are small so you get more personal attention and a more personalised learning experience which maximises your opportunity to achieve great things.

## Flexibility and convenience

---

Some of our students come straight from sixth form while others have taken a break or spent time in work prior to starting their degree. This means you'll always find people at College just like you and a wealth of diverse and different people who will enrich your life.

## Technology and resources

---

Our campuses are full of industry-specific equipment, labs, studios and study areas. You will also benefit from the Forum Southend-on-Sea, a spectacular ultra-modern library and learning zone.





### Why choose us over a large university?

---

A substantial number of higher education courses are taught in colleges or university centres. There are many reasons why you might prefer us:

- smaller classes
- lower costs
- tutors with recent industry experience
- our transport links are excellent with all our campuses being very close to bus and railway stations that have direct links to London; at Southend the railway station is less than a minute away from our main reception and the expanding Southend airport with its international links is less than three miles away



## Read more at

[www.southessex.ac.uk](http://www.southessex.ac.uk)  
[/international](#)  
[/local-attractions](#)

## A great place to study

All of our campuses are close to London, a city that has everything. World-class cuisine, unrivalled entertainment such as clubs, theatres, cinemas, pubs, cafes, live music and comedy clubs not forgetting the many museums, galleries and exhibitions.

Essex has lots to offer with its rolling landscape, picturesque towns and villages, and boasts a number of stately homes such as Audley End House and Ingatestone Hall. With its country parks, nature reserves, award winning gardens and 350 miles of coastline, Essex has something for everyone.

The county has an international reputation for its entertainment. Every August, Hylands Park hosts the V Festival with line-ups that have included Eminem, Rihanna, Coldplay, and Beyonce. Blackshots Fields in Grays hosts The

Big Weekend every August and features a massive live stage that plays host to bands and DJs. Motorsport enthusiasts will love Arena Essex, which regularly hosts speedway,

banger and stock car racing events while football fans can watch clubs such as Southend United and Grays Athletic in action.

## All of our campuses are less than one hour from London



# The Forum Southend-on-Sea



## The Forum

Many of our higher education students will study in the Forum Southend-on-Sea.

The Forum is a £27 million ultra-modern library and learning zone, which is located opposite our Southend Campus.

The Forum Southend-on-Sea



£27 million  
ultra-modern  
library and  
learning zone



# Southend & Thurrock

## Discover more at

[www.visitessex.com](http://www.visitessex.com)

## Southend-on-Sea

With the growth of Southend as a university town, this historic and culturally-rich coastal resort offers an eclectic mix of on-trend entertainment, a varied and bohemian art scene and the traditional pleasures of a Victorian seaside venue.

## A convenient place to live

University Centre Southend is located in the heart of Southend High Street, with shops, restaurants and bars barely a stone's throw away. The transport links are excellent with a comprehensive bus network and two major London-bound train lines (including nine rail stations in the borough).

## Arts and festivals

There's a strong community of artists in the town with regular shows and exhibitions at galleries such as Tap and the Focal Point Gallery in The Forum Southend-on-Sea which feature visits from international artists.

Southend's theatres, the Cliffs Pavilion and the Palace Theatre, attract major West End touring productions, as well as concerts, ballet, opera and comedy.

There are also various festivals throughout the year including the Southend Film Festival (April), Village Green (July), Leigh Folk Festival (June), and the Thurrock Festival (July).



## Sport and leisure

---

Windsurfing, sailing and kite surfing are popular local pastimes, with speedboat racing and a sailing regatta also taking place every year. If hiking along the estuary appeals to you, you will enjoy picturesque Hadleigh Country Park and a range of coastal walks.

For mountain bike fans the track created for the 2012 Olympics offers a challenging off-road course for both cyclists and runners.

## Parks, gardens and history

---

Southend has a number of lavish parks, public gardens and woodland.

It is a town steeped in history with an 11th century castle, an ancient priory and churches mentioned in the Domesday Book as well as several local museums.

## Food and drink

---

With over 300 places to eat in the borough, from large chains and independent family-run restaurants to the College's own Waves restaurant, Southend offers a choice of global cuisine.



## Thurrock

---

Students at our University Centre Thurrock will discover that the area is rich in history and culture, with no shortage of stimulating activities from days spent visiting stately homes to heady weekends at music festivals.

The newly-built, £45million campus consists of two impressive three and four storey buildings which include cutting-edge training facilities and a unique outdoor amphitheatre

In nearby Purfleet, the College has teamed up with the Royal Opera House (ROH) to open a brand new workshop. This degree programme will train the next generation of costume makers for the ROH's world-famous productions.





# How to apply

## Read more at

[www.southessex.ac.uk/higher-education/applying](http://www.southessex.ac.uk/higher-education/applying)

## Full-time courses

Applications for full-time courses should be made through the Universities and Colleges Admissions Service (UCAS), quoting institution code S43 and the UCAS code for your chosen course. For information about how to do this, see the UCAS guide to filling in your application.

[www.ucas.com/ucas/undergraduate/apply-and-track/filling-your-application](http://www.ucas.com/ucas/undergraduate/apply-and-track/filling-your-application)

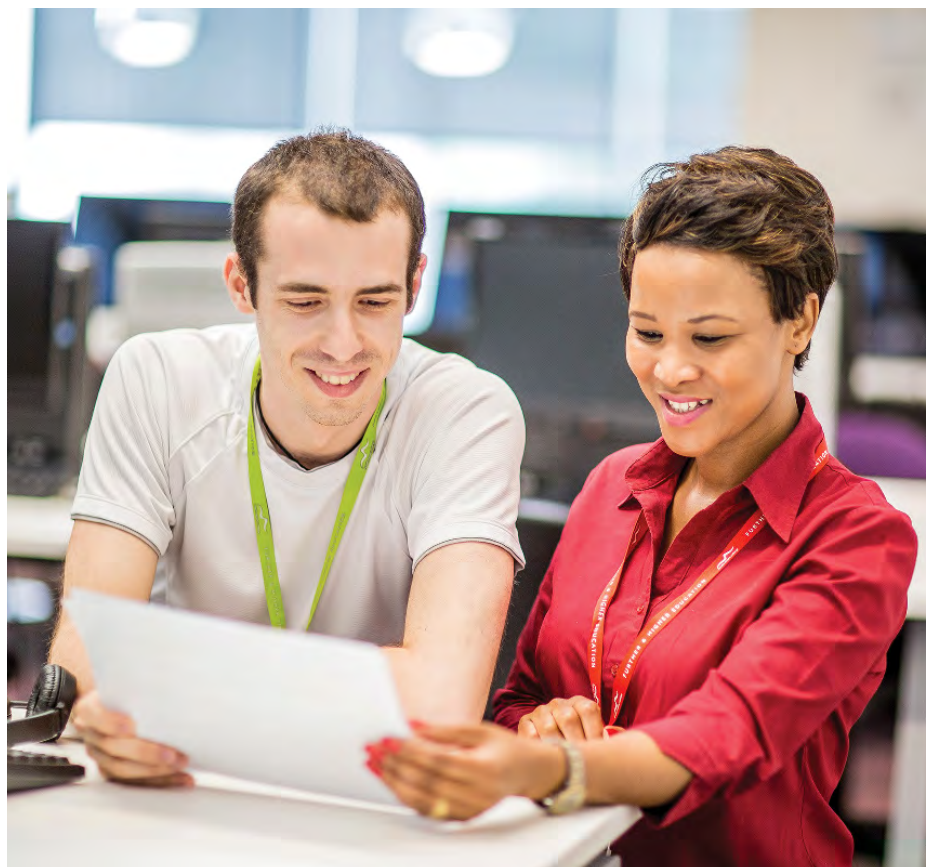
## Part-time courses

Applications for all part-time Honours Degrees and Foundation Degrees should be made directly to the University Centre using the online application form on our website

[www.southessex.ac.uk/apply-now](http://www.southessex.ac.uk/apply-now) or by submitting a paper application from the back of this prospectus.

## Applying through Clearing

If you apply for your course after the end of June, you will be entered by UCAS into Clearing. You can find further information about the Clearing process on UCAS. Any courses that are oversubscribed will not be available through Clearing.



## How is my application processed?

After you submit your application you may be invited to attend an interview to determine your suitability for the course. For further information about this process, please refer to course listings. Some vocational courses (such as Art & Design courses) will also require you to present a portfolio of work or attend an audition. Courses that may involve working with children or vulnerable adults, will require a Criminal Records Bureau check and/or an occupation health check.

For full-time course applications UCAS will send you an official notification of our decision. Part-time applicants will be notified by our Admissions department.

If your application is unsuccessful and you would like feedback, email [headmissions@southessex.ac.uk](mailto:headmissions@southessex.ac.uk).

## Applicants with disabilities or learning difficulties

We consider applications from students with disabilities using the same academic criteria as other applicants. If you have a disability, mental health difficulties or a specific learning difficulty, you should indicate this on your UCAS application. We can then give early consideration for any additional support you may require, including making reasonable adjustments to your course and environment and advice on how to apply for special exam considerations, support funding (Disabled Students' Allowance) and individual examination arrangements.



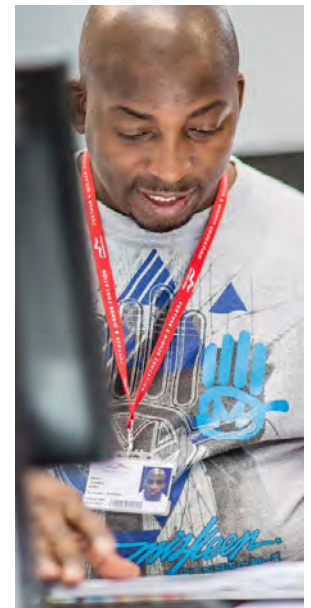
## International Students

In the first instance, international applicants should apply to UCAS. You will then receive a pre-arrival information pack which provides advice on a range of issues including funding and accommodation. In addition, you should also seek guidance from the UK Council for International Student Affairs prior to your arrival in the UK as they can provide invaluable advice and support for international applicants considering studying in the UK.

## Conditional offers

If your offer is conditional on examination results and your results do not quite meet the conditions, we will review your application to see if you can still be given a place. Please send copies of your qualification certificates to our freepost address at:

HE Admissions  
South Essex College  
Freepost SMU 110  
Luker Road  
Southend-on-Sea  
Essex  
SS1 1BR



# Fees and funding

## Useful links:

[www.ucas.com](http://www.ucas.com)  
[www.gov.uk](http://www.gov.uk)

## Fees and funding

Your main costs for higher education will be tuition fees and the cost of books and equipment, however there may also be other costs to consider such as accommodation and living costs.

With degree courses starting from £7,000 a year, our fees are well below the national average and are among the lowest in the region.

### Please note

If you already hold a higher education qualification when applying for entry to our undergraduate programmes you may not be eligible for further tuition loan funding. We strongly urge you to visit [www.gov.uk/browse/education/student-finance](http://www.gov.uk/browse/education/student-finance) or contact Student Finance England direct **0845 300 50 90**

To find out if you qualify, contact our higher education team [admissions@southessex.ac.uk](mailto:admissions@southessex.ac.uk)

For further information please visit [www.gov.uk/student-finance](http://www.gov.uk/student-finance)

## Nothing to pay up-front

You don't have to pay anything before you start your studies. Student loans are available to UK and EU students to cover tuition fees and are repayable only after you graduate and earn over £21,000 a year.

Here are some key facts about tuition fees:

- college bursaries and financial assistance maybe available to support paying for your tuition fees (for more information please visit [www.southessex.ac.uk/higher-education/fees-and-funding](http://www.southessex.ac.uk/higher-education/fees-and-funding))
- if you are a first time higher education student you can apply for a tuition fee loan to cover the cost of your course; these loans are provided by the government

## Am I eligible for a tuition fee loan?

To be eligible for a tuition fee loan you must fulfil certain criteria with regards to:

- UK/EU residency status
- the university or college you are studying at and the course you are taking
- previous higher education study (first time students)

## Does household income affect me getting a tuition fee loan?

No, tuition fee loans are not based on household income. As long as you are eligible to apply, you will receive the full tuition fee amount.

|  | Home and EU students* | Non EU international students* |
|--|-----------------------|--------------------------------|
| Standard full-time degree courses          | £7,000                | £8,000                         |
| Part-time degree courses                   | £3,500                | x                              |
| Part-time Initial Teacher Training courses | £2,250                | x                              |
| Part-time HNC courses                      | £3,000                | x                              |
| Full-time HND courses                      | £6,000                | x                              |

## How do the loan repayments work?

You will only start to repay your loan once you earn £21,000 a year. If you stop earning £21,000 for any reason, your repayments stop and will only start again when you earn more than £21,000 again.

You repay 9% of your income over £21,000. So, for example, if you earn £25,000, the 9% is only applied to £4,000 and you would pay back £7 per week or £30 per month.

If you wish, you can pay the costs of your tuition upfront.

## How long will it take me to repay my loan?

This will vary depending on how much you have borrowed, but the balance of your loan will be automatically written off after 30 years. If you require further information on any of the issues regarding finance or feel you need to discuss your finances with an adviser please contact [hesupport@southessex.ac.uk](mailto:hesupport@southessex.ac.uk) or phone **01702 220696**.

For further information on eligibility for student finance please contact [headmissions@southessex.ac.uk](mailto:headmissions@southessex.ac.uk)

\* Prices stated are per academic year

# Accommodation

## University Square, Southend

University Square offers 562 student rooms including 65 studio flats. All rooms are en-suite with eight to ten students sharing a flat with a full kitchen and dining facilities. Each room is networked with 24-hour high speed internet access provided at no extra cost. Residents can enjoy the wifi and laundry facilities.

## Who can apply for accommodation?

All students aged over 18 on full or part-time courses.

## How much does it cost?

As a guide, contracts for the academic year 2016-17 are expected to be available from £132.09\* per week for a single en-suite study room and £162.89 per week for a studio room. Payments are due once a term.



## Great reasons to stay:

- all bills, cleaning and internet included
- live with your friends; apply together as a group
- just five minutes to lectures
- close to transport networks
- convenient location just off Southend High Street
- on-site gym with discounted membership rates (additional charges apply)
- out-of-hours residents' support team of student volunteers
- 24-hour reception and security presence

## How do I apply?

Download an application form from our website. You can also contact the accommodation team on **01702 220441** or email [accommodation@southessex.ac.uk](mailto:accommodation@southessex.ac.uk)

## Read more at

[www.southessex.ac.uk/accommodation](http://www.southessex.ac.uk/accommodation)

University Square is the University of Essex's purpose-built student accommodation, right next to the Southend campus of the University of Essex and University Centre Southend.



\*These prices relate to accommodation during the 2015-16 academic year and are subject to final approval

# Entry requirements

## Read more at

[www.southessex.ac.uk/higher-education/entry-requirements](http://www.southessex.ac.uk/higher-education/entry-requirements)

## Entry requirements

Entry requirements for specific courses are explained with the course details in this prospectus and are available on the website on the individual course listing pages at [www.southessex.ac.uk](http://www.southessex.ac.uk).

All applicants will be expected to possess:

- GCSE English Language grade C or above or equivalent such as functional skills or learndirect (all programmes of study)
- GCSE Maths grade C or above or equivalent such as functional skills or learndirect (selected programmes of study)

If you would like to discuss your eligibility before submitting a formal application, please contact our admissions team in the first instance on **0845 52 12345** or email them at [headmissions@southessex.ac.uk](mailto:headmissions@southessex.ac.uk) They will arrange for a tutor from the relevant course to contact you to discuss your individual situation before you formally apply.

## Mature applicants

UCAS provides useful tailored information about university study at [www.ucas.com/students/wheretostart/maturestudents](http://www.ucas.com/students/wheretostart/maturestudents)

If you have already started a higher education course at another college or university and wish to transfer, we are happy to consider your application on the basis of qualifications obtained elsewhere. The College works within the guidelines of the structures of the European Credit Transfer System (ECTS).

Please contact

[headmissions@southessex.ac.uk](mailto:headmissions@southessex.ac.uk) in the first instance to discuss further before making an application.

## Access to Higher Education Diplomas

The College offers Access courses for mature students who have the potential to study for a degree but do not have the relevant entry qualifications. This one year qualification will help you develop the knowledge, skills and confidence needed for degree level study even if you've been out of education for a long time. Access Diplomas are recognised across the UK and Access students are often high achievers who progress to exciting new careers.

We offer Access to Higher Education Diplomas in art and design, business, health professions, social studies, media, music, science, counselling and teaching.

The College offers Access courses for mature students



# Frequently asked questions about the admission process

## What does the College feel about vocational courses?

Most of our courses have a strong vocational element and applications from students taking certain vocational qualifications are welcomed. Students who have a mixed portfolio of qualifications (BTEC National Award/Certificate and A-levels) are also welcomed.

## Does the College use unit grades in the admission process?

We do not use unit grades as standard procedure; however unit grade information may be used on receipt of examination results for individual applicants who do not meet the conditions of their offer.

## Will the College accept A-level General Studies and A-level Critical Thinking?

Yes. All of our departments accept either A-level General Studies or A-level Critical Thinking, as these awards require you to demonstrate a range of skills and knowledge.

## Is it necessary to have maths/English qualifications to enter a degree course?

Yes, this is an essential entry criterion in addition to any Level 3 requirements

## What qualifications do I need if English is not my first language?

The following standards are required:

- IELTS (Academic Version)
  - 6.0 (for first year entry onto undergraduate programmes)
  - 6.5 (for direct entry onto the second year of undergraduate programmes)
- TOEFL (paper-based test)
  - 540, 76 on IBT for first year entry to all courses

The College can accept other tests including:

- Cambridge English: Advanced (CAE) – Overall Cambridge English Scale score of 169. No less than 162 in each skill
- Test in English for Educational Purposes (TEEP) - 3
- GCE O-level or GCSE English Language or Use of English - Grade C
- Hong Kong Certificate of English Education - 3
- International Baccalaureate English B Syllabus (Standard Level) – 4

For information please visit

[www.southessex/highereducation/entryrequirements](http://www.southessex/highereducation/entryrequirements)

## Will any courses require me to sit additional aptitude tests?

We will not ask you to take any of the existing aptitude tests (eg LNAT, BMAT) as a pre-requisite for admission. We believe that the existing system for assessing applicants provides enough information to make informed decisions.

## Does the College accept the Extended Project?

If your results fall short of the offer level by a small margin, for example one A-level grade, your Extended Project result will be taken into account by the academic admissions tutor.

## What else will be taken into account when making offers?

- GCSE performance, including possession of prerequisites (e.g. maths and/or English at grade C)
- AS-levels, including subject mix and declared results
- A-level or equivalent qualifications, including subject mix, need for prerequisites, and predicted grades
- good personal statement, expressing clear motivation to study the subject and demonstrating academic skills such as critical thinking, analytical skills and problem-solving skills, as well as good communication skills
- enrichment and extra-curricular activity, including work experience, qualifications (e.g. Duke of Edinburgh, Young Enterprise), positions of responsibility held, evidence of non-academic achievements and engagement in relevant cultural and social activities, which would be indicated in your personal statement
- reference from school or college
- interview/audition performance (if required)
- portfolio evidence (if required)
- any relevant mitigating circumstances which have a bearing upon your application

# International students

## Read more at

[www.southessex.ac.uk/entry](http://www.southessex.ac.uk/entry)

## International Students

If English isn't your first language, you will need to show that you have a recognised English language qualification. Entry requirements for international students can be found on our website at [www.southessex.ac.uk/entry](http://www.southessex.ac.uk/entry). Please note if you require UK Border Agency Sponsorship, English language criteria is detailed at [www.ukba.homeoffice.gov.uk](http://www.ukba.homeoffice.gov.uk)

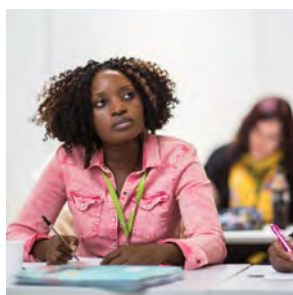
If you would like to discuss your eligibility before submitting a formal application, please contact our admissions team on **0845 52 12345** or via email at [headmissions@southessex.ac.uk](mailto:headmissions@southessex.ac.uk)

## Visas and immigration

Please see the UKCISA website and the British Council website, both organisations produce useful information and guidance that will assist you in applying for a visa and help prepare you for life in the UK.

## For overseas students already in the UK

As a prospective student you will only qualify for a 'General Student' visa when you are studying full-time in the UK. For further information please refer to the UK Border Agency website.



# Supporting your success

## Supporting your success

---

Our aim is to support you from application through to your graduation ceremony with the highest quality information, advice and guidance. Our student services team has been assessed for, and attained, the highest quality standards.

## Careers advice and guidance

---

Our careers service will provide you with all the advice and resources you need to research your chosen career and to enhance your employment prospects in today's competitive graduate job market. You will have access to advice and guidance on career choice and planning, progression to further study and employer information throughout your time with us. One-to-one impartial guidance is available by appointment and advisers can be found in student services.

Our careers advisers have access to a wealth of information on graduate careers and occupational information written by the Association of Graduate Careers Advisory Services. Free magazines and employer directories are also available. You can also access online careers information and e-based guidance (e.g. Prospects Planner test) and discuss outcomes with a careers adviser.

## Financial advice

---

Our advisers can discuss money matters with you and inform you of the financial support you may be eligible for from both Student Finance England and the College. They will support you with any applications and can help you to understand your budget whilst you study. For more information on financial support see page 76 or visit

[www.southessex.ac.uk/higher-education/fees-and-funding](http://www.southessex.ac.uk/higher-education/fees-and-funding)

## Extra support while studying

---

Trained counsellors are available to provide confidential support and advice. They can also provide contact details for specialist support groups and organisations. Our chaplain supports staff and students from all faiths and religious groups.

## Students with disabilities

---

Our disability adviser will be able to provide you with advice and support about studying with us if you have a disability or long term health condition that is likely to have an impact on your studies. You can access confidential, ongoing guidance relating to your individual needs, which may include a specific learning difficulty, a physical or sensory impairment, Autistic Spectrum Disorder, or mental health difficulty.

Our experienced adviser facilitates support for students with a variety of disabilities, recognising that individuals may have very different needs. If you have a formal diagnosis and are a home student, additional support may be available to you in the form of Disabled Students' Allowance (DSA). We can assist you with your application for DSA and help you arrange a DSA Needs Assessment.

Please see Page 76 for further details on this type of financial support or visit

[www.southessex.ac.uk/higher-education/fees-and-funding](http://www.southessex.ac.uk/higher-education/fees-and-funding)

## More Information

---

For more information about the type of support and facilities available to students with particular learning difficulties or disabilities, please make contact with us as early as possible so that we can discuss your needs.

Call student services on **0845 52 12345**, email [hesupport@southessex.ac.uk](mailto:hesupport@southessex.ac.uk) or visit our website at [www.southessex.ac.uk/he-student-services](http://www.southessex.ac.uk/he-student-services)

For further information please visit [www.gov.uk/disabled-students-allowances-dsas/overview](http://www.gov.uk/disabled-students-allowances-dsas/overview)

Our experienced adviser facilitates support for students with a variety of disabilities





# Student Union



Student Union

When you enrol you automatically become a member of the Student Union.

The Student Union is run by students who are democratically elected by their peers to ensure that the voice of the student body exists and is heard. Your Student Union is there solely to improve the student experience both academically and socially.

## What We Do

The Student Union attend regular meetings with the Senior Leadership Team, HE staff and HE students to discuss your issues, comments and ideas. We are involved in negotiating with outside organisations to get better deals for students and we contribute to, and run, social events such as the College's Fresher's Fair, comedy & quiz nights, and career fairs in partnership with Reed NCFE. Your Union provides and encourages the setting up of societies such as our LGBT group or our Equality and Diversity group to support and enrich student employability skills outside of the classroom.

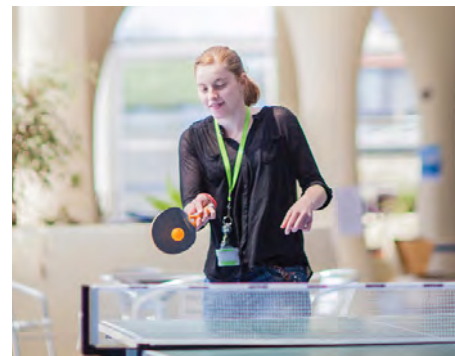
## Get Involved

You can help your Union by becoming a Student Union Officer, running for election to become a course representative or simply just feeding back information about your experiences and expectations.

To find out more, like us on Facebook  
[www.facebook.com/secsu](http://www.facebook.com/secsu)

visit our website  
[www.secsu.org](http://www.secsu.org)

or email the Student Union  
[studentunion@southessex.ac.uk](mailto:studentunion@southessex.ac.uk)



# University of Essex

## University of Essex

---

As one of the top 2% of world universities, and ranked in the top 20 in the UK for research, the University of Essex is proud to have provided excellence in education for over 50 years.

This supportive and welcoming community is home to some of the happiest students around – Essex was voted top 10 in the UK for student satisfaction for two years in a row and with over 12,000 students from more than 130 different countries, it's one of the most internationally

Ranked in the top two percent of world universities

diverse universities on the planet.

Academic departments span the faculties of Humanities, Science & Health, and Social Sciences, which bring together world

leading departments, schools, centres and institutes across three vibrant campuses in Colchester, Loughton and Southend.

## Southend Campus

---

The University's Southend Campus is located in the heart of Southend-on-Sea, adjacent to South Essex College and offers specialist resources and state-of-the-art facilities for students registered with the University of Essex, including Clifftown Theatre & Studios and The Gateway Building, which also houses a GP and dental practice, multi-faith chaplaincy and The Union, the Southend Campus venue for the University of Essex Students' Union (SU).

## The Forum

---

The Forum is a landmark civic educational facility. It houses the University's Learning Hub, which is open 24/7 and provides innovative IT and study spaces, from quiet reading areas to technology-driven group working pods.

In addition, it is home to the SU office and a student services hub, which provides a single point of contact for student support, finance and registry. The Forum also provides an integrated public and academic library, the first of its kind in the UK and an excellent learning resource.

## University Square

---

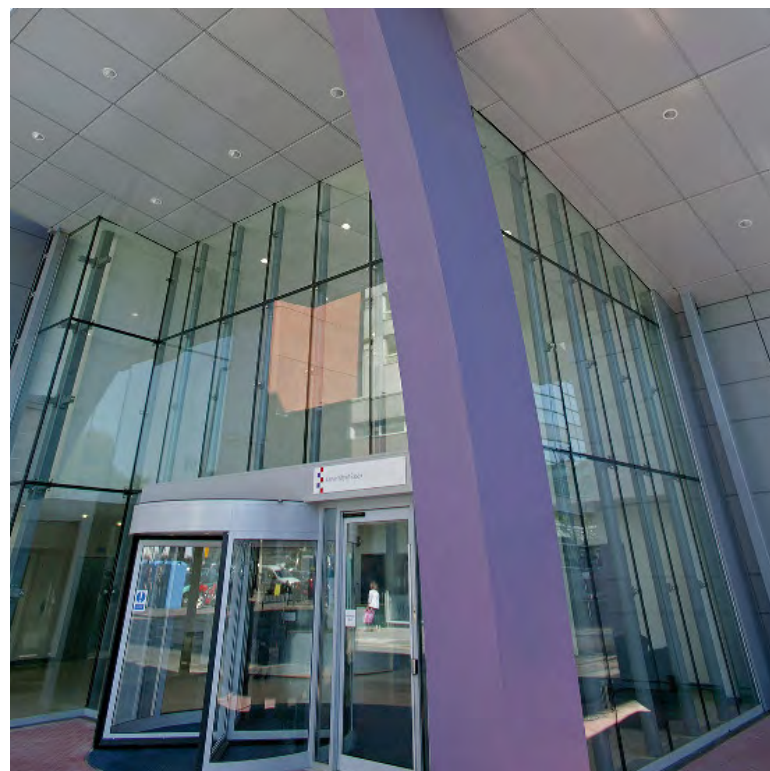
University Square, the University's high quality student accommodation complex, has become an iconic building in Southend town centre since it opened in 2010. Conveniently located just off the High Street and only a two minute walk from the Southend Campus, it is also home to the state-of-the art Evolve gym and fitness studio.

## More information

---

01206 873666  
admit@essex.ac.uk

For more information about the University of Essex, its campuses and the wide range of courses on offer, please visit [www.essex.ac.uk](http://www.essex.ac.uk) or contact the Undergraduate Admissions Office to request a prospectus.

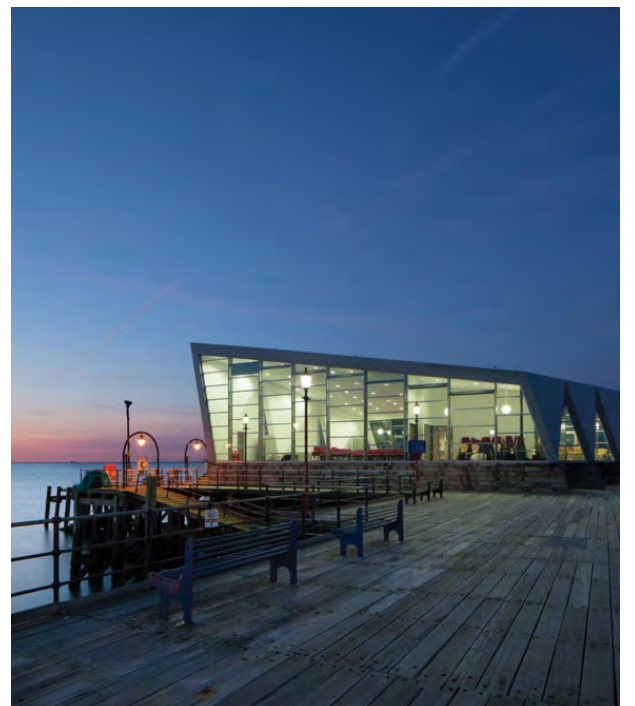






Photos courtesy of Southend-on-Sea Borough Council





Photos courtesy of Southend-on-Sea Borough Council

# Higher Education Open Events

Open Events

Read more at

[www.southessex.ac.uk/opencvents](http://www.southessex.ac.uk/opencvents)

**The Forum Southend**  
Southend-on-Sea SS1 1NE

**11am – 1pm**

Saturday 10 October 2015

Saturday 5 December 2015

Saturday 23 April 2016

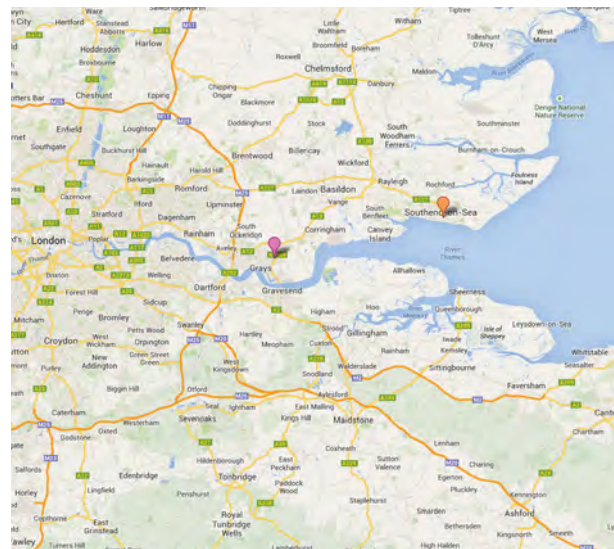
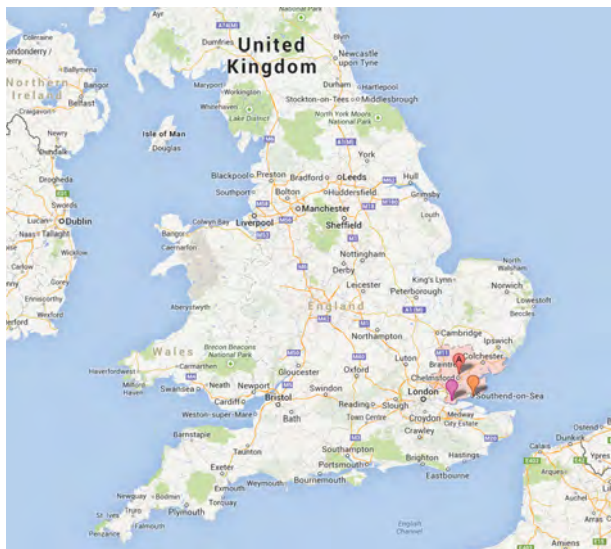
**Thurrock Campus**  
High Street RM17 6TF

**5pm – 8pm**

Thursday 15 October 2015

Thursday 14 January 2016

Wednesday 18 May 2016



google maps

 South Essex     Thurrock Campus     Southend Campus & The Forum Southend-on-Sea

## Alternative formats

This prospectus can be made available in large print, audio and Braille formats upon request.

Please contact student services at the College for further information.

## Disclaimer

The information in this document is believed to be accurate at the time of publication, however, changes may be made at a later date. The courses offered by South Essex College are under constant review and development, so students and their representatives should always contact the College directly for the most up-to-date information or visit our website

[www.southessex.ac.uk](http://www.southessex.ac.uk)

## Credits

**Produced by**  
Karen Rachdi  
**Designed by**  
Andy Havard and Richard Harwood  
**Photography by**  
Paul Tait and Stephen Watts  
**Printed by**  
London Book Printing a division of the MJ Group  
[www.londonbookprinting.co.uk](http://www.londonbookprinting.co.uk)

# Application form HE part-time courses only

This form can also be completed online at [www.southessex.ac.uk/apply](http://www.southessex.ac.uk/apply)

- Please tick this box if you are a current student at South Essex College.
- Please tick this box if you would like to speak to someone from the College about any queries you have regarding your course choice, finances, careers advice or any other queries or concerns.

## Important reminders

- You don't need your grades to apply, so you can send your application in as soon as you like. You should also, where possible, send copies of the following documents with your application: certificates, transcripts, English language certificates (if English is not your first language), English/Maths GCSE results (or equivalent). If these certificates/documents are not in English, you must provide a certified translation.
- Please do not use this form for full-time BA/BSc courses or foundation degrees (FdA). Applications for these courses should be made through the Universities and Colleges Admissions Service for the UK (UCAS) [www.ucas.com](http://www.ucas.com).

Please contact us if you need help completing this form:  
**0845 52 12345** or [learning@southessex.ac.uk](mailto:learning@southessex.ac.uk)

## Office use only

Campus:  Basildon  Southend  Thurrock  TLC

## PLEASE USE A BLACK PEN & WRITE IN BLOCK CAPITALS

How did you hear about us?

### Please tick as appropriate

- Advertising  Careers Service  Friends/family  
 Internet  Job Centre  Library  
 Supermarket (which one?)  School

Other (please specify):

## SECTION 1: Personal Details

Surname

Forename

Telephone

Mobile

Email

Address

Postcode

Date of birth   Male  Female

National Insurance No.

### Emergency contact information & address

Next of kin

Relationship

Telephone (day)

Telephone (eve)

Address of emergency contact

Postcode

## SECTION 2: Residency (to be completed by all applicants)

South Essex College will need evidence of status to satisfy government requirements. Failure to provide evidence may result in the College being unable to process your application.

### Nationality

Please give the current name of the country where you were born:

Have you been resident in England for the last three years?

Yes  No

Are you a national of an EU country and been resident in the EU for three years or more?

Yes  No

If you have answered no to either of the above questions, what is your current immigration status and what date did you enter the UK?  
**(Evidence will need to be seen)**

Current status:

Date you entered UK:

Are you an asylum seeker?  Yes  No  N/A

Are you on a visa or is there any restriction on the length of time you can stay in the UK?  Yes  No  N/A

## SECTION 3: Criminal Convictions

Do you have any criminal convictions?  Yes  No

## SECTION 4: Your course choice

Don't worry if you are not sure about your course choice. The information you give here is intended to help us when we interview you. If you have already made a firm decision, please indicate your chosen course below, including the full title and level of the course/programme you want to study:

Course

Course code (if known)

Expected start date

Campus

If you have not made a firm course choice yet, please write down the course(s) you are considering and/or write your career aims below:



## SECTION 5: Support needs for disabilities

### EQUAL OPPORTUNITIES STATEMENT

South Essex College is committed to ensuring equality for all current and potential students irrespective of their age, disability, gender reassignment, race, religion or belief, sex and sexual orientation or special education needs. This information is confidential and will only be used to provide appropriate support for you during your time at the College.

#### Do you have any disabilities or learning difficulties?

YES  NO If unsure please tick 'YES'.

If YES, please identify from the following (tick as appropriate):

#### Disability

- ADHD  Asthma  
 Autism/Autism Spectrum Disorder  Diabetes  
 Epilepsy  Tourettes  Other

#### Learning difficulty

- Dyscalculia  Dyslexia  Dysphasia  
 Dyspraxia  Hyperlexia  Literacy/Numeracy

#### Safeguarding

- Mental health condition  
 Looked after child (local authority, foster care etc.)  
 Non-traditional entry route (home schooled/alt ed/educated abroad)  
 Under 16 (as at 31 August 2015)  
 Young carer/parent (14-18 years old)  
 With Youth Offending Team/on probation

#### Sensory impairment

- Hearing impairment  
 Visual impairment (not corrected by glasses)

Is English your first language?  Yes  No

## SECTION 6: Ethnicity

Please indicate which category best describes your ethnic origin.

- Asian or Asian British – Bangladeshi  
 Asian or Asian British – Indian  
 Asian or Asian British – Pakistani  
 Black or Black British – African  
 Black or Black British – Caribbean  
 Chinese  
 Mixed – White and Asian  
 Mixed – White and Black African  
 Mixed – White and Black Caribbean  
 Other Asian background  
 Other Black background  
 Other Ethnic background  
 Other Mixed background  
 White

What is your main spoken language (if not English)?

For further information on fees and other HE related matters, please visit [www.southessex.ac.uk/higher-education](http://www.southessex.ac.uk/higher-education)

## SECTION 7: Your education

Name of present or last institution attended

From  To

#### Qualifications & examinations

If you are still at school, complete the 'estimated grades' column for your subjects. If you have existing qualifications, please list the actual grades in the last column.

| Subjects             | Level                | Est. grades          | Actual grades        |
|----------------------|----------------------|----------------------|----------------------|
| <input type="text"/> | <input type="text"/> | <input type="text"/> | <input type="text"/> |

Please complete on a separate sheet if necessary. You will be asked to show certificates of completed qualifications at interview/enrolment or you can attach copies to this form.

## SECTION 8: Declaration

I hereby declare that all information on this form is correct and apply for admission to South Essex College of Further & Higher Education.

**DATA PROTECTION:** I give explicit consent to process the information submitted in this application under the terms of the Data Protection Act 1998.

Name

Date

Signature of applicant:

### Email or post your completed form to us

Please scan and email form to: [admissions@southessex.ac.uk](mailto:admissions@southessex.ac.uk) or post it to us at:

FREEPOST SMU110, F.A.O Admissions, South Essex College, Luker Road, Southend-on-Sea, Essex, SS1 1BR.

**(Remember, you don't need a stamp)**

We may use your details to contact you about College information, news and events. Please tick the box if you would prefer not to be contacted.